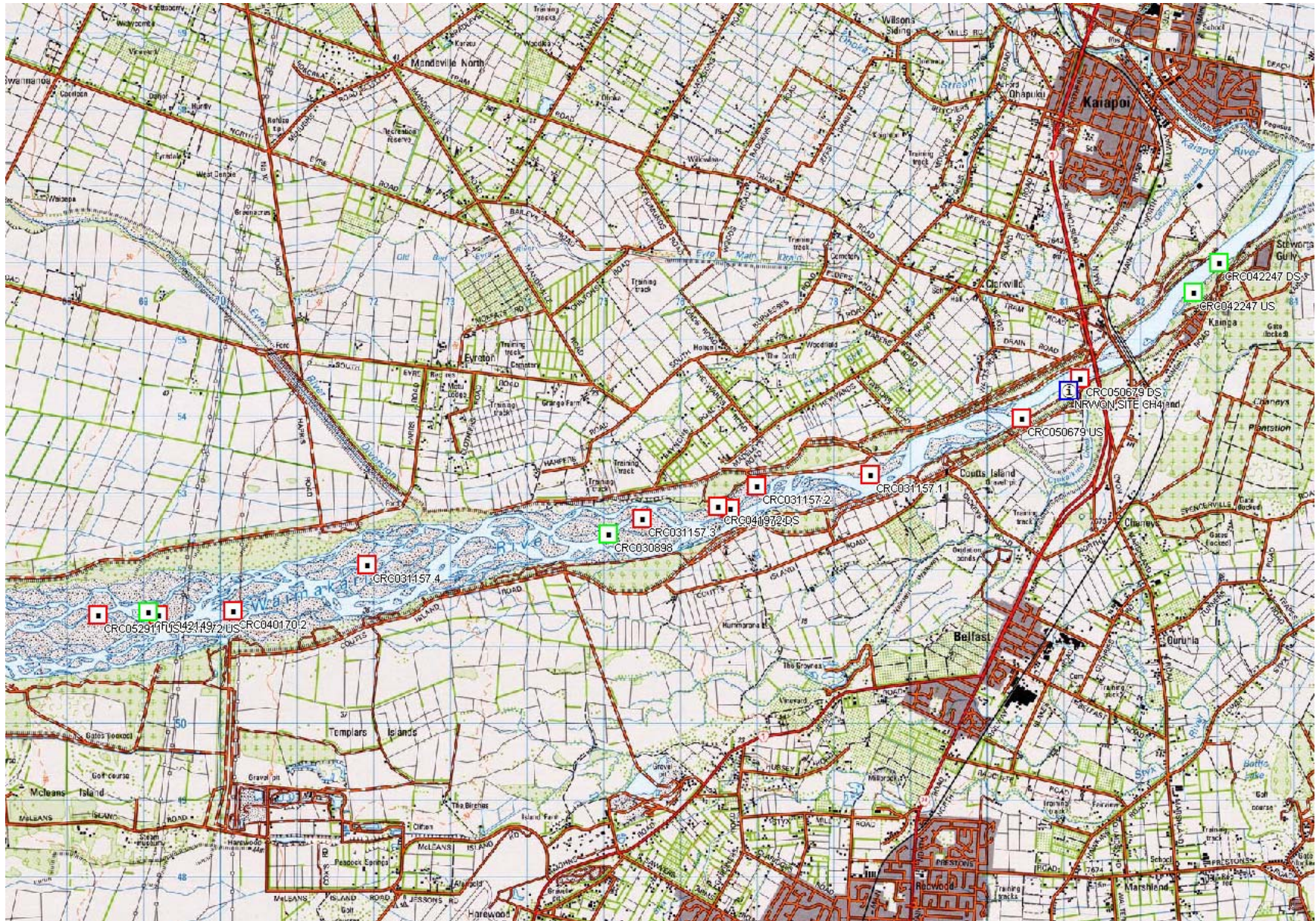


Supplementary Evidence of Paul Kennedy – Appendix 1

Location of current gravel extraction consents in lower Waimakariri River.

Data sourced from ECan online consents database (www.ecan.govt.nz), accessed 20 February 2008.



Note: NRWQN Site CH4 is shown in blue. Only one of the consents marked (CRC042149) has a clarity related condition.

Summary of existing gravel extraction consents in the lower Waimakariri River

Consent Number	Consented Volume of Gravel (m ³ /year)
CRC040170.2	20,000
CRC000851	100,000
CRC030898	20,000
CRC031157	8,000
CRC041972	200,000
CRC042149 #	100,000
CRC050679	30,000
CRC042247	50,000
CRC052911	200,000

Note: # This consent has a condition limiting the change in clarity beyond a 200 m mixing zone to less than 20% compared with 50 m above the gravel extraction site. None of the other consents listed have flow or clarity related conditions.