



# Central Plains Water Waimakariri River 2D Habitat Visualisations

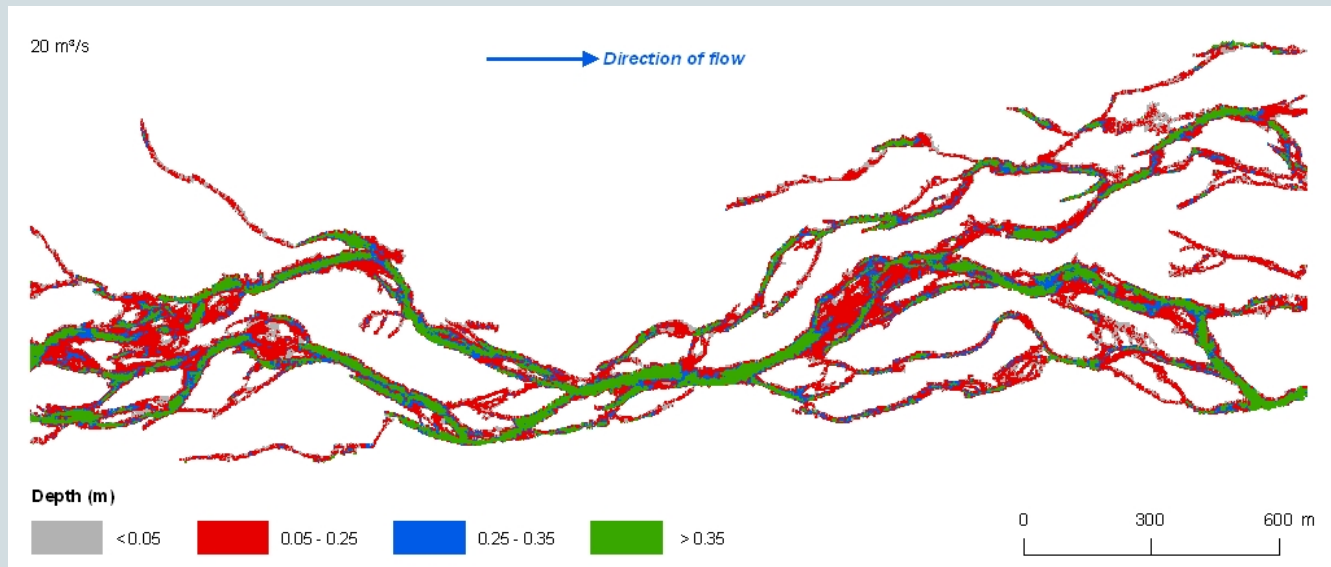
3 June 2008



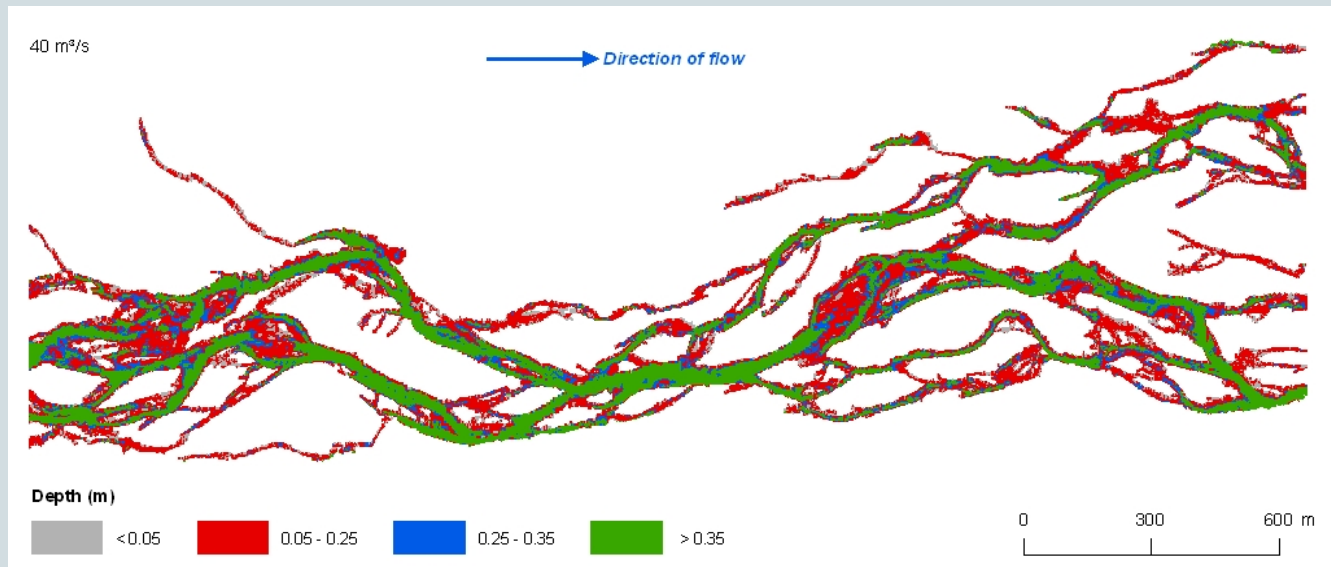
# Background

- The following slides show modelled water depths at different flows at Crossbank, a heavily braided reach of the Waimakariri River.
- The base data was supplied by NIWA on 7 January 2008. The data was derived from 2D habitat modelling, as described by Duncan (2001).
- The following plots were generated in ArcMap GIS software by Golder Associates (NZ) Ltd.

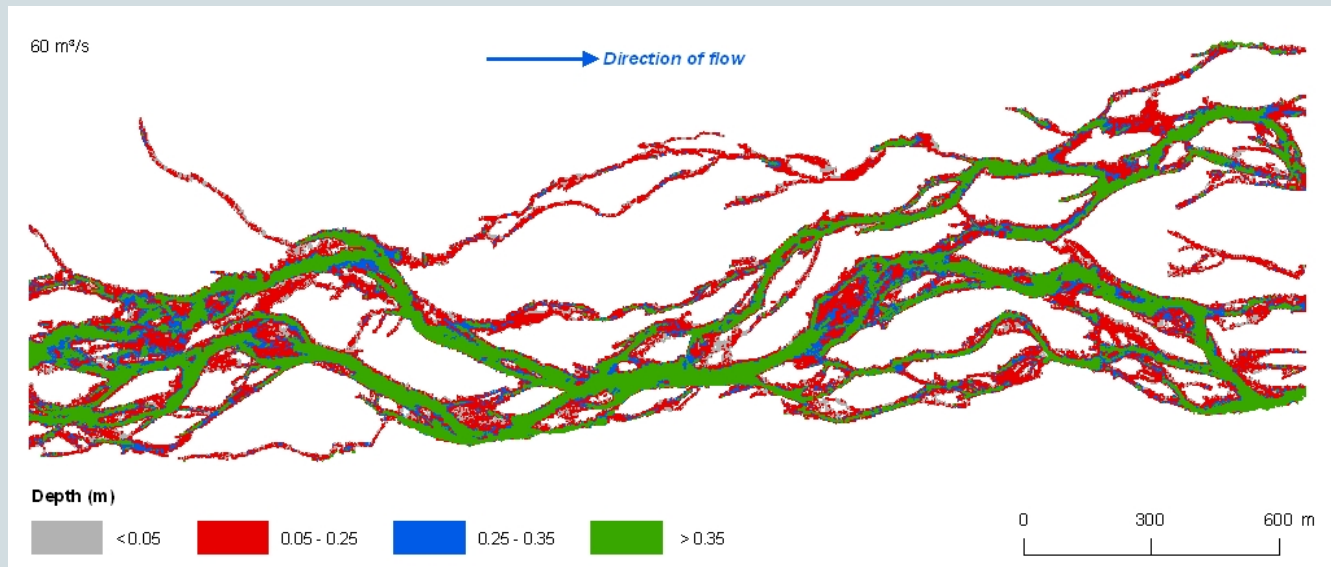
# 20 m<sup>3</sup>/s



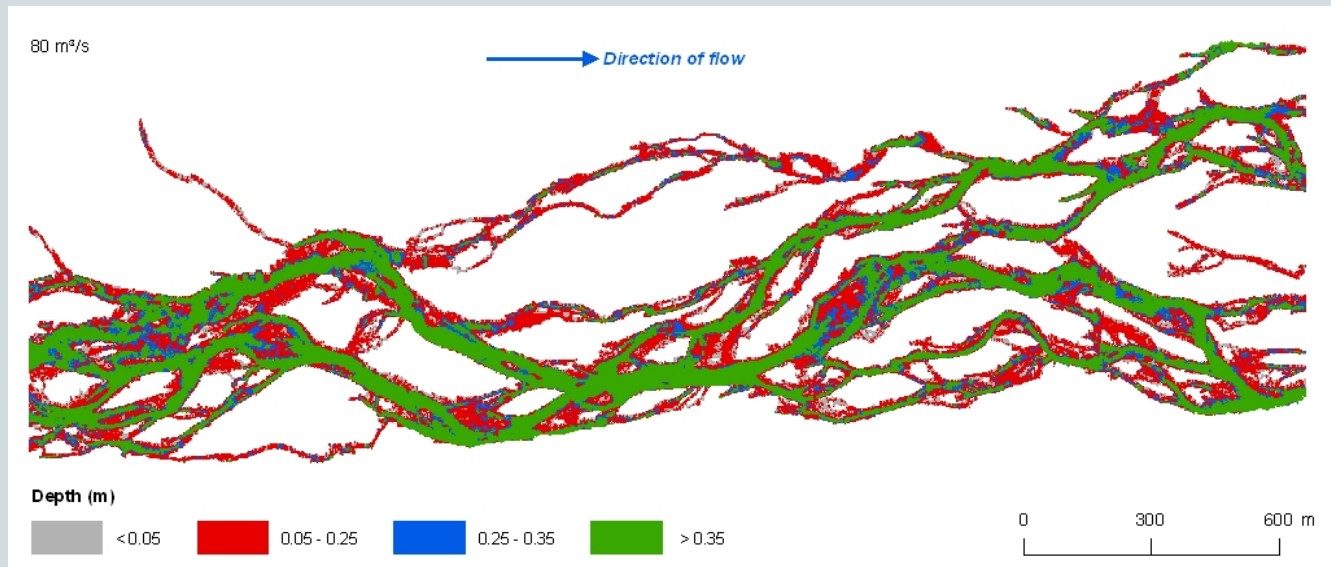
# 40 m<sup>3</sup>/s



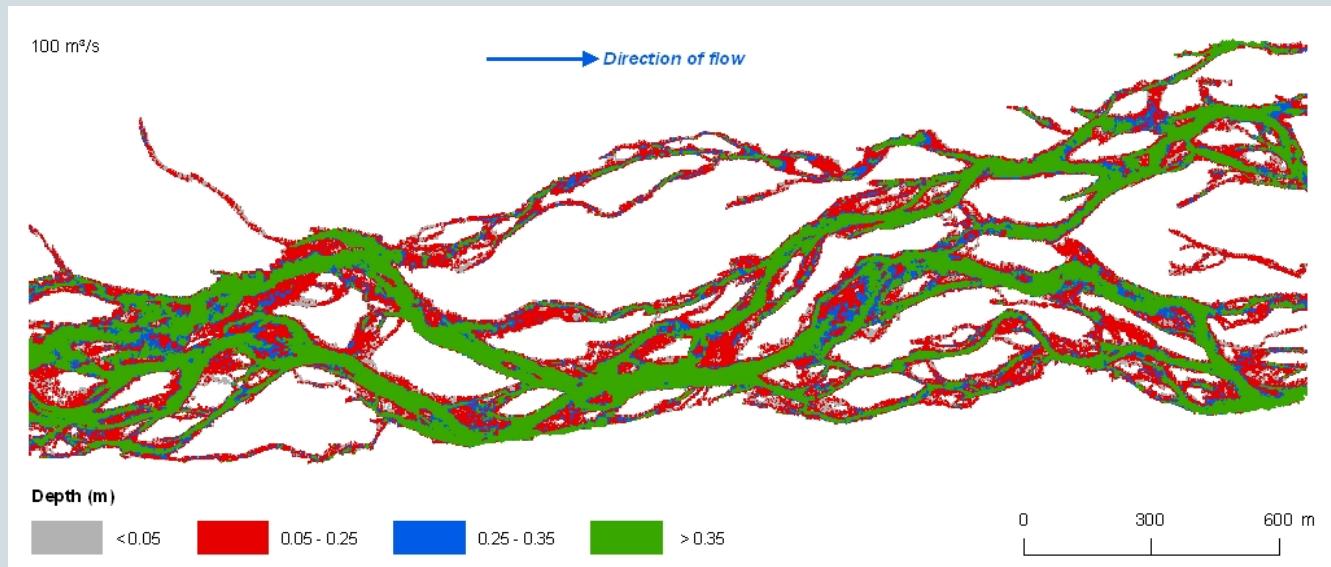
# 60 m<sup>3</sup>/s



# 80 m<sup>3</sup>/s



# 100 m<sup>3</sup>/s



# 120 m<sup>3</sup>/s

