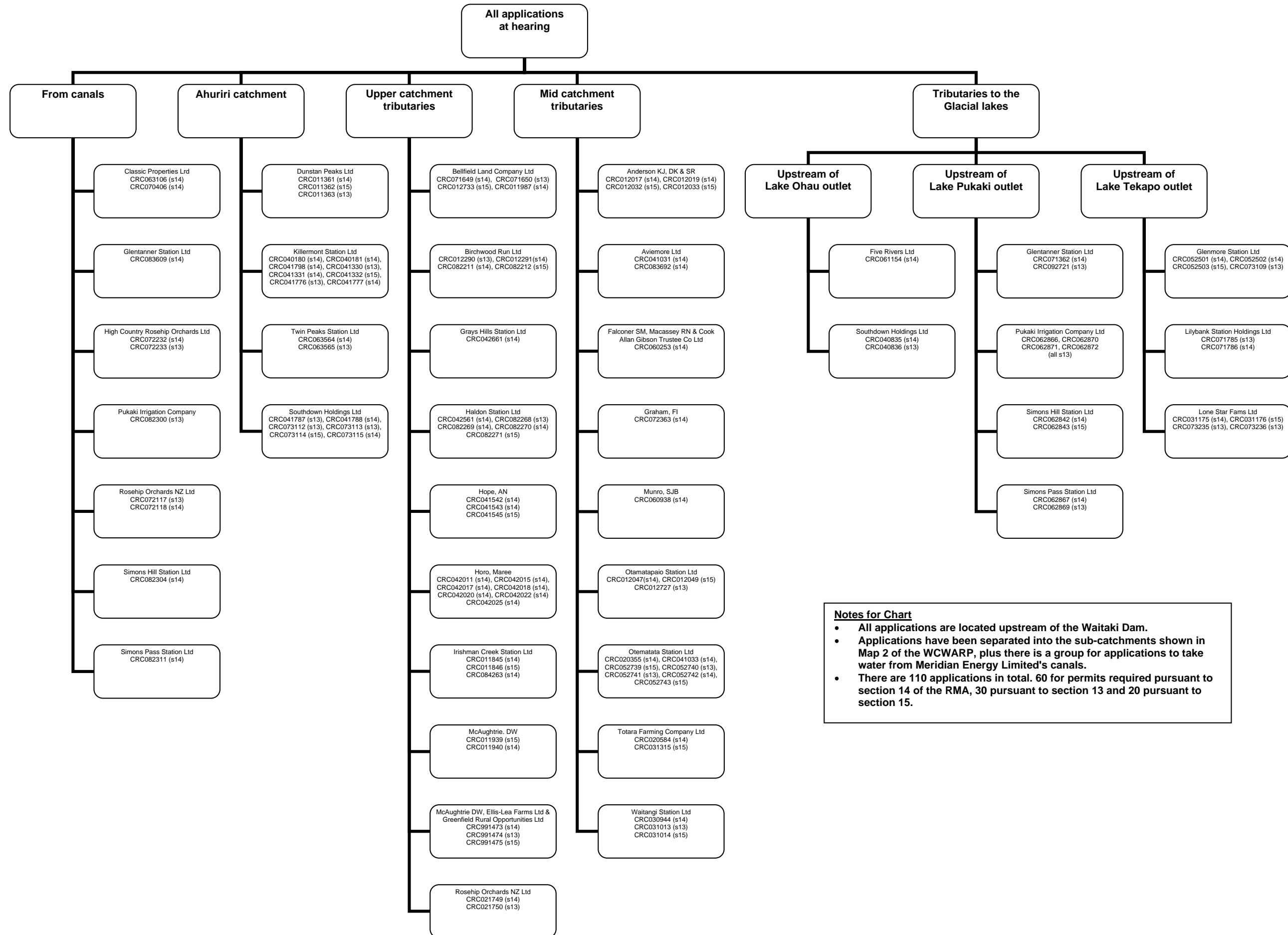


# Report 1, Appendix 1: Flow chart showing applications by sub-catchment



**Notes for Chart**

- All applications are located upstream of the Waitaki Dam.
- Applications have been separated into the sub-catchments shown in Map 2 of the WCWARP, plus there is a group for applications to take water from Meridian Energy Limited's canals.
- There are 110 applications in total. 60 for permits required pursuant to section 14 of the RMA, 30 pursuant to section 13 and 20 pursuant to section 15.