



**Ashburton Community Water Trust
Rakaia Terrace Hydro Scheme
Resource Consent Hearing**

Date: 15 September 2008



Photo 1 - Scheme Overview from Upstream Viewing Point



Photo 2 - Scheme Overview from Happy Valley Road



Photo 3 - Scheme Overview from Happy Valley Road



Photo 4 – View of canal downstream of Highbank



Photo 5 – River Intake Site



Illustration 1 - River Intake Structure (C020)

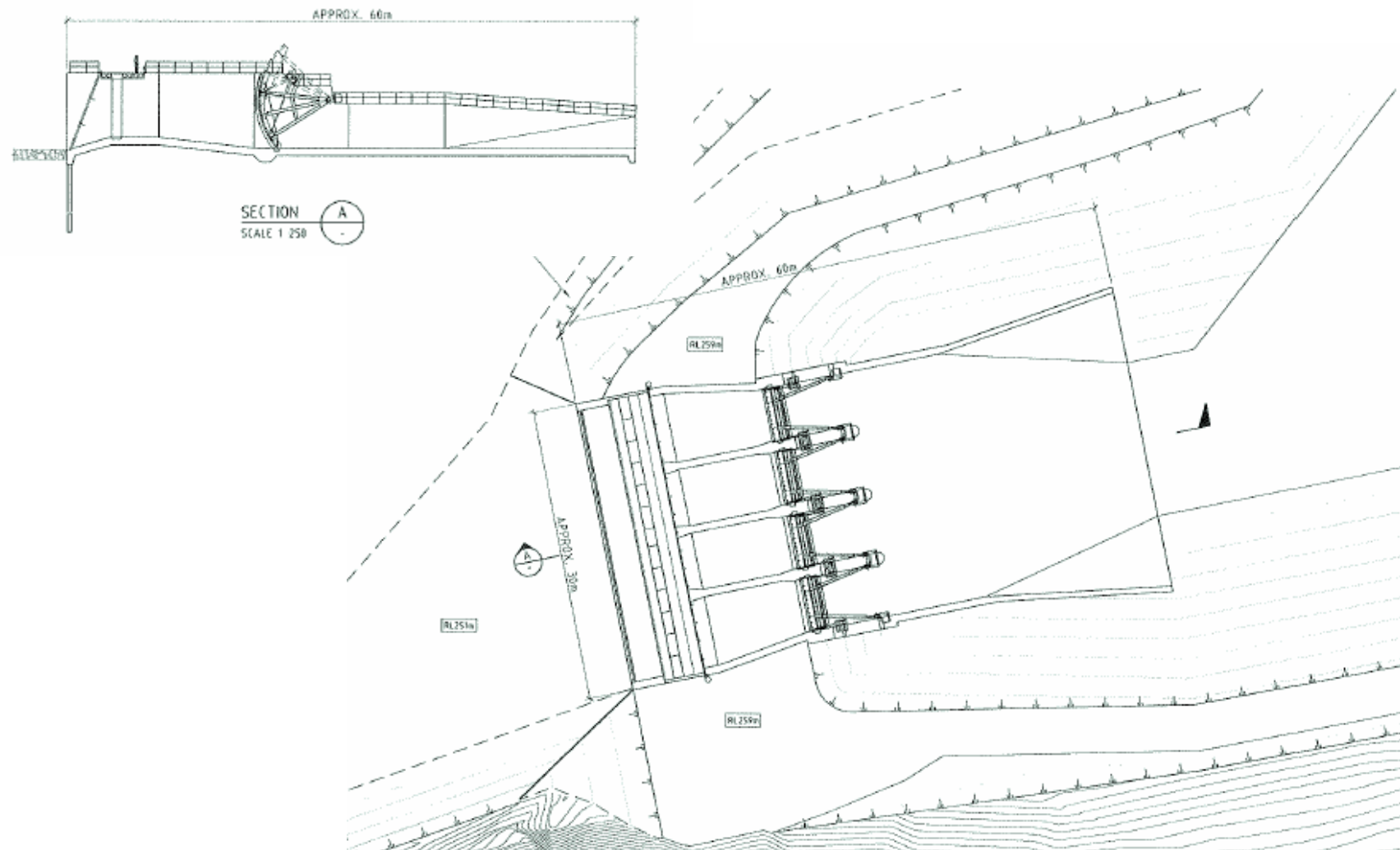


Illustration 2 – Scheme Intake Details (C011)

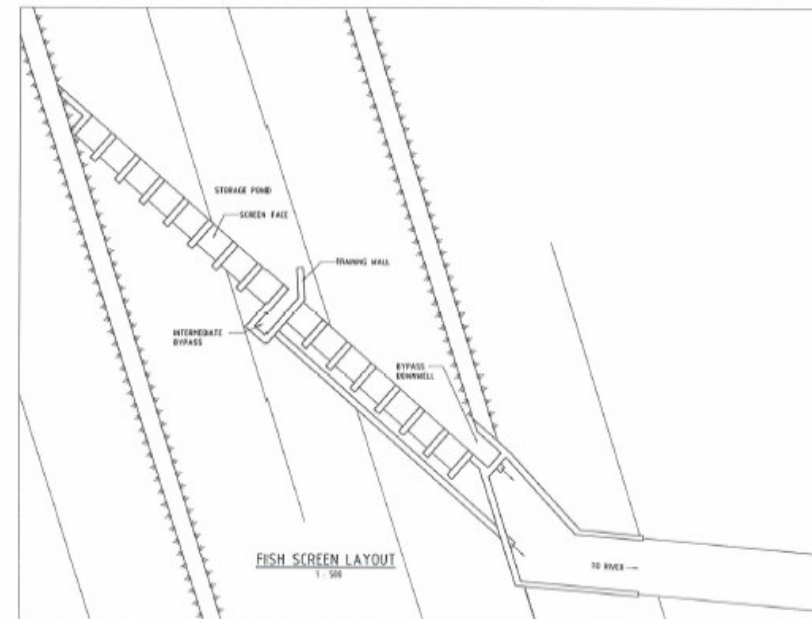
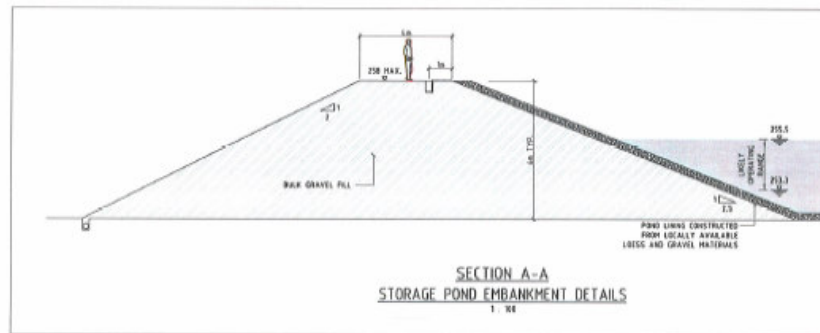


Illustration 3 – Drop Structure Generation Station (C021)

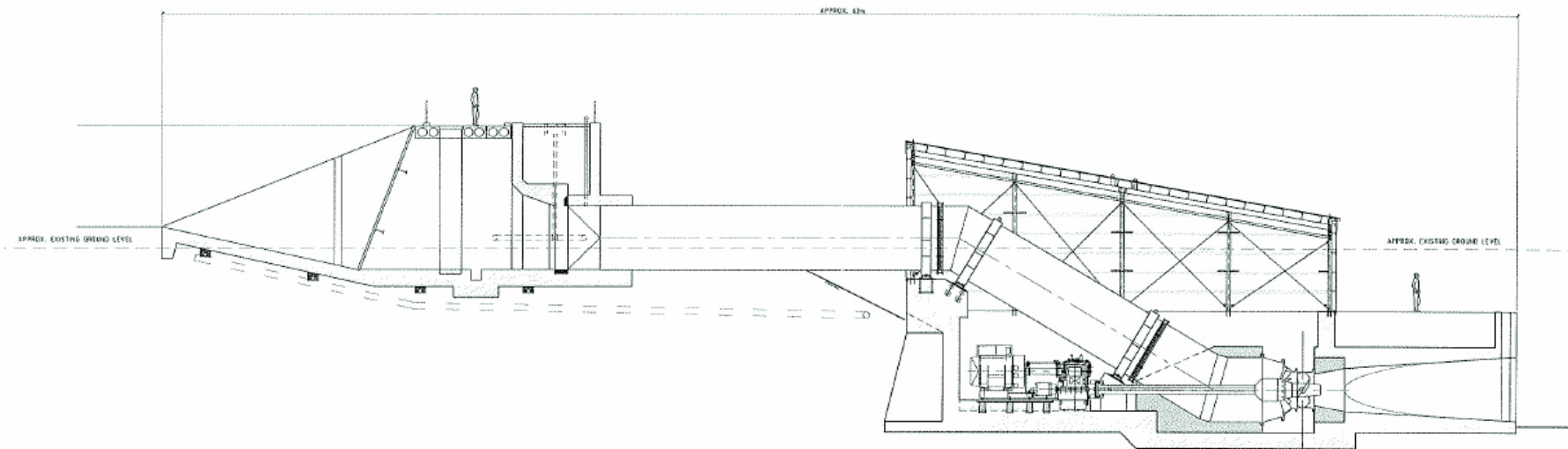


Photo 6 - View of Existing Highbank Powerhouse



Photo 7 - View of Existing “Formed Tailrace”



Photo 8 - View back along “Formed Tailrace”



Photo 9 - Existing Highbank Salmon Barrier



Photo 10 - View along “Unformed Tailrace”



Illustration 5 – Typical Canal Profiles (C010)

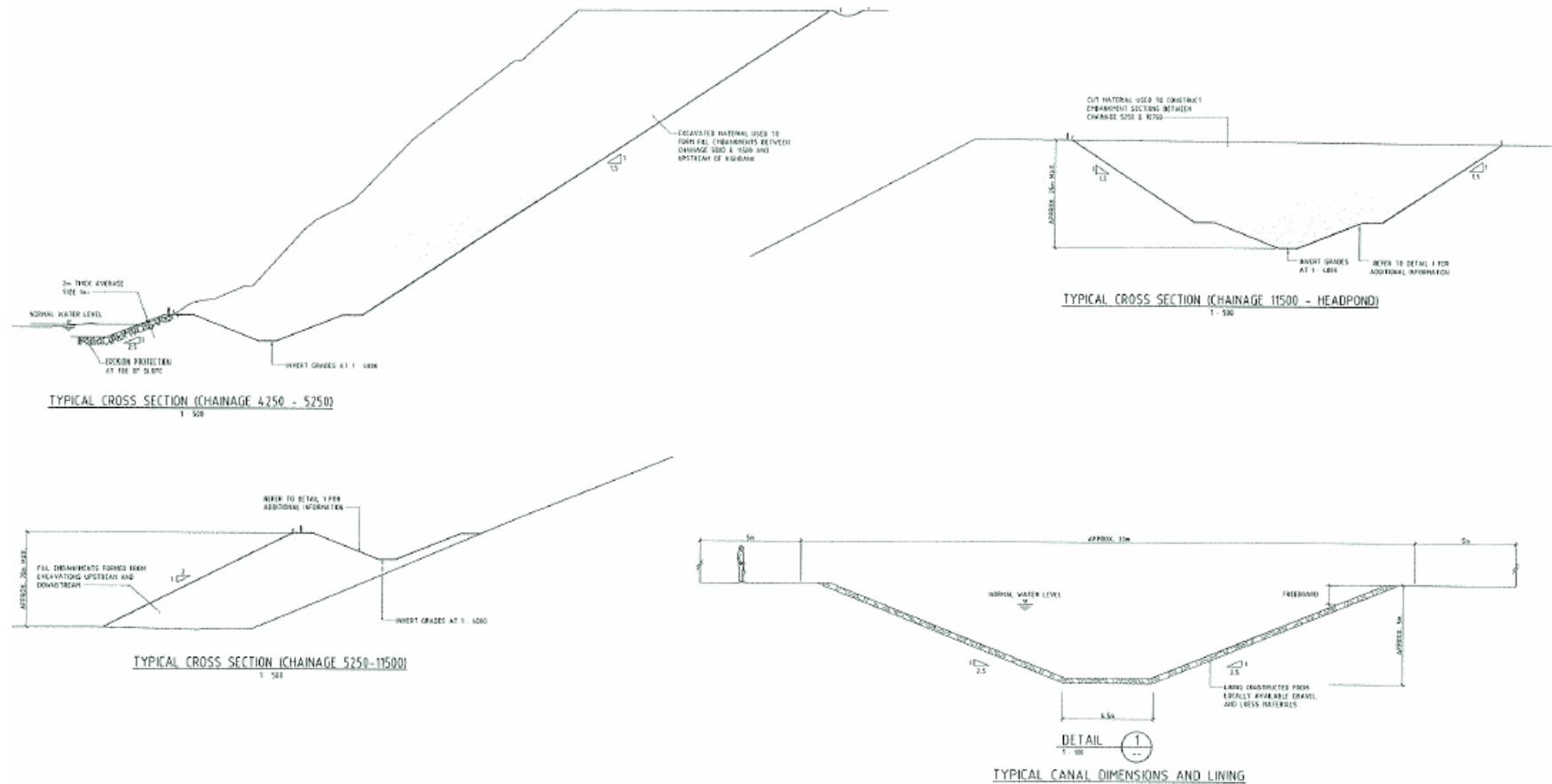


Illustration 6 – Rakaia Powerstation (C031)

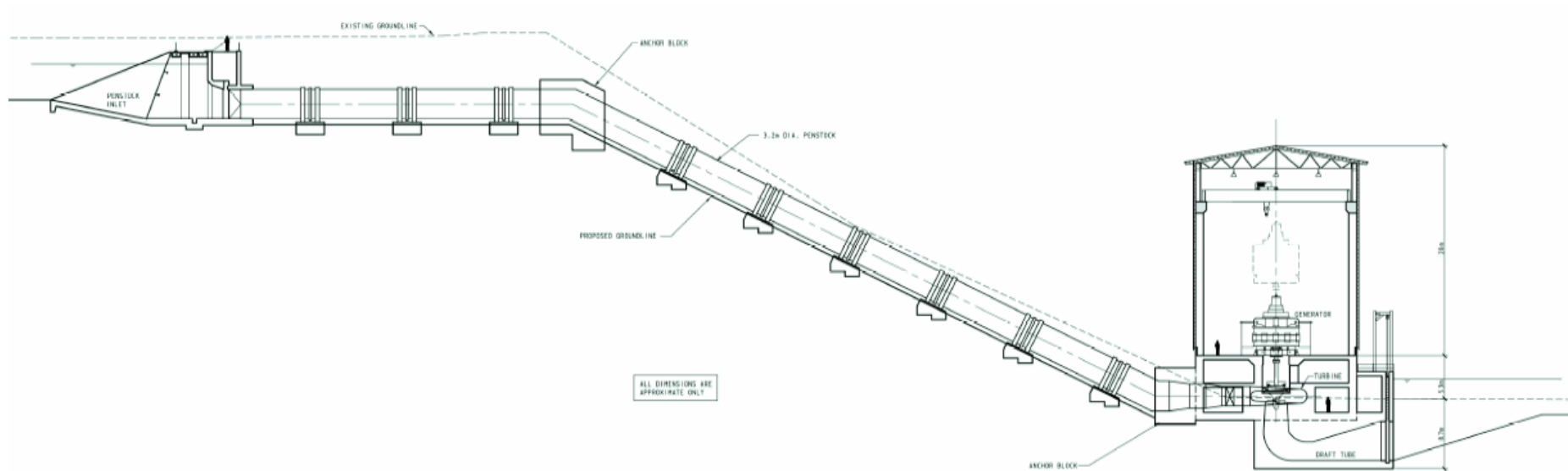


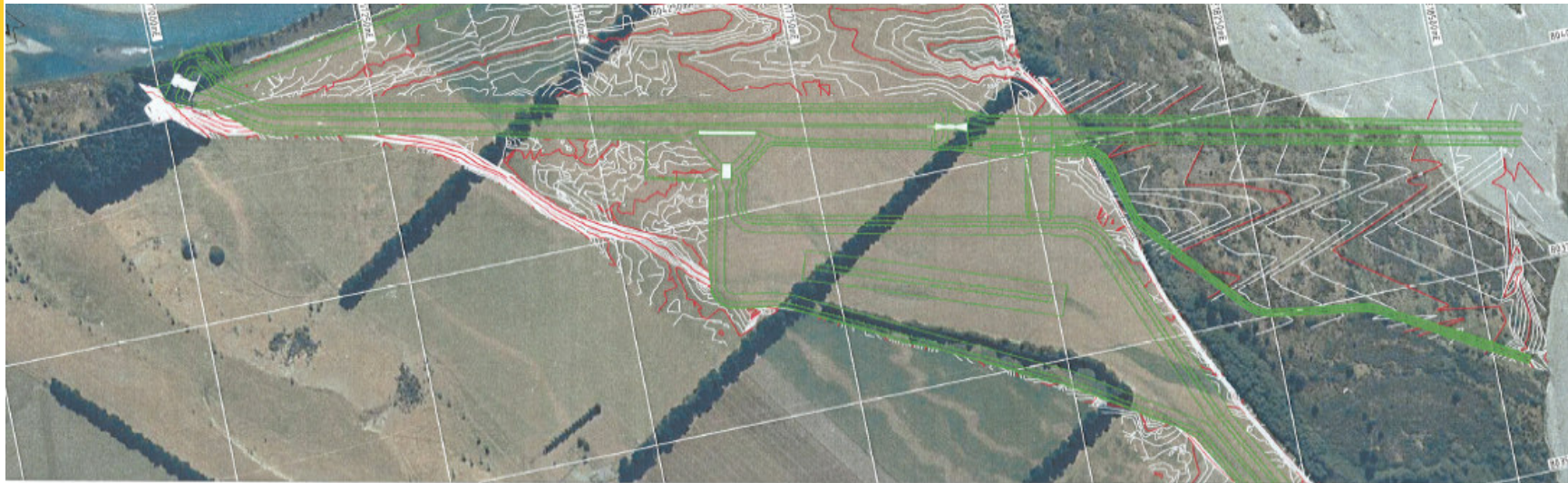
Photo 11 – View of Barrhill Powerhouse



Photo 12 – View across Barrhill tailrace site



Illustration 7 – EA/BCI Intake Concept (C006)



PLAN VIEW BCI SCHEME
SCALE 1:2500



Illustration 8 – Flooding of Sediment Disposal Area



Photo taken June 2007 at 110 m³/s approx flow

Photo taken January 1982 at 590 m³/s flow

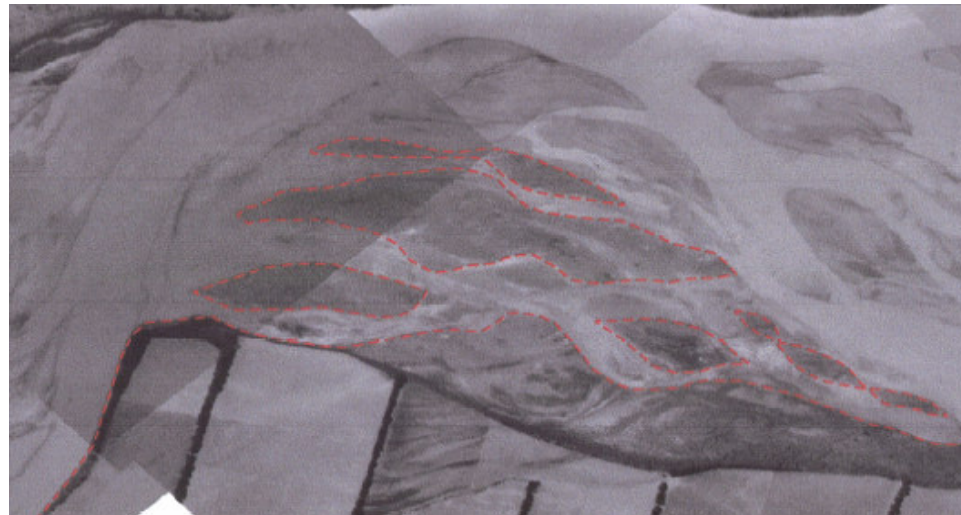


Illustration 9—Sediment Control during Construction (SD04)

