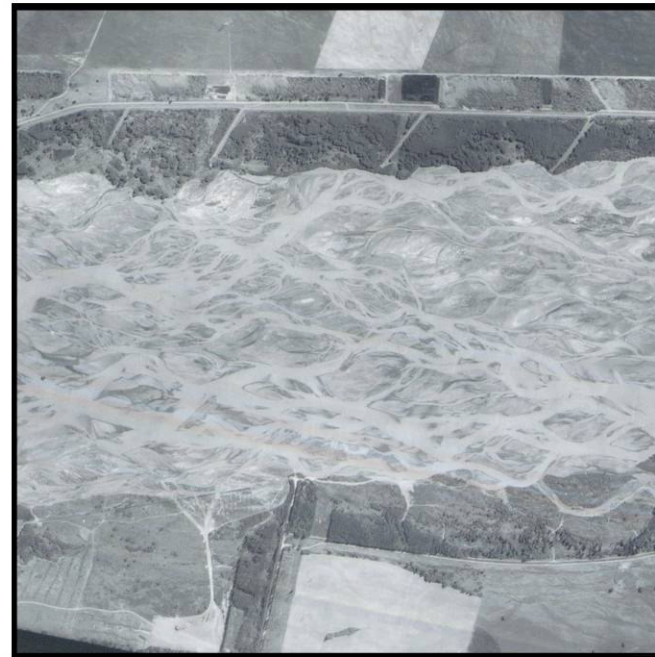


Figure 1: WAIMAKARIRI RIVER AT CROSSBANK



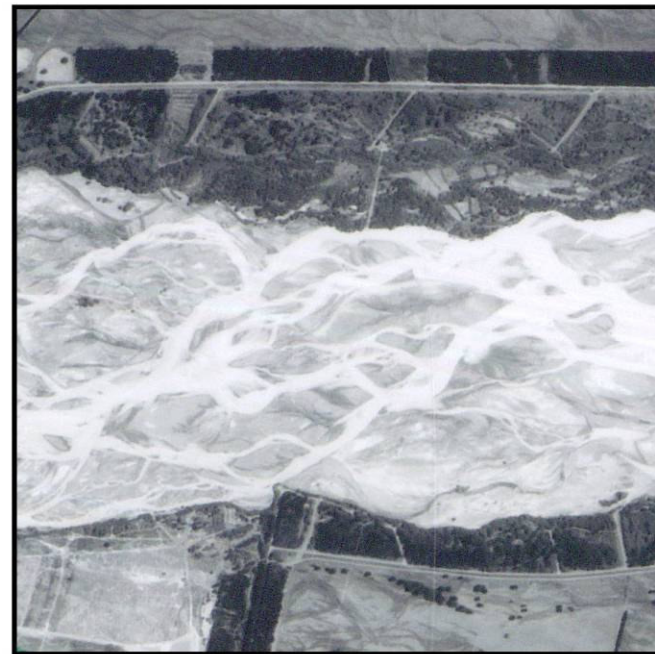
16-10-1975
228 m³/s



22-8-1979
89 m³/s



23-9-1984
75 m³/s



26-11-1994
250 m³/s



5-12-2000
95 m³/s



8-3-2001
37 m³/s

Aerial photographs cover 2 km x 2 km.

River flows left to right.

