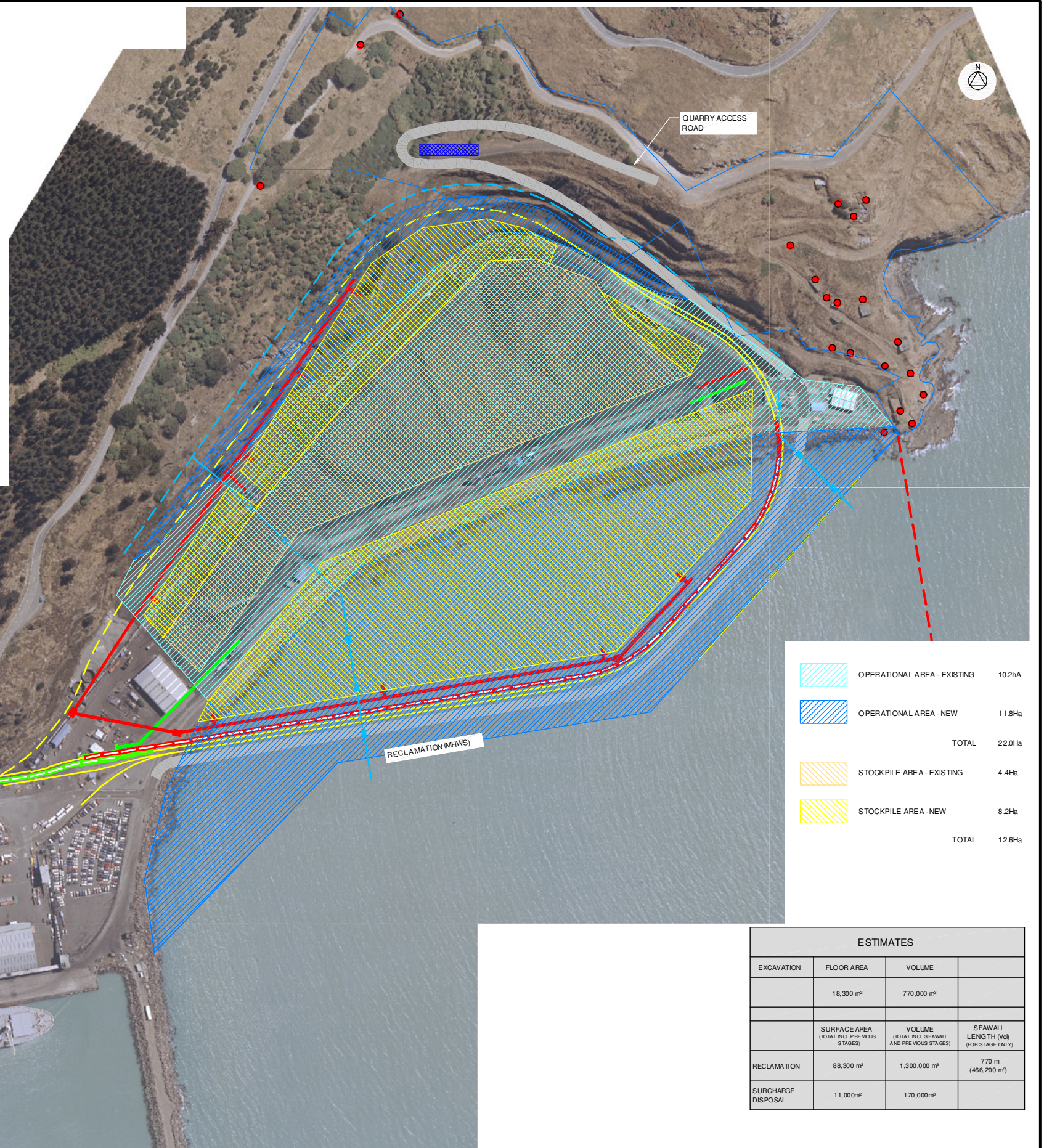


**TYPICAL SECTION THROUGH RECLAMATION
AFTER SETTLEMENT**
Scale: 1:500

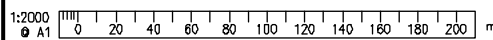


	OPERATIONAL AREA - EXISTING	10.2Ha
	OPERATIONAL AREA - NEW	11.8Ha
	TOTAL	22.0Ha
	STOCKPILE AREA - EXISTING	4.4Ha
	STOCKPILE AREA - NEW	8.2Ha
	TOTAL	12.6Ha

ESTIMATES			
EXCAVATION	FLOOR AREA	VOLUME	
	18,300 m ²	770,000 m ³	
	SURFACE AREA (TOTAL INCL. FILL VOLUMS STAGES)	VOLUME (TOTAL INCL. SEAWALL AND PREVIOUS STAGES)	SEAWALL LENGTH (Vol) (FOR STAGE ONLY)
RECLAMATION	88,300 m ²	1,300,000 m ³	770 m (466,200 m ³)
SURCHARGE DISPOSAL	11,000m ²	170,000m ³	

300 mm
200
100
50
0 10 mm
Vertical

CO-ORDINATES SHOWN IN TERMS OF MT PLEASANT GEODETIC 1949



All dimensions in metres (m) unless shown otherwise

	BY	CHECKED	DATE
DESIGN			
DRAWN	CAL		Dec 08
APPROVED	G W Chalmers		10 Dec 08
R1 Surcharge fillet shown and additional operational area updated	JAD	11 Jun 09	
AMENDMENT	APP'D	DATE	

This drawing and its contents are the property of Opus International Consultants Limited. Any unauthorised employment or reproduction, in full or in part, is forbidden.

Lpc Lyttelton Port of Christchurch

Christchurch Civil Engineering
PO Box 1482
Christchurch, New Zealand
Tel: +64 3 363 5400
Fax: +64 3 365 7858



TITLE LYTTELTON PORT OF CHRISTCHURCH COAL HANDLING FACILITY COAL YARD EXPANSION PROJECT			
CONSENTS OPERATIONAL AREAS			
STATUS PRELIMINARY	FILE DV354.11		
SCALE 1:2000 @ A1	PLOT DATE 11/06/09 @ 16:05	FEATURE IDENTIFIER 6/1194/148	CODE 5604
		SHEET 96	REVISION R1

11/06/2009 16:49

GRAPHIC SCALES

g:\pc\dv354.11 coal expansion project (options & ideas phase)\drawings\6_1194_148\5604 preliminary\6_1194_148_5604_90--.dwg - 96R1 ORIGINAL SHEET SIZE A1 [84x594]