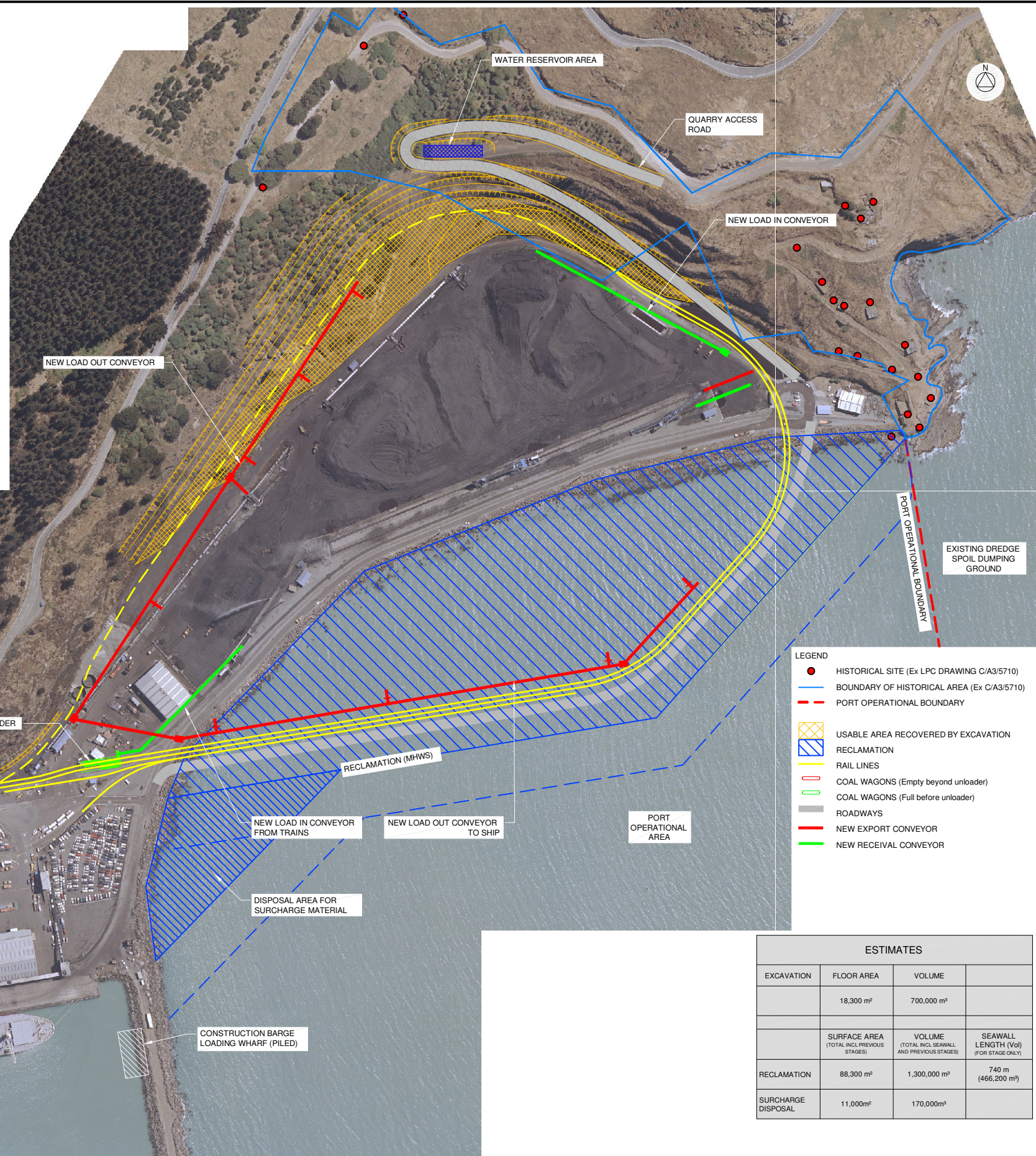


TYPICAL SECTION THROUGH RECLAMATION AFTER SETTLEMENT
Scale: 1:500

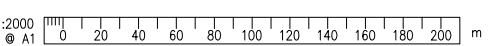


- LEGEND**
- HISTORICAL SITE (Ex LPC DRAWING C/A3/5710)
 - BOUNDARY OF HISTORICAL AREA (Ex C/A3/5710)
 - - - PORT OPERATIONAL BOUNDARY
 - ▨ USABLE AREA RECOVERED BY EXCAVATION
 - ▨ RECLAMATION
 - RAIL LINES
 - COAL WAGONS (Empty beyond unloader)
 - COAL WAGONS (Full before unloader)
 - ROADWAYS
 - NEW EXPORT CONVEYOR
 - NEW RECEIVAL CONVEYOR

ESTIMATES			
EXCAVATION	FLOOR AREA	VOLUME	
	18,300 m ²	700,000 m ³	
	SURFACE AREA (TOTAL INCL PREVIOUS STAGES)	VOLUME (TOTAL INCL SEAWALL AND PREVIOUS STAGES)	SEAWALL LENGTH (Vol) (FOR STAGE ONLY)
RECLAMATION	88,300 m ²	1,300,000 m ³	740 m (466,200 m ³)
SURCHARGE DISPOSAL	11,000m ²	170,000m ³	

300 mm
200
100
50
0 10 mm

CO-ORDINATES SHOWN IN TERMS OF MT PLEASANT GEODETIC 1949



All dimensions in metres (m) unless shown otherwise

	BY	CHECKED	DATE
DESIGN	GWC		Sep 08
DRAWN	CAL		Sep 08
APPROVED		G W Chalmers	3 Sep 08
R2	Surcharge disposal and barge wharf added	GWC	18 Feb 09
R1	Stage 3 removed. Water storage added	GWC	12 Dec 08
AMENDMENT	APP'D	DATE	

This drawing and its contents are the property of Opus International Consultants Limited. Any unauthorised employment or reproduction, in full or in part, is forbidden.

Lpc Lyttelton Port of Christchurch

Christchurch Civil Engineering
PO Box 1482
Christchurch, New Zealand
Tel: +64 3 363 5400
Fax: +64 3 365 7858

TITLE LYTTELTON PORT OF CHRISTCHURCH COAL HANDLING FACILITY COAL YARD EXPANSION PROJECT			
RECLAMATION CONSENT CONCEPT CONVEYOR LAYOUT			
STATUS	PRELIMINARY	FILE	DV354.11
SCALE	1:2000 @ A1	PLOT DATE	18/02/09 @ 16:49
FEATURE IDENTIFIER	6/1194/148	CODE	5604
SHEET	95	REVISION	R2