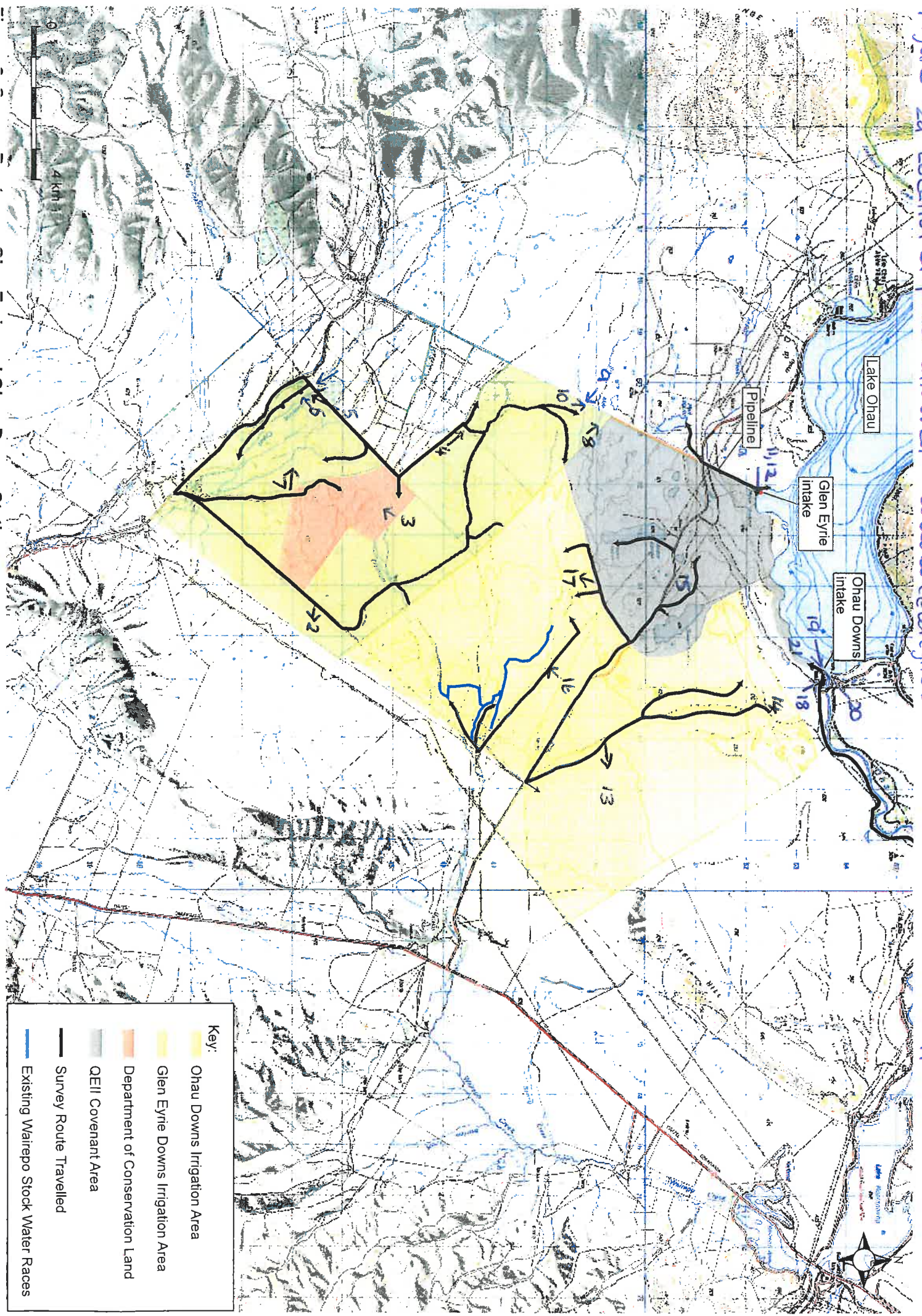


Figure 2a Location of plates attached to evidence (Glen Eyrie Downs and Ohau Downs Station) (approximate).



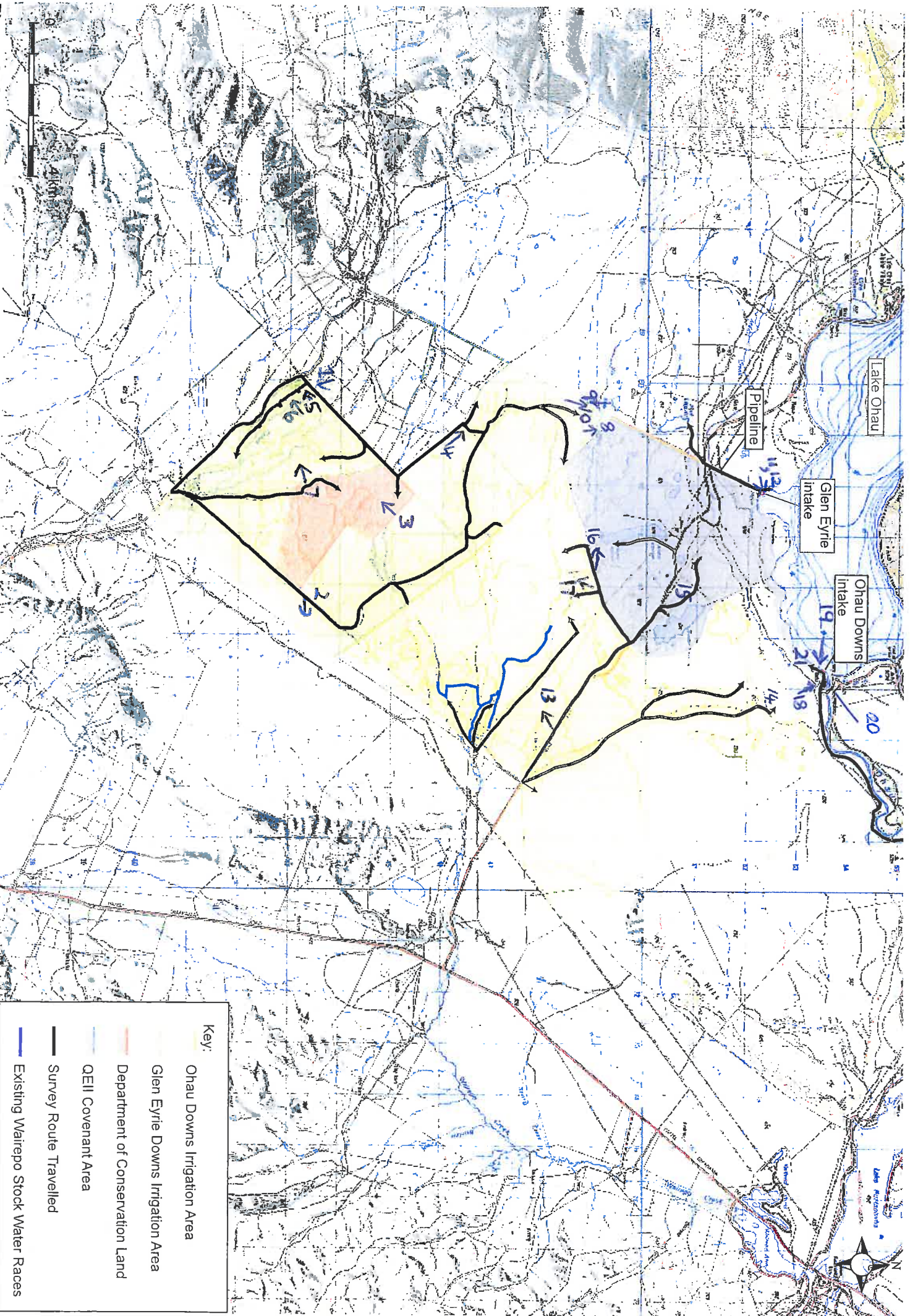
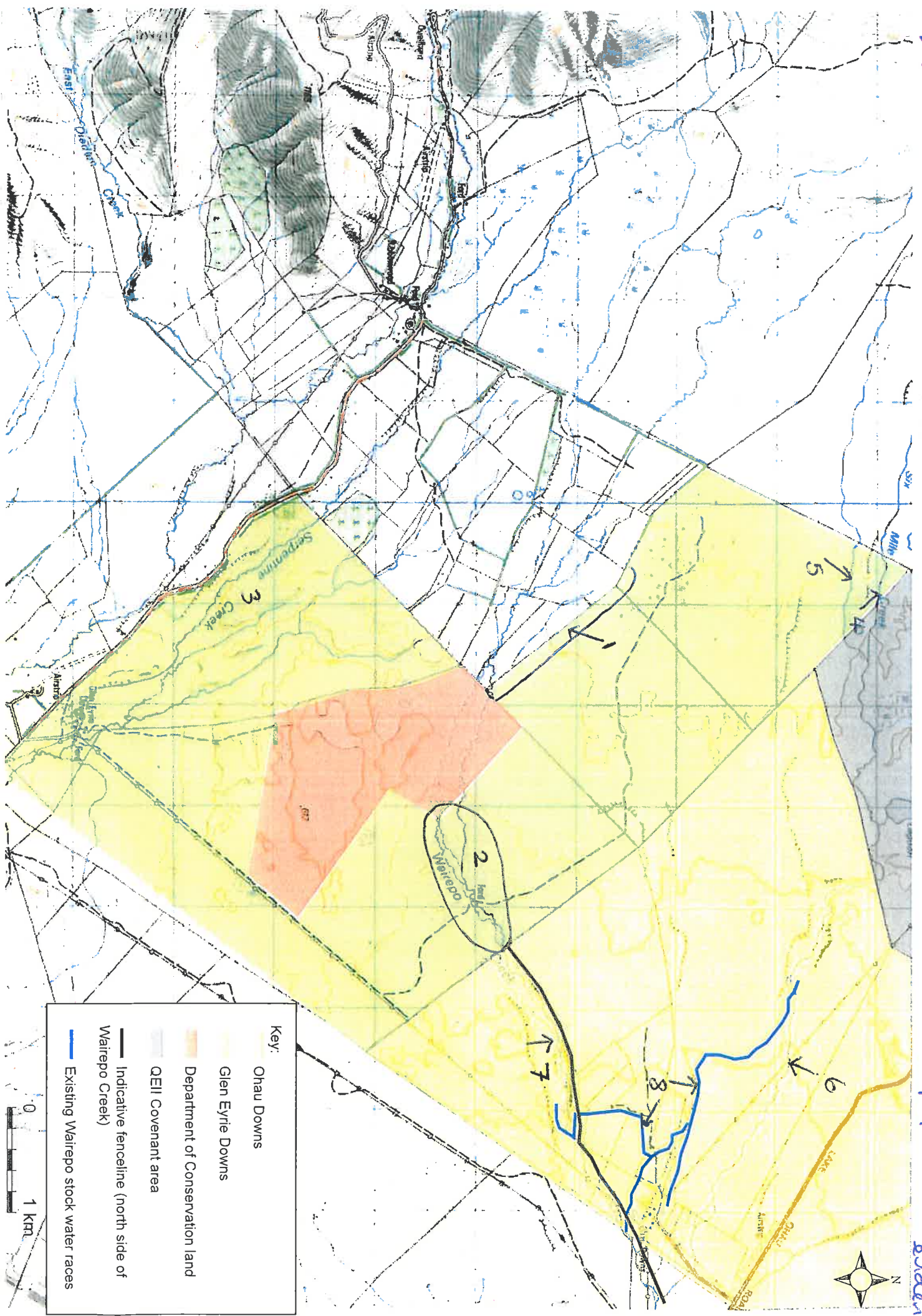


Figure 2. Survey Routes on Glen Eyrle and Ohau Downs Stations.  
 2a Location of plates attached to evidence (Glen Eyrle and Ohau Downs Stations) (approximate).



Figure 14 Streams Referred to on Table 1 "Location and treatment of streams on the four properties (Bentley evidence)"



Key:

- Ohau Downs
- Glen Eyrie Downs
- Department of Conservation land
- QEII Covenant area
- Indicative fenceline (north side of Wairepo Creek)
- Existing Wairepo stock water races

Figure 14b: Streams referred to on Table 1 "Location and treatment of streams on the four properties." (Bentley evidence).

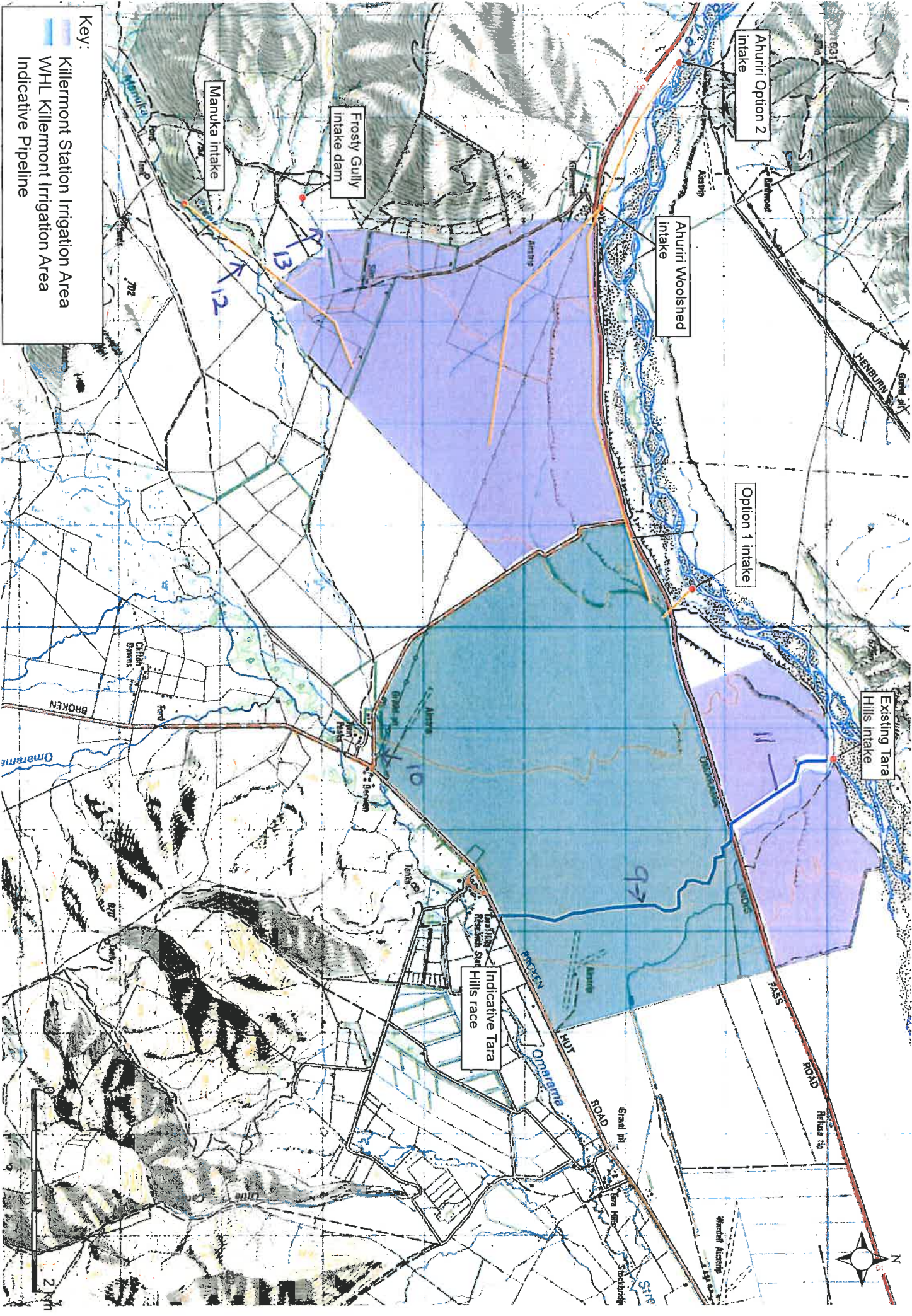


Figure 6: Features of WHL Killermont and Killermont Station.