

**Table 1. Determination of assessed damage level (from Building (Dam Safety) Regulations 2008)**

DAMAGE LEVEL	SPECIFIED CATEGORIES				
	Residential Houses <sup>1</sup>	Critical or Major Infrastructure <sup>2</sup>		Natural Environment	Community Recovery Time
		Damage	Time to Restore to operation <sup>3</sup>		
<b>Catastrophic</b>	More than 50 houses destroyed	Extensive and widespread destruction of and damage to several major infrastructure components	More than one year	Extensive and widespread damage	Many years
<b>Major</b>	4 to 49 houses destroyed and a number of houses damaged	Extensive destruction of and damage to more than one major infrastructure component	Up to 12 months	Heavy damage and costly restoration	Years
<b>Moderate</b>	1 to 3 houses destroyed and some damaged	Significant damage to at least one major infrastructure component	Up to 3 months	Significant but recoverable damage	Months
<b>Minimal</b>	Minor damage	Minor damage to major infrastructure components	Up to one week	Short-term damage	Days to weeks

- Notes:**
- 1 In relation to residential houses, destroyed means rendered inhabitable.
  - 2 Includes:
    - a) lifelines (power supply, water supply, gas supply, transportation systems, wastewater treatment, telecommunications (network mains and nodes rather than local connections)), and
    - b) emergency facilities (hospitals, police, fire services), and
    - c) large industrial, commercial or community facilities, the loss of which would have a significant impact on the community, and
    - d) the dam if the service the dam provides is critical to the community and that service cannot be provided by alternative means.
  - 3 Estimated time required to repair the damage sufficiently to return the critical and major infrastructure to normal operation.

**Table 2. Determination of Potential Impact Classification (PIC) (from Building (Dam Safety) Regulations 2008)**

ASSESSED DAMAGE LEVEL	POPULATION AT RISK (PAR)			
	0	1 to 10	11 to 100	More than 100
<b>Catastrophic</b>	High	High	High	High
<b>Major</b>	Medium	Medium/High (see note 4)	High	High
<b>Moderate</b>	Low	Low/Medium/High (see notes 3 & 4)	Medium/High (see note 4)	Medium/High (see notes 2 & 4)
<b>Minimal</b>	Low	Low/Medium/High (see notes 1, 3 & 4)	Low/Medium/High (see notes 1, 3 & 4)	Low/Medium/High (see notes 1, 3 & 4)

- Notes:**
- 1 With a PAR of five or more people, it is unlikely that the PIC will be Low
  - 2 With a PAR of more than 100 people, it is unlikely that the PIC will be Medium
  - 3 Use a Medium PIC if it is highly likely that a life will be lost
  - 4 Use a High PIC if it is highly likely that 2 or more lives will be lost

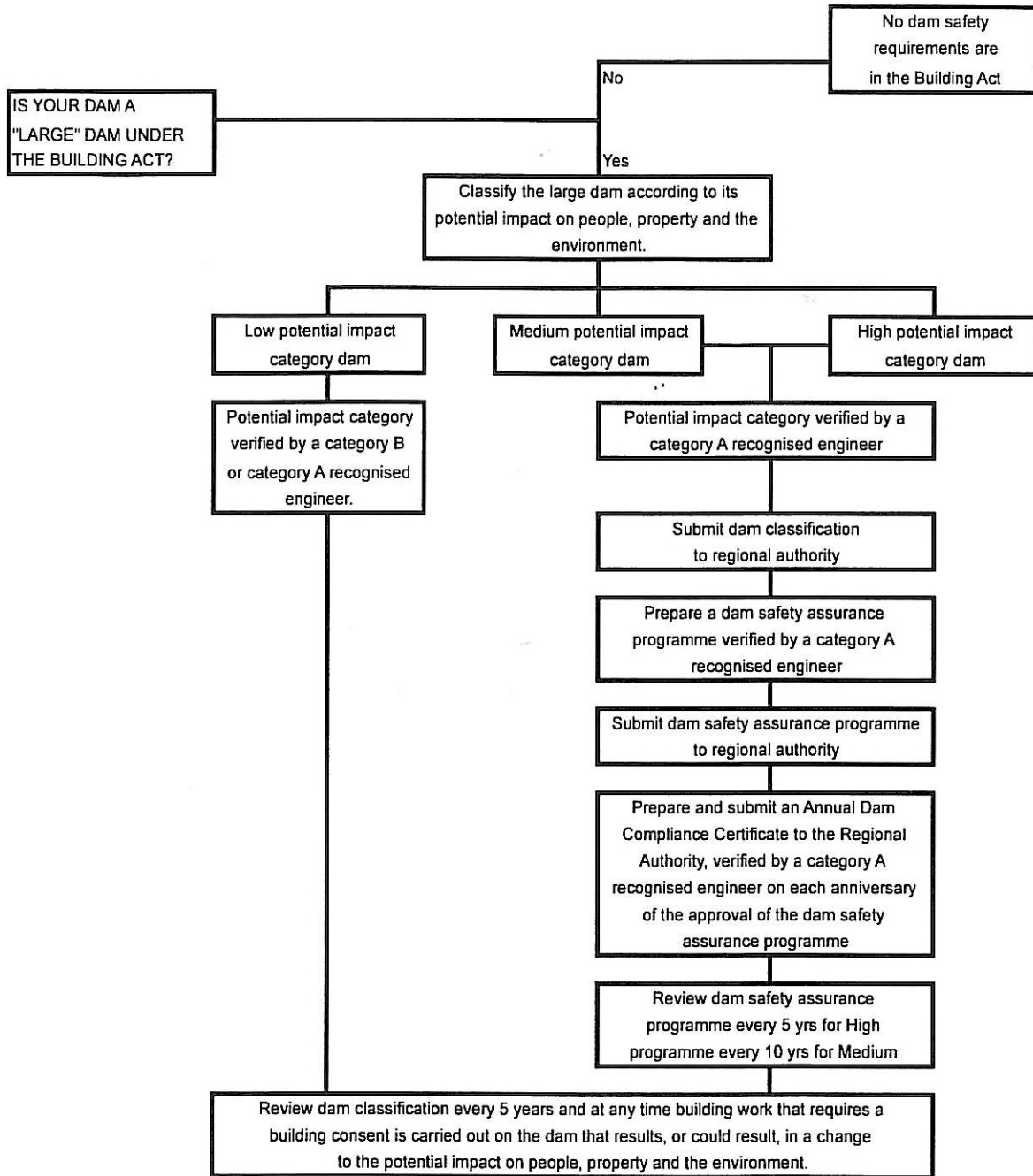


Figure 1. Dam safety requirements in the Building Act

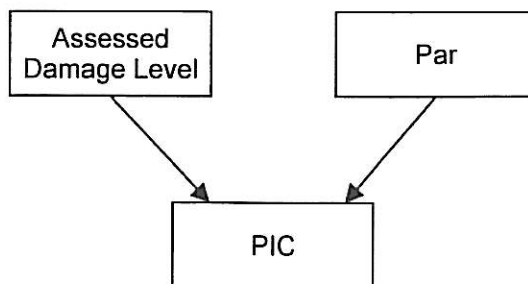


Figure 2. Steps in determination of PIC