

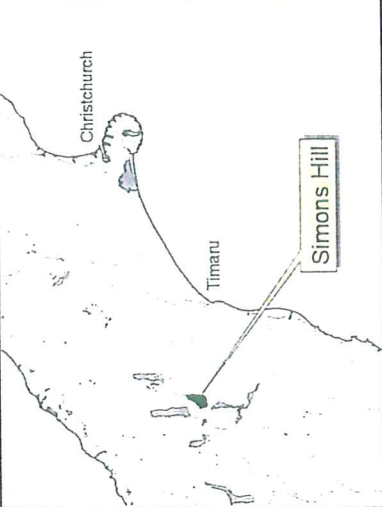


Simons Hill
Topo / Cadastral

 N
 0 0.5 1 1.5 2 Kilometers
 Map prepared: 10 August 2000
 Topographical map sheets 1:50,000 NZMS 260 138, 139, H38, 139


 Christchurch
 Timaru
Simons Hill

Riverbed subject to rapid flooding

▲ 477m

▲ 10081

▲ 701

▲ 570m

▲ 637m

▲ 574

▲ 567

▲ 592

▲ 81

▲ 570m

▲ 591

▲ 597

▲ 591

▲ 591

▲ 591

▲ 591

▲ 591

▲ 591

▲ 591

▲ 591

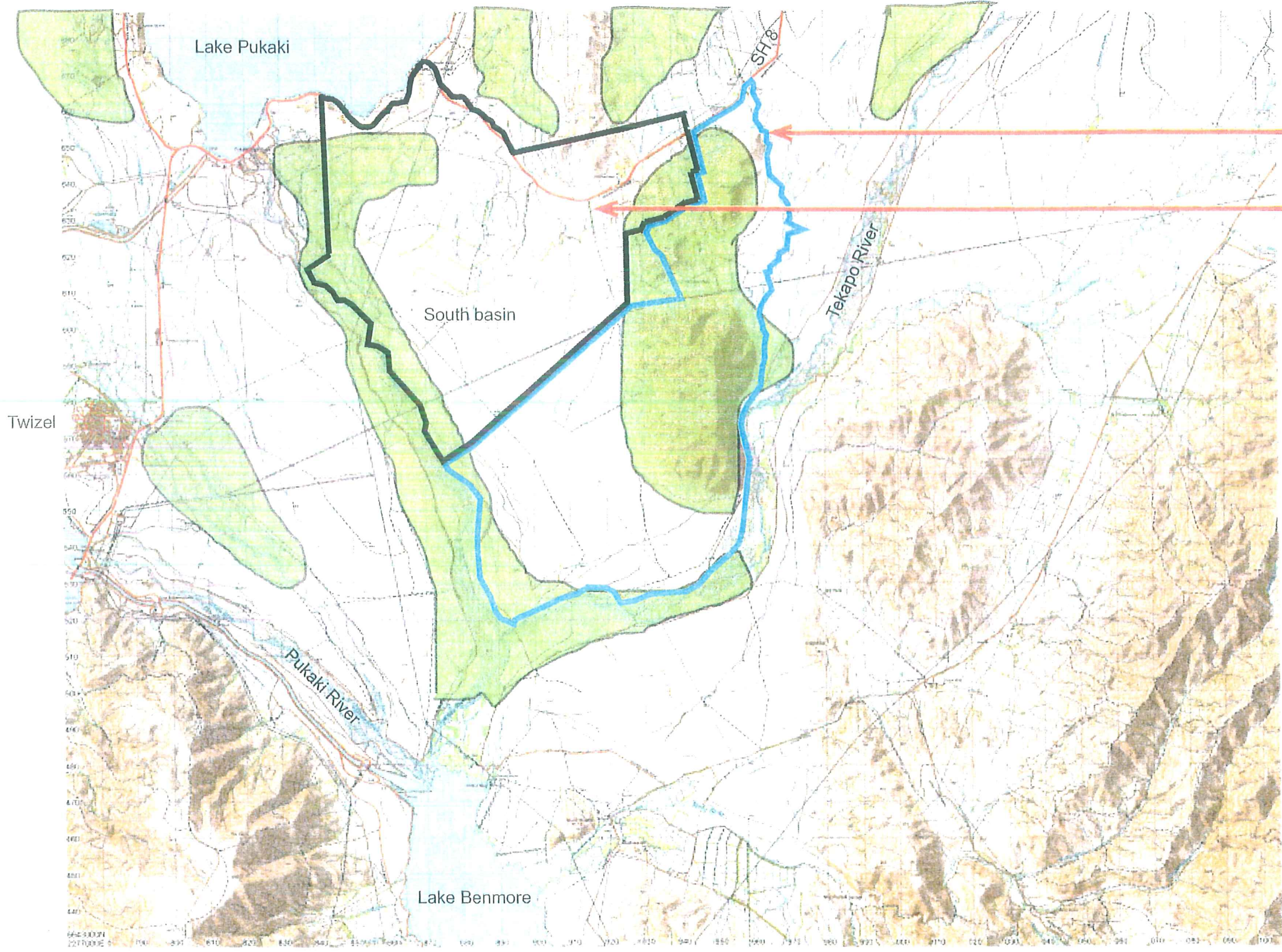
▲ 591

▲ 591

▲ 591


▲ 591

"B"



Simons Hill Station

Simons Pass Station

 Refers to an interpretation of the Council's development nodes on Simons Pass and Simons Hill Stations