

UNDER THE the Resource Management Act 1991 (the RMA)

IN THE MATTER OF various applications to take and use water for the purpose of irrigation in the Upper Waitaki Catchment

AND

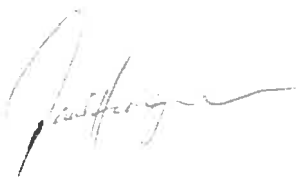
IN THE MATTER OF a submission by Te Runanga o Ngai Tahu

**MEMORANDUM ON BEHALF OF TE RUNANGA O NGAI TAHU REGARDING
APPLICATIONS BY SIMONS HILL STATION LIMITED, SIMONS PASS STATION
LIMITED AND PUKAKI IRRIGATION COMPANY LIMITED**

MAY IT PLEASE THE COURT:

- 1 Since the presentation of Ngai Tahu's submission in January this year there have been continuing discussions and consultation with the representatives of Simons Hill Station Limited, Simons Pass Station Limited and Pukaki Irrigation Company Limited regarding the applicant's proposals and in particular a Mahinga Kai enhancement proposal suggested for Simons Hill land adjacent to the Tekapo River.
- 2 At the time of presentation of it's case Ngai Tahu acknowledged the discussions that had taken place with Simons Hill consultants but had formed the view that because of the level of uncertainty surrounding the effects of the applications the applications should be opposed.
- 3 Ngai Tahu has been consulted concerning the further groundwater investigations that have been undertaken on Pukaki Flats and the applicant's staging proposal which it is understood is to be put forward as part of the applicant's closing.
- 4 Ngai Tahu's position now is:
 - (a) Formal opposition to the grant of these applications is maintained particularly in relation to dairying however;
 - (b) In the event consents are granted, Ngai Tahu supports the imposition of conditions requiring (1) that the proposal be undertaken in a staged manner (as suggested by the applicants) as a way of managing the uncertainties and risk associated with the proposed irrigation related activities, and (2) regular, thorough and ongoing monitoring to be undertaken to ensure that any adverse effects are detected as early as possible and an appropriate response implemented;
 - (c) Ngai Tahu supports the enhancement proposal put forward by the applicants and outlined in the diagrams attached to this Memorandum.

Dated this 27th day of April 2010



P Horgan
Environmental Advisor
Te Runanga o Ngai Tahu

Simons Hill Proposed Mahinga Kai Area

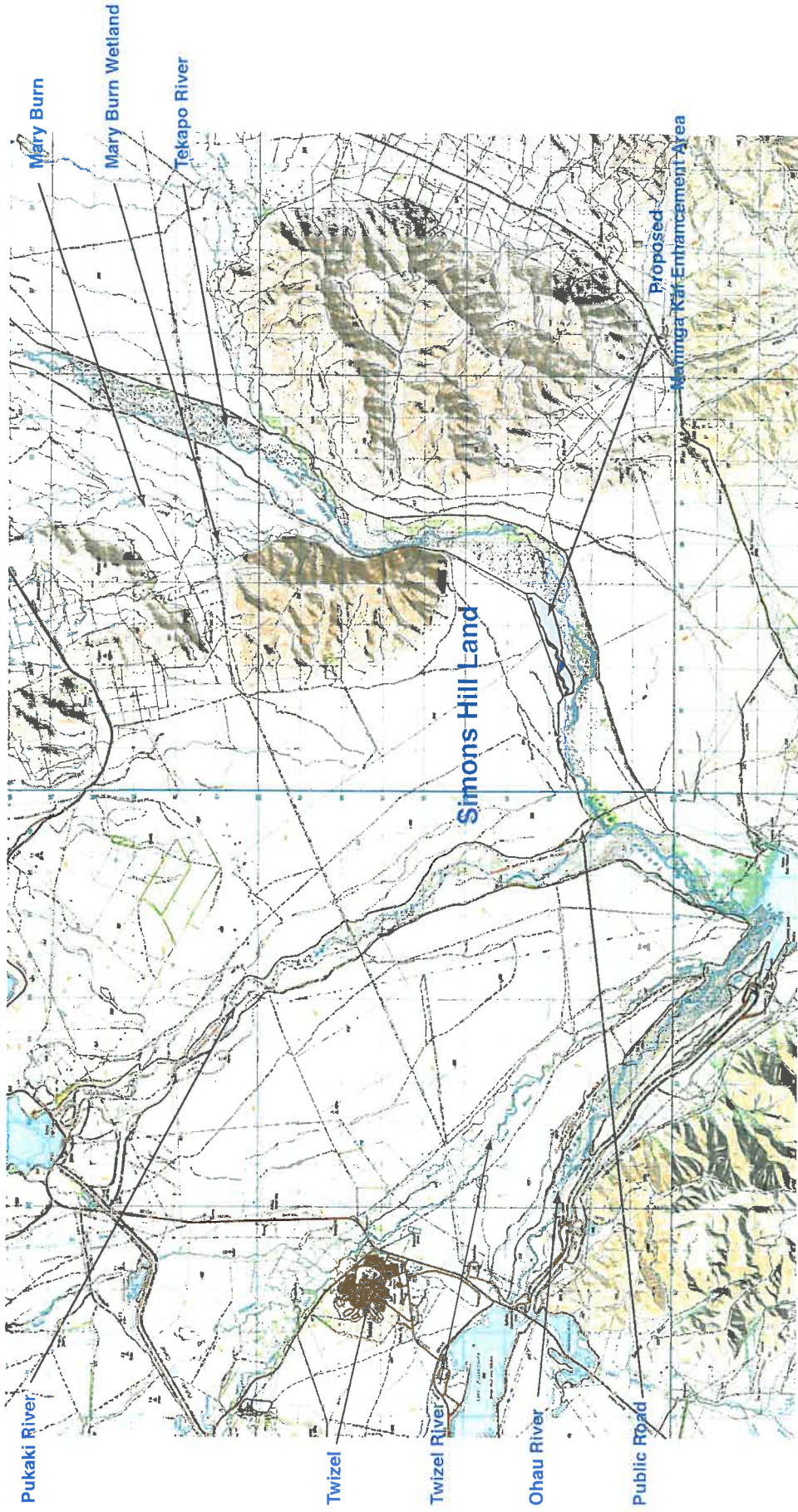


Plate 1: Map showing general location of enhancement area

Simons Hill Proposed Mahinga Kai Area

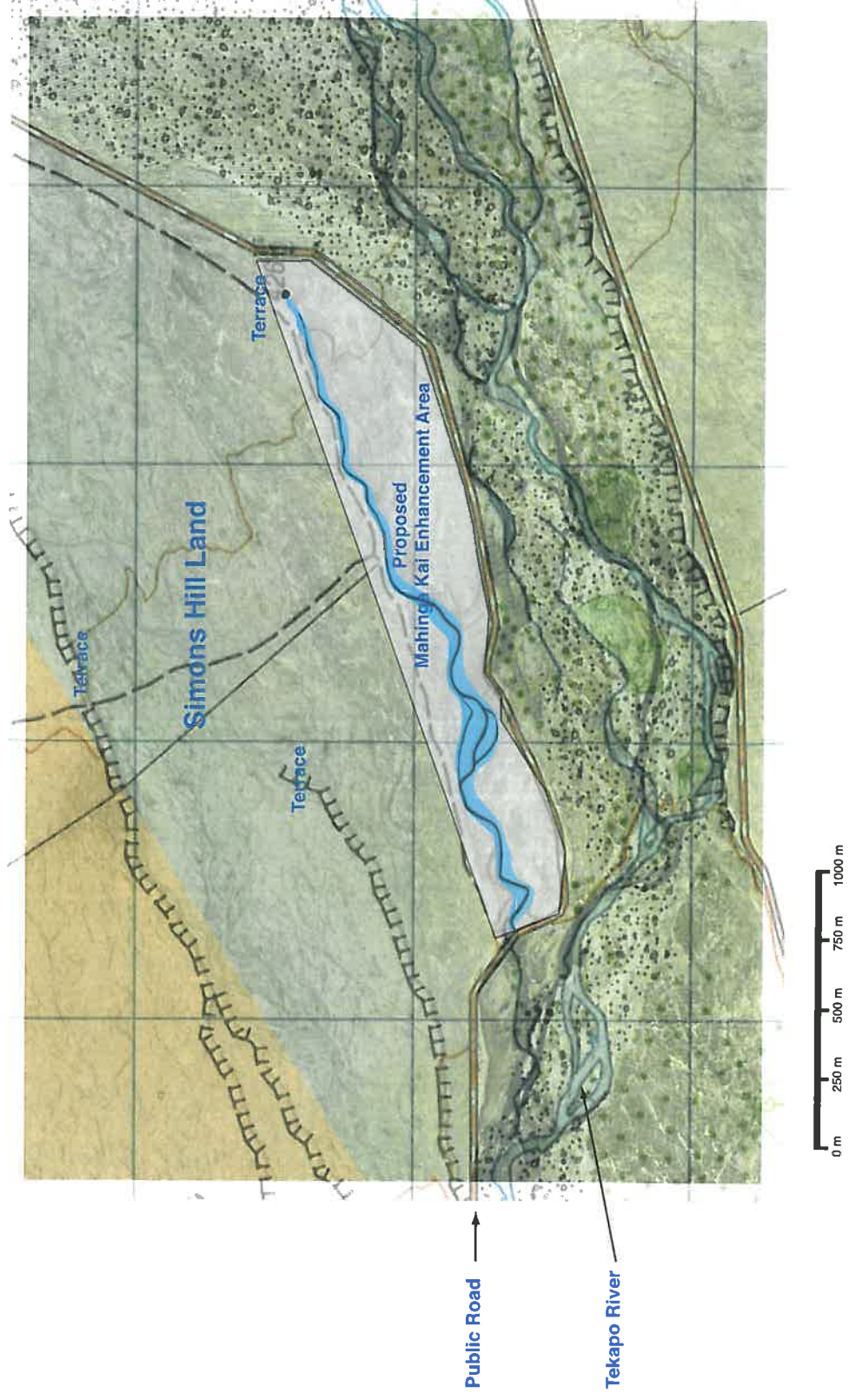


Plate 2: Aerial showing proposed enhancement area

Simons Hill Proposed Mahinga Kai Area

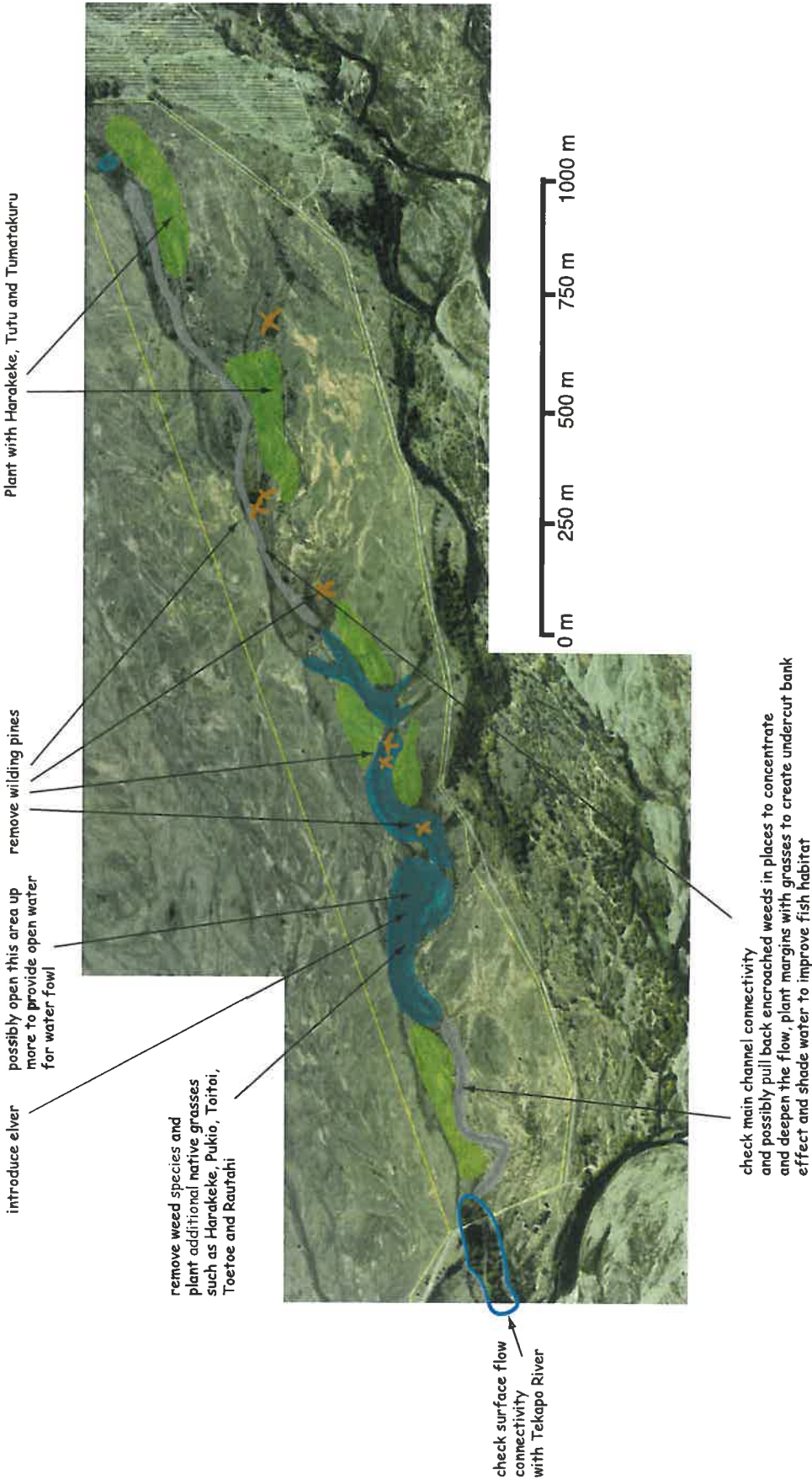


Plate 3: Potential enhancement options

Simons Hill Proposed Mahinga Kai Area

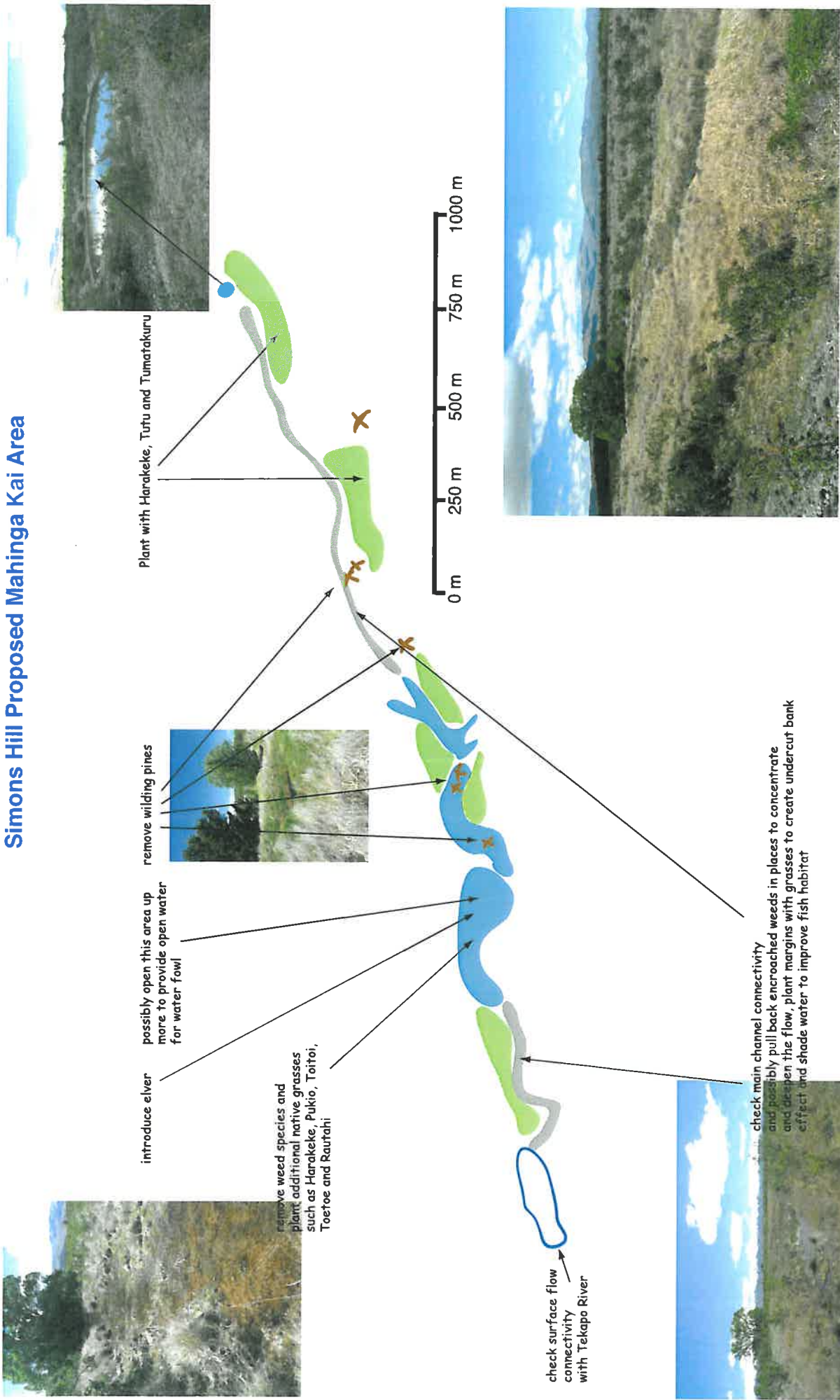


Plate 4: Potential enhancement options