



# Developing the Canterbury Regional Land Transport Strategy (RLTS) 2011 – 2041

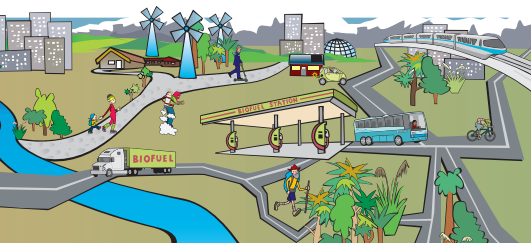
This newsletter has been produced to report progress on the development of the RLTS.

## What is a Regional Land Transport Strategy?

The Strategy sets the direction for the region's transport system over the next 30 years. It is important because it helps decide how the region's transport funding is used and provides direction to organisations such as city and district councils, and the New Zealand Transport Agency as they develop and implement transport projects.

## Who's responsible for the new Regional Land Transport Strategy?

Development of the Strategy is led by the Canterbury Regional Transport Committee. This is a committee that brings together representatives from Environment Canterbury, the New Zealand Transport Agency, city and district councils in the region and a number of community appointees.



## Further Details

For further details of the development of the Regional Land Transport Strategy:

email [transport@ecan.govt.nz](mailto:transport@ecan.govt.nz), or phone (03) 353 9007 during business hours if you are in Christchurch or 0800 324 636 from elsewhere in Canterbury.

## Transport Challenges Consultation

Late last year the Regional Transport Committee asked the people of Canterbury to help identify the key challenges facing our transport system between now and 2041.

A wide range of responses were received, but there were some common threads to the community feedback:

- Most people felt that public transport is a priority for the region and that we need to continue working to improve the options and services available.
- Many people felt that the region's rail network needs to be used more effectively, both for the movement of passengers and freight.
- Many people also felt it is important to enhance cycling opportunities and to encourage people to take up non car-based travel alternatives.

## Market research findings confirm that we love our cars

Alongside the public consultation process, some market research was recently carried out which confirmed the high value people place on the freedom their cars provide. The same research highlighted that people feel that the affordability and safety of our transport system should be priorities over the next 30 years.

## Other relevant information

A number of other reports have recently been completed to support development of the Regional Land



For a more extensive summary of the research & consultation findings, visit:

[www.ecan.govt.nz/rlltsreview](http://www.ecan.govt.nz/rlltsreview)

Transport Strategy, including:

- Peak Oil Vulnerability for Canterbury.
- Health Impact Assessment - Scoping Report.

Copies of these reports can be found by following the link to the webpage above.



## Where to from here?

At its next meeting it is anticipated that the Regional Transport Committee will approve the key issues underpinning the development of the Regional Land Transport Strategy. In addition, the Committee will consider the proposed objectives of the Strategy. Work has started on defining how these objectives will be measured and on identifying the strategic options that the region could take for its transport system. Later in the year these options will be evaluated against the objectives to identify the best direction for the region.

A Draft Regional Land Transport Strategy will be released for consultation early next year. This consultation process will include an opportunity for people to participate in public hearings before the Strategy is finalised in 2011.