

The Lower Waitaki-South Coastal Canterbury Zone Committee is one of 10 zone committees established throughout Canterbury in 2010 under the Canterbury Water Management Strategy.

The zone committee operates as a joint committee of Environment Canterbury and the Waimate and Waitaki District Councils. The appropriate rūnanga are also represented.

The committee works collaboratively to develop an effective water management implementation programme in consultation with the local community. The programme includes strategies, tactics and activities to give effect to the Canterbury Water Management Strategy's principles and targets.

The zone extends from the Otaio catchment in the north, to the Waitaki Dam in the south. It takes in Waimate, Kurow and Duntroon.



The Lower Waitaki Zone Committee visits a local farm to learn about successful effluent management, water use efficiency and the protection and restoration of wetlands

Activities and actions

Since its inception the Lower Waitaki - South Coastal Canterbury Zone Committee has had briefings from technical experts, a number of field trips around the district, and meetings with a wide range of stakeholders to gauge the range of views on water management issues.

The goal of the zone committee is to develop a programme of water management recommendations to councils.

At its November meeting, held in Oamaru, the committee was updated on the Waihao Wainono Flow and Allocation Regime before discussing community feedback to the committee's draft ZIP.

In late October members of the public were invited to attend community meetings around the zone to share their feedback on the draft ZIP. On line submissions could also be made until 25 November 2011 before a final ZIP is submitted to councils in early 2012.

In September the committee also held a number of community meetings to get feedback on its priority areas for water management in the zone, which fed in to the draft ZIP.

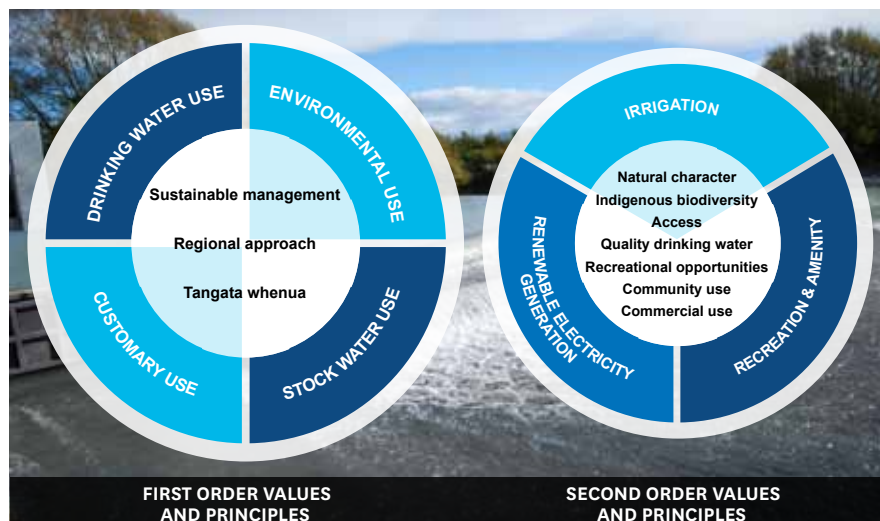
Targets

The committees are working to achieve the wide-ranging set of targets agreed as part of the development of the Canterbury Water Management Strategy.

The targets have ten broad areas and set goals for the coming five years, as well as setting milestones in 10 years and 30 years. The targets cover:

- Ecosystem health and biodiversity
- Braided rivers and natural character
- Kaitiakitanga
- Drinking water
- Recreational use and amenity opportunities
- Water-use efficiency
- Irrigated land area
- Energy security and efficiency
- Regional and national economies
- Environmental limits

The value the community places on water



January 2012

Lower Waitaki-South Coastal Canterbury Zone Committee



The Lower Waitaki-South Coastal Canterbury Zone Committee comprises:

Community members:

Chair: Robin Murphy, dairy farmer, Chair Morgen Glenavy Ikawai Irrigation Company

Deputy Chair: Kate White, farmer, established Waitaki Environmental Charitable Trust
Matthew Ross, farmer and business owner

Sean McCready, Partnership Manager - Meridian Energy

Andrew Cocking, South Island Regional Manager Blakely Pacific Ltd, member NZ Institute of Forestry

Anna Te Maiharoa-Dodds, whakapapa from Waitaha, marriage celebrant

Rūnanga representatives:

Patrick Tīpa (Moeraki)

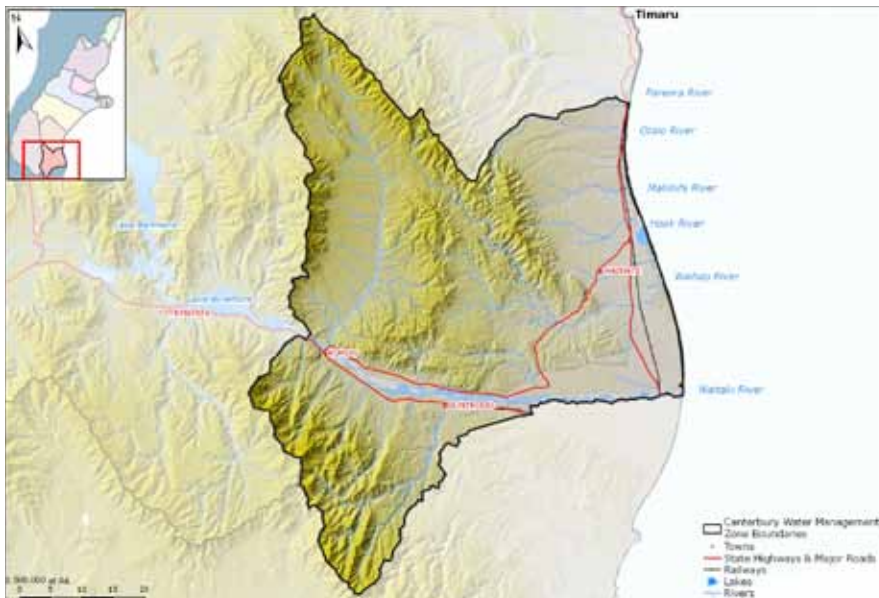
Te Wera King (Waihao)

Mandy Home (Arowhenua)

Environment Canterbury Commissioner: Peter Skelton

Waitaki District Council appointment: Geoff Keeling

Waimate District Council appointment: Peter McIlraith



Immediate Steps to protect biodiversity

The zone committee is also responsible for local implementation of the Immediate Steps Biodiversity programme.

Immediate Steps is a new \$10 million programme for biodiversity which is being introduced as part of the Canterbury Water Management Strategy.

The programme has an initial five year focus and will cover the protection of endangered species and waahi taonga (sacred sites). Immediate Steps also covers maintenance of Canterbury's braided rivers, providing habitat for native flora and fauna, as well as protecting wetlands and other ecosystems.

Zone Committee contacts:

Zone Facilitator

Melanie Schauer

Phone: 027 230 3745 or 03 435 0295

Email: melanie.schauer@ecan.govt.nz

Tangata Whenua Facilitators

Peter Te Rangihiroa Ramsden

Phone: 027 553 3140

Email: peter.ramsden@ecan.govt.nz

Rachel Puentener

Phone: 027 503 0458

Email: rachel.puentener@ecan.govt.nz

www.ecan.govt.nz/canterburywater

Committee meetings

A schedule of meetings is available at
www.ecan.govt.nz/canterburywater

Zone Committee meetings are open to the public.

Brought to you by Environment Canterbury working with

