

Clearer skies for Christchurch

Taking the next step towards clean air



Why focus on home heating?

Home heating has been shown to be the major cause of poor winter air quality. Every household that changes to a cleaner form of heating helps Christchurch take another step towards clean air.

What happens if I can't get ready in time?

The important thing is to start getting ready. From next winter Environment Canterbury can impose penalties of \$300 for a first offence, rising to \$1050 for repeat offences. If you're already taking steps towards cleaner heating and are waiting for an installation, we'll take that into account.

Is there anything else I can do to help?

If you're bothered by a smoky chimney in your area, call our pollution hotline on **0800 76 55 88** at any time, day or night. Our staff will investigate and take appropriate action.

Act now and get ready for winter 2010

For more information about the rules for Christchurch or the Air Plan in general, go to www.ecan.govt.nz/air.

For further enquiries, call customer services on 03 353 9007



For more than a decade, clean air has been one of the top environmental priorities for Canterbury people. Air quality has improved in Christchurch over recent years as people have switched to cleaner forms of heating. Now it is set to get even better as new rules for open fires and solid fuel burners take effect from 1 April 2010.

What's new?

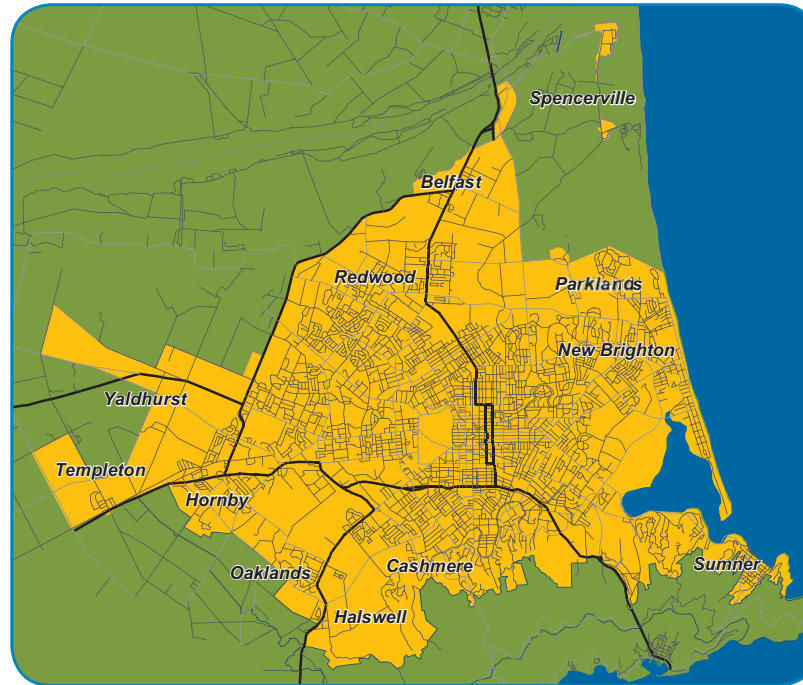
From 2010, only approved burners less than 15 years old can be used between 1 April and 30 September in Christchurch*.

This means if you depend on an open fire or on a wood or coal burner more than 15 years old to heat your home, you will need to get an alternative ready. If you're not sure how old your burner is, visit the Environment Canterbury website.

What's behind the change?

Under the cold, calm conditions typical of a Christchurch winter, air pollution from home heating becomes trapped and can cause serious health problems. For the sake of our health, Christchurch must meet a National Environmental Standard which is much lower than current pollution levels by 2013. Environment Canterbury has an Air Plan to help deliver cleaner air and these rules for home heating are part of that plan.

Christchurch Clean Air Zone 1



*Clean Air Zone 1 extends from Belfast to Halswell and from Templeton to Sumner

What is an 'approved burner'?

A list of approved burners that meet the clean air standards is on the Environment Canterbury website. You will also find useful information on alternatives to burning wood.



Can I get assistance to upgrade to cleaner heating?



You may be eligible for assistance from the Clean Heat Project (www.cleanheat.co.nz or phone 0800 32 92 76). In recent years more than 13,000 homes have received assistance including subsidies or loans for both insulation and heating.

