

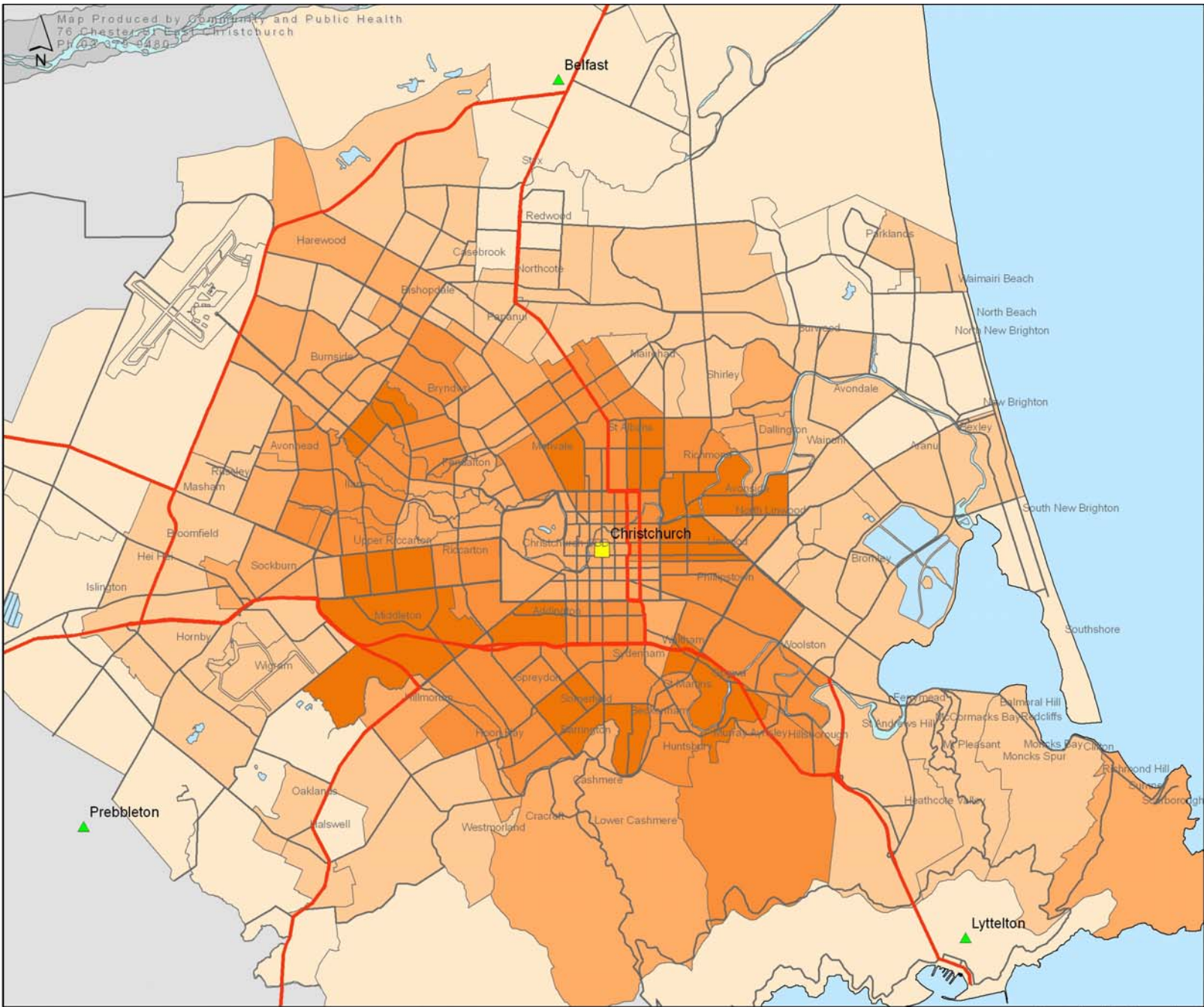
# Community Cycling Schemes

Improving the accessibility and  
affordability of cycling in  
Canterbury

**Penny Wilson**

**Community and Public Health**

**Christchurch:  
 Proportion of travel to work  
 by bicycle by CAU  
 (Census Area Unit)  
 2006 Census**



— State Highway  
 — Arterial Roads

**% Travel to work by bicycle**

Lightest Orange	1.4% - 4%
Light Orange	4.2% - 5.9%
Medium Orange	6.2% - 7.6%
Dark Orange	7.7% - 9.3%
Darkest Orange	9.5% - 11%

Jenks (natural breaks) classification

# Community Cycling Scheme

- Promotion and awareness of cycling
- Affordability and availability of bikes
- Cycle skills
- Advocacy for supportive environments-  
cycle paths, multi-modal journeys etc

# Green Bikes Christchurch?



# The Green Bike Concept

- Cycle loan scheme
- Bikes available from
  - Central points in the community
  - Tertiary institutions
  - Tourist destinations
- Variety of payment & distribution methods
- ‘Recycled’ bikes or ‘Fleet’ bikes

# Potential Benefits

- Recycling unused bikes and bike-parts
- Links with employment schemes
- Cycle maintenance skill development
- Low-cost bikes accessible to community
- Increased uptake of short-distance cycling
- Reduced traffic congestion
- Reduced carbon emissions
- Improved health and wellbeing

# Green Bikes Programmes in New Zealand

# Christchurch

- 1970's Maori Boys Hostel White Bikes (MEd)

# Nelson-Marlborough

- Full time mechanic, volunteers
- Green bikes were offered for free
- Participants signed waiver form
- Problems faced:
  - Disposing of unwanted parts
  - Bikes being dumped in rivers
  - Time consuming

# Palmerston North

- 1 paid employee & team volunteers
- Central bike collection point
- No cost, no limits on rental time
- Some helmets available or BYO
- Participants sign waiver form
- Maintenance service available
- Peppercorn rental for premises
- Funding from community grants

# NZ Green Bikes-Porirua

- Trustees, Part time manager, Volunteers
- Funding PCC, MSD, Rental Returns
- Several distribution mechanisms;
  - Free community bikes available via application
  - Volunteer program; 20hours workshop = free bike
  - Tertiary Rental Program \$2.25/day
  - Bikewise Rental Program
  - Corporate Fleets- 24 mountain bikes available
  - Bikes for Africa Micro-Enterprise Scheme

# Dunedin

- Development of proto-type bike
- Purchased fleet bikes for polytechnic staff

## International Information

- International Case Studies Available @ <http://www.ibike.org> under Community Bike Programmes
- CCC Review

# Key Components – Recycling Scheme

- **Partnerships**
  - Potential links across many sectors
- **Premises**
  - Cycle storage and workshop
- **Parking**
- **People**
  - Part time coordinator / mechanic
  - Workshop assistants / volunteers
- **Pot of Gold?**
  - Council, NGO, community partnerships

# Considerations – Recycling Scheme

- Safety - helmets
- Liability Insurance
- Workshop standards
- Criteria for accepting bikes
- Process for getting rid of surplus
- Distribution of bikes; access points, charge
- Ongoing maintenance

# Key Elements of Success Smart-bike Schemes

- Strong & ongoing commitment to cycling
- Community awareness and support
- Good cycling infra-structure
- Cater for students, tourists
- Modal links
- Partnerships

# Community Cycling Scheme

## Next Steps?

- Identify potential partners
- Commitment from partners
- Planning sub-group
- Submission