



# Greater Christchurch Metro Strategy Review Update

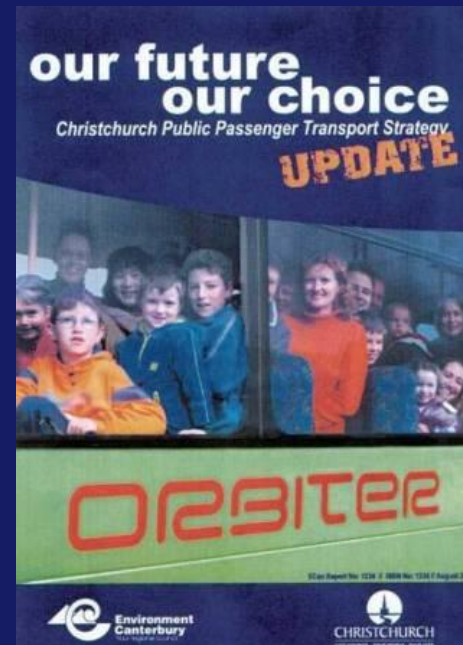
CAT Forum  
15 June 2010





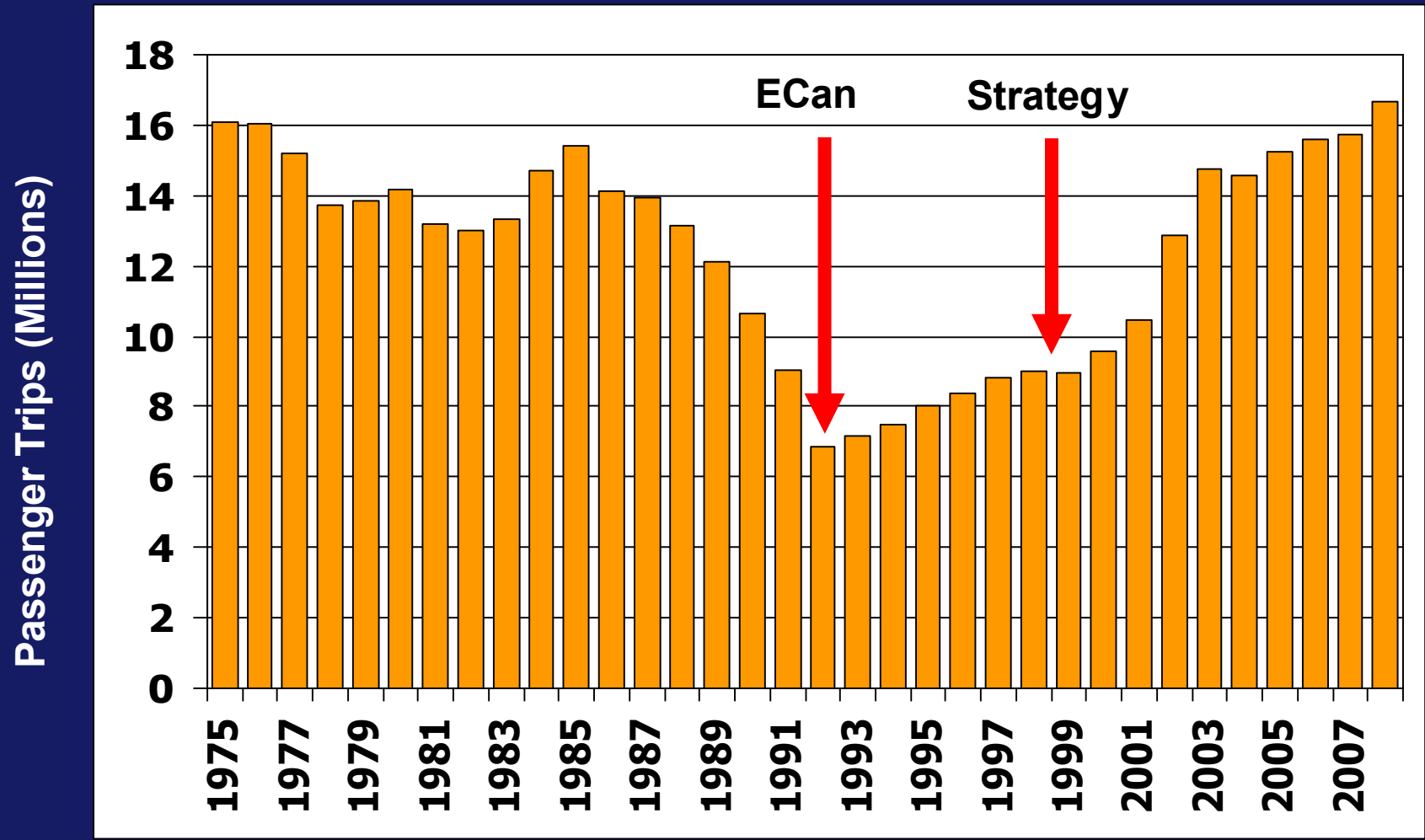
## Christchurch Metro Strategy

- First Metro Strategy developed in 1998
- Public set targets for Metro improvements
- Led to significant improvements including:
  - Orbiter
  - Metrocard
  - Bus Exchange
  - Real Time Information
- Patronage has increased by 93% since 1998





# Christchurch Patronage





## Metro Strategy Secret to Success

- Targets are based on public suggestions = delivers what the community want
- Passenger Transport Advisory Group analyse all of the public feedback . not staff
- Final document adopted by all Councils = commitment to deliver improvements
- Expanding this Strategy to include entire UDS area





## Review Process

- Expanded PTAG reconvened in February
- Brochure sent to all UDS households in March
- Advertised review through newspapers, radio, posters
- Consultation closed 16 April 2010
- Feedback was collated and presented to PTAG
- PTAG prepared new draft targets
- Take draft to UDSIC and Councils for adoption in June/July 2010





## Review Results

- A total of 1904 written responses were received
- Even distribution of responses across districts and from regular, occasional and non-bus users
- 93% think we should encourage more public transport use in the future
- 84% think we should invest more money in public transport in the future





## Review Results

Most important issues as rated by the public:

- More reliable services
- Increased frequency
- Bus priority on key corridors
- Investigating future modes (especially rail)
- Providing Park and Ride





## Process From Here

- Draft vision, goals and targets are presented to UDSIC on 28 June
- Upon their approval, the draft will be presented to each Council for adoption in July
- Once Strategy is adopted, it will be printed and publicly launched in September
- Action Plan will be developed to implement targets and monitored monthly



## Bus Priority – Corridor 1

- Papanui/Main North Road was constructed from October 2009 . February 2010
- Results so far are positive . travel times, reliability and speed are improving
- Travel time surveys of other vehicles show no major impacts





## Bus Priority Travel Times

- Travel times have improved by **2-3 minutes** on average at peak times  
(Nov 2008 & Feb 2009 vs. Nov 2009 & Feb 2010)
- Biggest savings 8-9am (-3.4 mins) and 3-4pm (-3.7 mins)

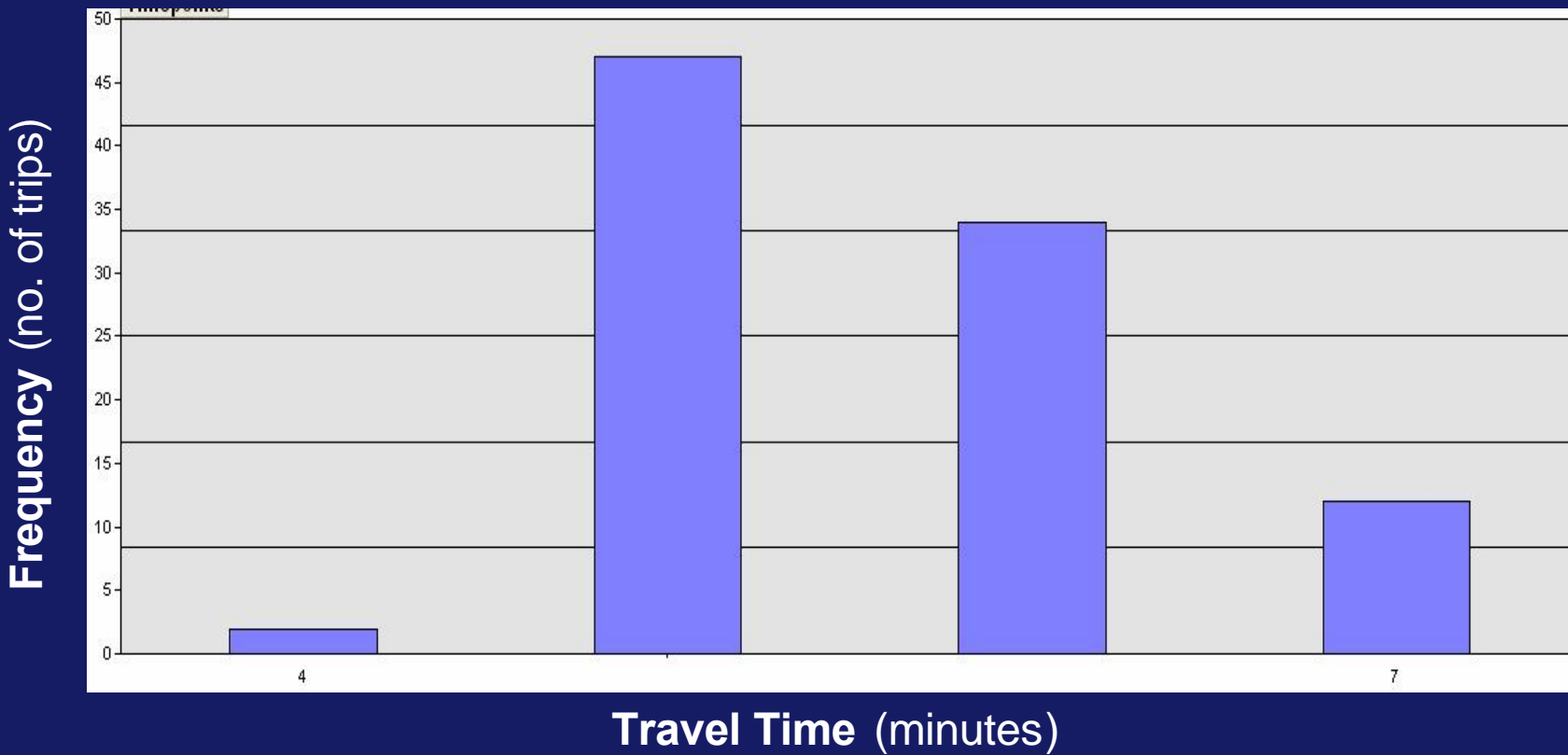
| Time  | Pre-Bus Priority Average Travel Time | Post-Bus Priority Average Travel Time | Change in Travel Time | % Change in Travel Time |
|-------|--------------------------------------|---------------------------------------|-----------------------|-------------------------|
| 7-9am | 10.9 mins                            | 8.9 mins                              | -2 mins               | -18.3%                  |
| 3-5pm | 13.8 mins                            | 10.8 mins                             | -3 mins               | -21.7%                  |



# Bus Priority Reliability

- Reliability has improved . less variation in travel times

Ideal Travel Time Graph . Bealey Avenue to Northlands 9pm to Midnight





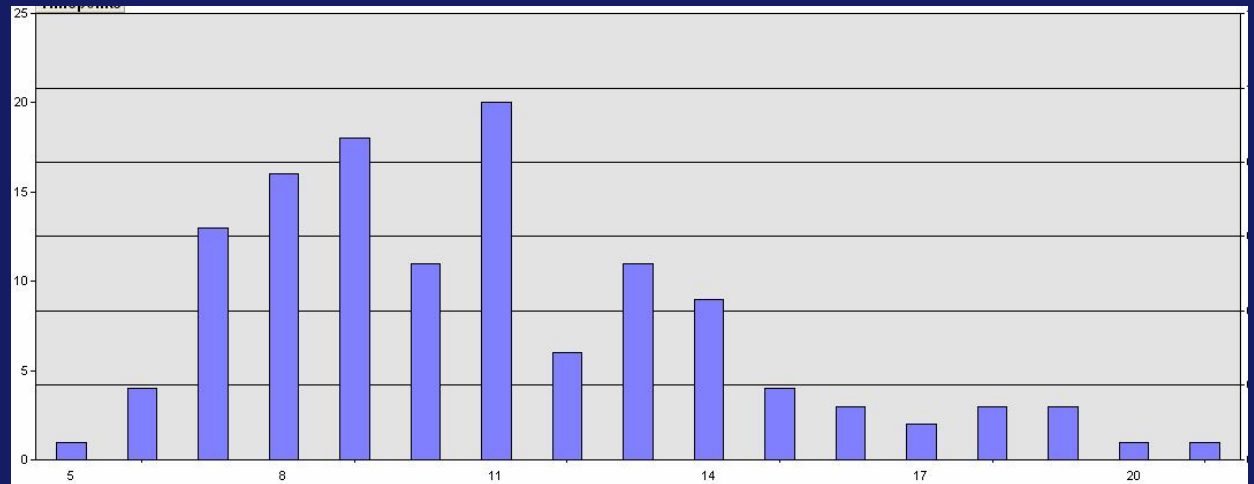
# Bus Priority Reliability – AM Peak

## Pre-bus priority:

Min = 5 mins

Max = 21 mins

Range = 16 mins

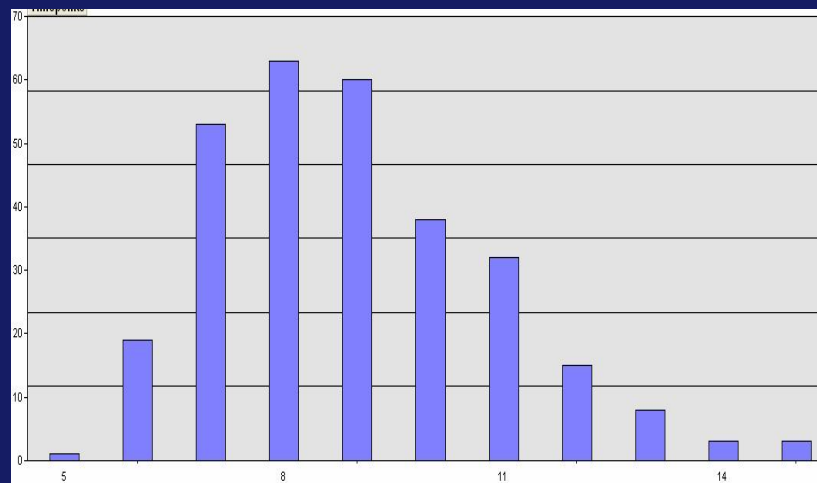


## Post-bus priority:

Min = 5 mins

Max = 15 mins

Range = 10 mins





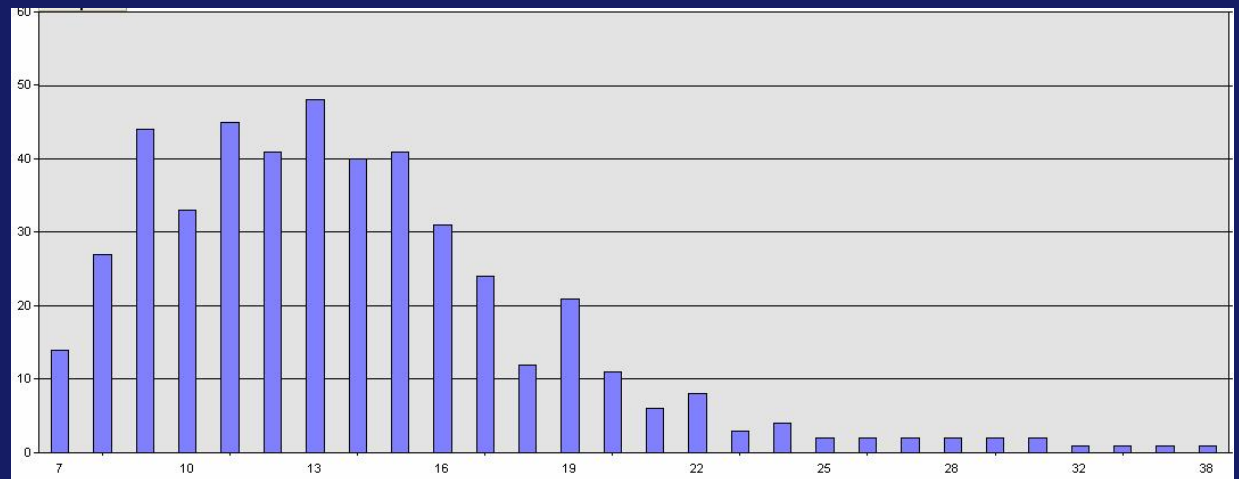
# Bus Priority Reliability – PM Peak

## Pre-bus priority:

Min = 7 mins

Max = 34 mins

Range = **27 mins**

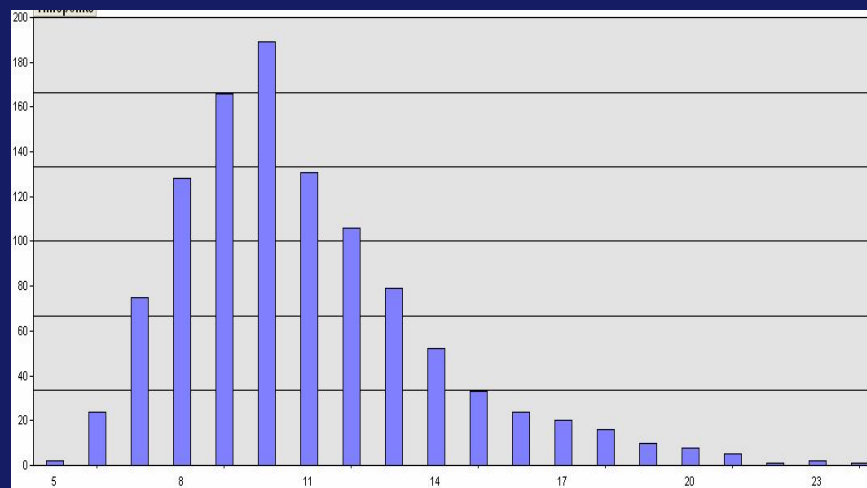


## Post-bus priority:

Min = 5 mins

Max = 24 mins

Range = **19 mins**





## Bus Priority Travel Speeds

- Travel speeds have improved by **3-4 km/hr** on average (Nov 2008 & Feb 2009 vs. Nov 2009 & Feb 2010)
- Biggest gains 8-9am (+5.9 km/hr) and 3-5pm (+4.1km/hr)

| Time  | Pre-Bus Priority Average Travel Time (km/hr) | Post-Bus Priority Average Travel Time (km/hr) | Change in Travel Time | % Change in Travel Time |
|-------|--|---|-----------------------|-------------------------|
| 7-9am | 21.2 km/hr                                   | 24.7 km/hr                                    | +3.5 km/hr            | +16.8%                  |
| 3-5pm | 16.6 km/hr                                   | 20.6 km/hr                                    | +4 km/hr              | 23.8%                   |



## Next Bus Priority Corridors

- Queenspark route was completed in May
- Colombo Street south is now being completed
- Will evaluate impact after a couple of months
- Full review of all corridors one year after completion
- Design underway for Riccarton Road
- Possible cycle workshop





# Any Questions?

A composite image for the Metro Strategy 2006-2012 report. It features a circular inset showing two young girls in school uniforms, one in a yellow shirt and one in a dark blue shirt, looking at a computer monitor. The background of the cover is a blurred image of a man in a suit. The Metro logo is in the top left corner of the cover.

**Metro Strategy**  
**2006 - 2012**

Where is Metro  
taking you?

CHRISTCHURCH  
CITY COUNCIL

Environment  
Canterbury