



Transport challenges for Canterbury

A new transport plan towards 2041.

As part of developing a new Regional Land Transport Strategy we want to know what you think about the transport issues in Canterbury so that our plans reflect your needs and those of generations to come.

- >> What do you think are the most important transport issues and challenges for the region over the next 30 years?
- >> What are some of the important local issues that must be managed?
- >> What would you like the region's transport system to look like in 2041?

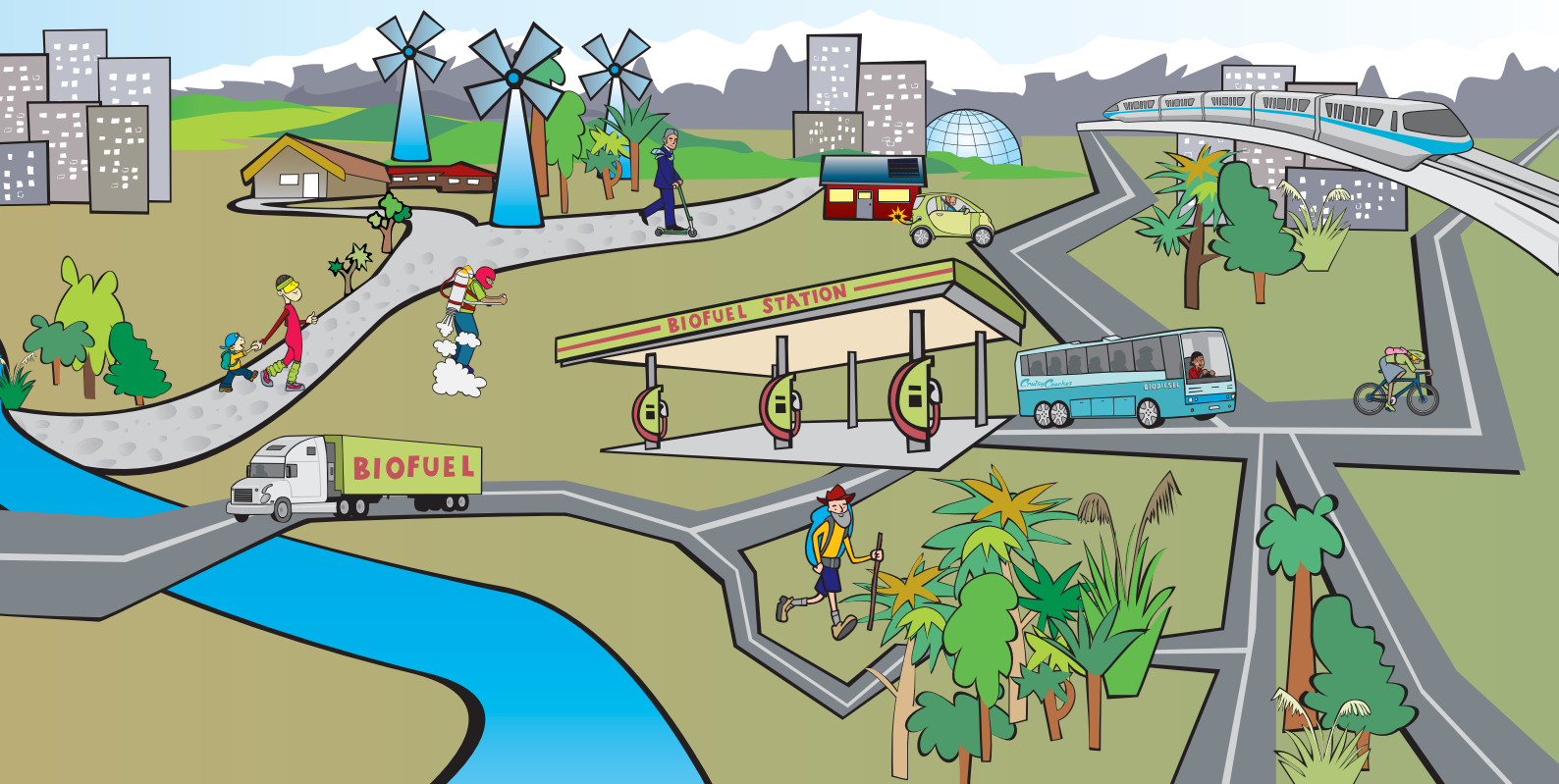
This leaflet provides examples of some of the issues that we must face as we plan for Canterbury's future transport system.

Tell us what you think!

THE FUTURE? >>>>>

For further details or to give us your input online, go to www.ecan.govt.nz/transport or email transport@ecan.govt.nz

The deadline for comments is 9 December 2009.



Where to from here?

Your input will help us develop a clearer understanding of the issues so we can then start investigating the best options for managing them. The options considered will be used to compile a draft strategy that will undergo further public consultation in 2011. When the Strategy is finalised in 2011 it will set out the key transport plans that will be progressed within Canterbury over the next 30 years.

The Strategy will be reviewed every six years, to ensure the direction continues to take into account the desires of the community and is able to address new challenges as they arise.

Further information

If you would like to be kept informed of the development of the Regional Land Transport Strategy 2011-2041 join our mailing list at www.ecan.govt.nz/transport or phone: (03) 353 9007 in Christchurch or toll free on 0800 EC INFO (0800 324 636) during business hours. Alternatively you can email transport@ecan.govt.nz

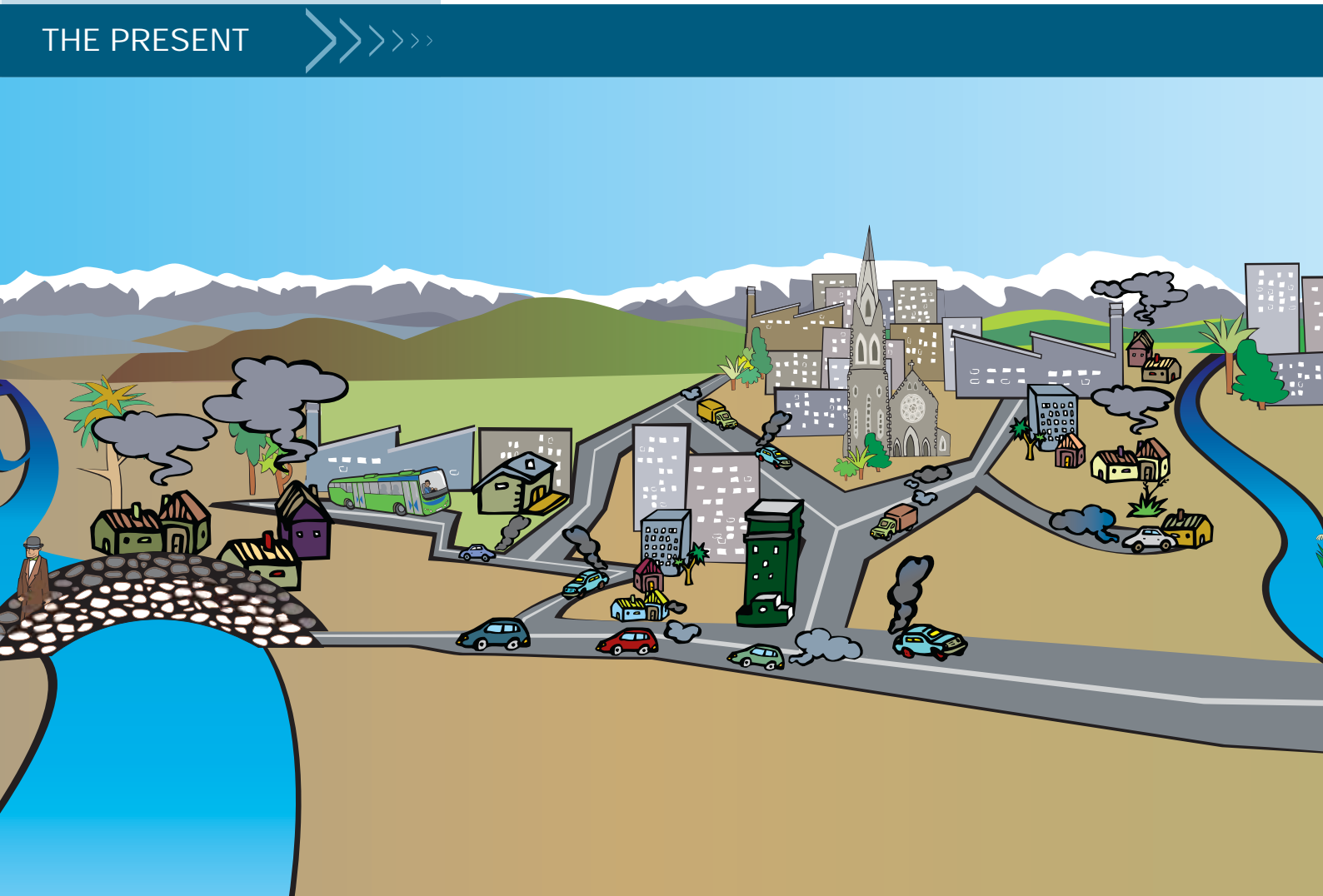
Get Involved – Regional Workshops

If you would like to participate in a workshop to discuss the key issues and challenges facing the region's transport system please contact James Ryan at Environment Canterbury: email james.ryan@ecan.govt.nz or phone 03 364 9801.

Timetable for completing the Regional Land Transport Strategy 2011 - 2041

Issues Identification	October 2009 – January 2010
Develop Goals & Objectives	February 2010
Develop and Evaluate Options	March 2010
Prepare Preferred Strategy	December 2010
Consult on Draft Strategy	March 2011
Finalise Strategy	June 2011

THE PRESENT



The decisions we make now will shape the future

Work has started on a new plan to manage Canterbury's transport system – the Canterbury Regional Land Transport Strategy 2011-2041. As part of the development of the Strategy, we need to understand the key challenges facing our transport system over the next 30 years.

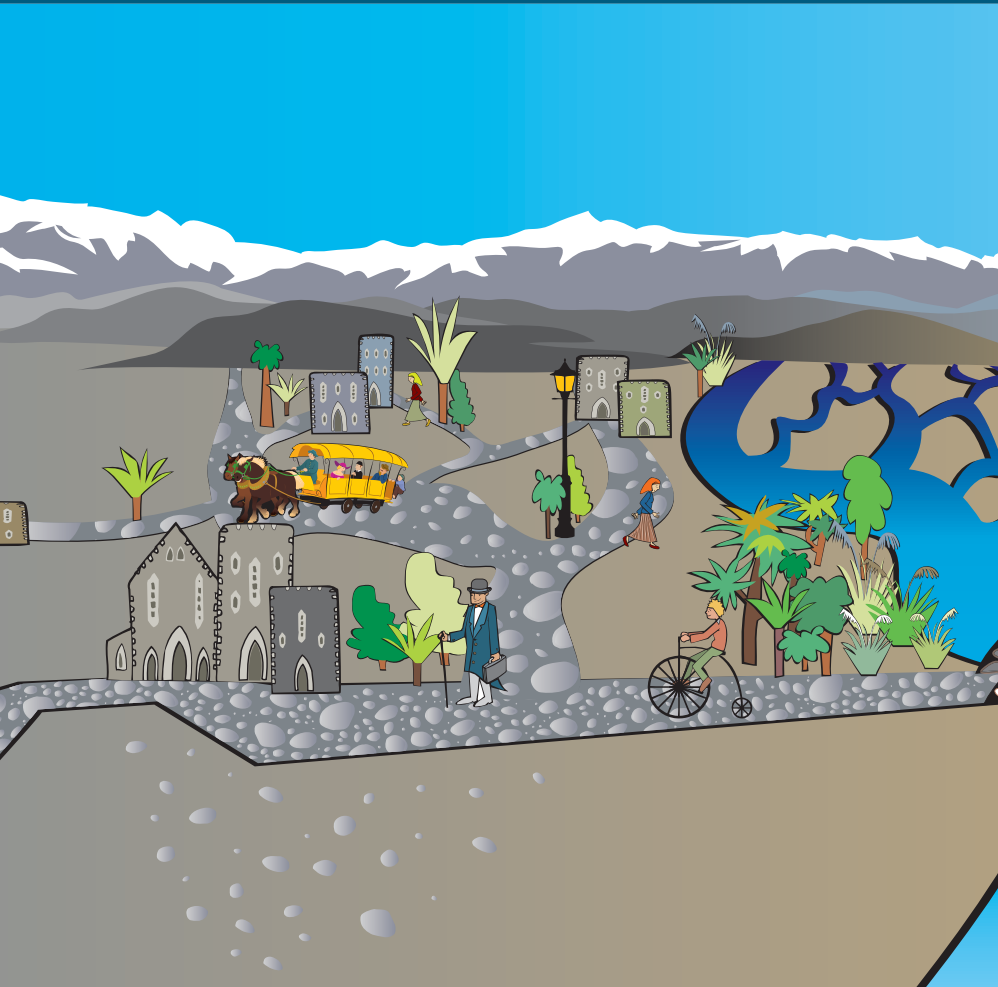
What is a Regional Land Transport Strategy?

The Regional Land Transport Strategy sets the direction for the region's transport system for the next 30 years. The Strategy is important for a number of reasons. It influences how the region's transport funding is used and it provides direction to organisations, such as city and district councils, and the New Zealand Transport Agency, as they develop, fund and implement transport projects.

Who is responsible for the Canterbury Regional Land Transport Strategy 2011-2041?

Development of the Strategy is led by the Canterbury Regional Transport Committee. This is a committee that brings together representatives from Environment Canterbury, the New Zealand Transport Agency, city and district councils in the region and a number of community appointees.

THE PAST





I am pleased to be able to offer you the opportunity to say what you think about transport issues in Canterbury when it matters – before we start!

We will of course make sure that any previous feedback you have given to your local council on transport issues is included in the mix.

Please help us to ensure your needs and views are reflected in what will be YOUR Regional Land Transport Strategy for the next 30 years. Let's make it the best it can be.

Jo Kane
Councillor, Environment Canterbury
Chair, Canterbury Regional Transport Committee

Looking ahead

Transport has a major impact on our lives. We use it to get to school, work, shops and to access the services we use as part of everyday life. Effective management of the region's transport system is essential to support our wellbeing.

Based on current trends, in the future we will be spending more time and money travelling, which could have greater impacts on the environment and higher social costs.

One of the key challenges we face is to manage these issues effectively in order to develop a more sustainable transport system.



What are some of the key issues and challenges facing the region's transport system over the next 30 years?



Population and household changes

By 2041, our region's population is expected to grow from about 550,000 to 650,000. The growth in population and household numbers will increase our travel demands.

The number of people in the region aged 65 and over is expected to double by 2020. This has implications for our transport system, particularly as the number of older drivers on the roads increases and there are greater demands on our public transport system.

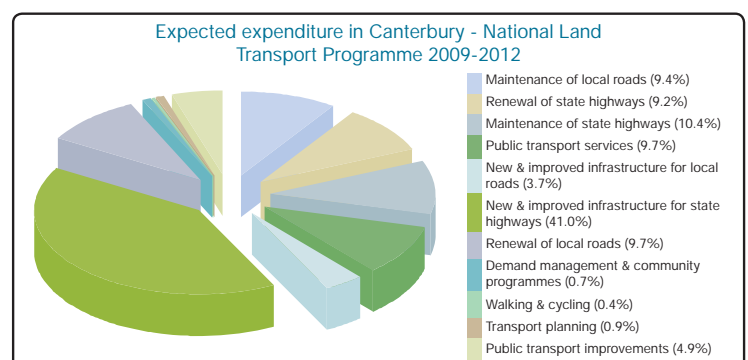
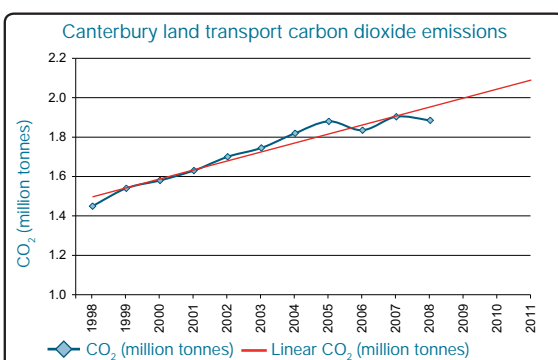
Will you still be driving when you're 65 or older? If not, how will you get around?



Dependence on cars

Canterbury has some of the highest rates of car ownership in the world. Due to the comfort, convenience and relatively low costs offered by cars, we are using them more often and to travel longer distances. While cars offer many benefits, our use and dependence on them has a number of downsides including the social cost of car crashes, economic costs such as fuel and roading expenses, and the environmental costs of air and noise pollution.

How should we minimise the costs and impacts of car use?





Safety

Approximately 40 people die and more than 300 people are seriously injured on Canterbury roads each year. While road deaths have decreased since the 1970s, some of the progress we have made in improving road safety has slowed in recent years.

How can we make our roads safer?



Supporting the region's economy

A transport system that moves goods and people efficiently is essential to support our economy. Over the next 10 to 20 years, it is expected that there will be twice as many freight movements as today. As much of our regional economy is based upon supplying produce to other parts of New Zealand and overseas, it is important that we develop and maintain good transport links.

How do we ensure our transport network best serves our economy's needs into the future?



Transport effects on public health

How we travel has significant effects upon our health. Some forms of transport, particularly walking and cycling, have health benefits. However, our dependence upon cars has increased levels of physical inactivity and obesity. Air and noise pollution from vehicles is also bad for our health. It is estimated that 45 people die in our region every year as a result of vehicle pollution.

How can we ensure the transport system promotes our health and wellbeing?



Environmental impacts

The use of cars has an impact on both the built and natural environment including noise, air pollution, stormwater run-off and greenhouse gas emissions. Government has committed to reducing our greenhouse emissions which include targets for the transport sector.

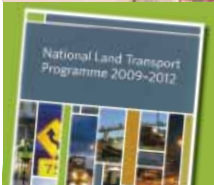
How can we reduce the impacts of our transport system on the environment?



Energy use and the price of fuel

Our transport system is largely reliant on oil. World oil production is expected to decline soon, leading to higher prices and possible supply issues for New Zealand.

How can we improve the energy efficiency of our transport system?



Funding and affordability

Transport investment is essential to support an efficient transport system. However, many of the region's transport plans have not been fully implemented because of a lack of funding.

How can we ensure that our transport plans are affordable?



Land use development and its impact on transport

Urban and rural settlement patterns impact on our transport system. Ensuring that our communities are better connected can help reduce travel demand, limit some of the negative impacts of the transport system and help us meet future challenges.

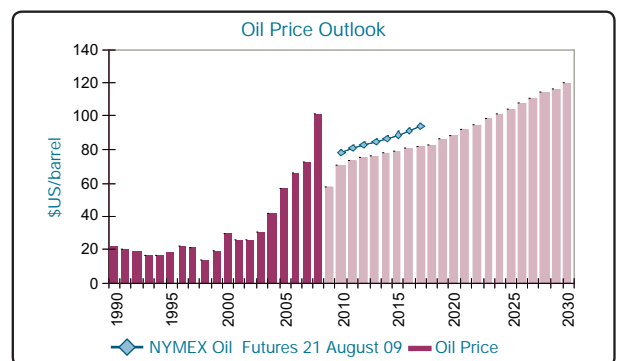
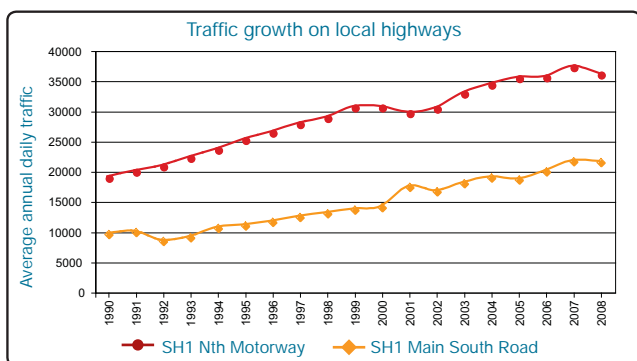
How can we better co-ordinate transport and land use development?



Technological change

New technologies could change the way that we travel. Over the next 30 years we are likely to see innovations such as more energy-efficient vehicles and alternative fuel sources.

How should we make the most of new technologies?



What do you think?

Send us your comments by **9 December 2009**, either by email: transport@ecan.govt.nz, online: www.ecan.govt.nz/transport or by post to:

Freepost 1201
Transport Issues
Environment Canterbury
PO Box 345
Christchurch 8140

Please remember to include your contact details.

Submission form

Name: _____

Address: _____

Organisation (if appropriate): _____

Email: _____

Some key questions we would particularly like your input on are:

1. What do you think are the most important transport issues and challenges for the region?

2. What are the important local issues and challenges that must be managed?

3. What would you like the region's transport system to look like in 2041?

4. Rank the following issues from 1 (high importance) to 10 (moderate importance):

- Population and household changes
- Safety
- Transport effects on public health
- Environmental impacts
- Dependence on cars
- Energy use and the price of fuel
- Supporting the region's economy
- Funding and affordability
- Technological change
- Land use development and its impact on transport
- Other – please specify

Please continue your comments on separate pages if you wish.