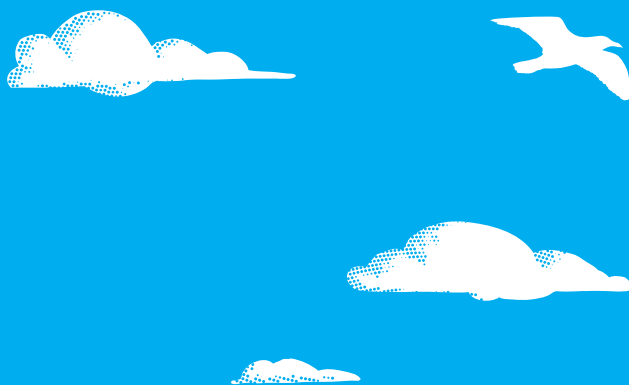


A guide to:

Outdoor fires in residential areas



Outdoor fires include:

fires in an incinerator or container such as a metal drum or brazier.

Background

There are strict restrictions on the lighting of outdoor fires in residential areas because it is likely that a fire will cause a nuisance or contribute to health problems caused by poor air quality.

The rules

Outdoor fires are not allowed without a resource consent in any residentially-zoned area (see exceptions below) or in any Clean Air Zone in Canterbury. Clean Air Zone maps can be found at <http://www.ecan.govt.nz/air-rules>

Heaters and cookers that burn solid fuel or oil and burn with a yellow flame, such as braziers, ambient outdoor fires, chimineas and pizza ovens, are not allowed either.

If you wish to apply for a resource consent to light a fire in a residential area, you will need to pay a deposit, currently \$1,472 (gst inclusive, price correct for October 2010). However, there is no guarantee a resource consent will be granted. Visit our website to find out how to apply for one, or call Customer Services at Environment Canterbury.

Exceptions

Barbecues, hangi and umu are allowed.

Appliances that burn with a blue flame, such as gas patio heaters and gas cookers, are also okay, because they produce hardly any air pollution.

Environment Canterbury rules allow outdoor fires where there is no kerbside recycling collection, green waste depot or transfer station available in the township. Please call Environment Canterbury Customer Services for more information about what's allowed where you live.

Conditions

Where outdoor fires are allowed, the following conditions must be met:

- Check first whether a district or city council fire ban currently applies.
- Burn only untreated wood, paper or card and dry green waste from your own property and up to two adjacent properties.
- Any fire must be 100 metres upwind or 50 metres in any other direction from a boundary or sensitive activity such as a hospital or school.
- Avoid smoke from your fire causing a nuisance beyond your boundary or creating a hazard by reducing visibility on a public road.

More information

Visit www.ecan.govt.nz/air or phone Customer Services on **03 353 9007** from within Christchurch, or **0800 324 636** from elsewhere in Canterbury.

To report a fire nuisance or illegal fire, call the 24-Hour Pollution Hotline on **0800 76 55 88**.

Together we can improve our air