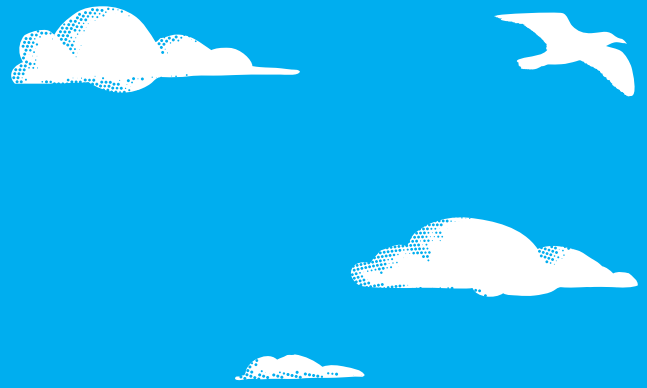


*A guide to:*

# Outdoor fires on rural properties.



*Outdoor fires include:*

*fires in an incinerator or container such as a metal drum or brazier.*

## **Background**

Restrictions are placed on the lighting of outdoor fires in rural areas to reduce fire danger, to manage effects on air quality and to help prevent nuisance.

City or district councils normally apply restrictions in summer or during dry spells through local bylaws to reduce the fire danger to people and property.

Environment Canterbury's clean air rules apply all year round, to ensure that outdoor fires don't contribute to poor air quality or cause a nuisance.

## **What is allowed and where?**

In any rurally zoned area not in any Clean Air Zone, burning crop residue or stubble as well as dry green waste, untreated wood, paper or cardboard is allowed without a resource consent.

On properties zoned rural and in a Clean Air Zone, outdoor fires are only allowed between 1 September and 30 April each year, subject to there being no local authority restrictions in place. Call your city/district council or rural fire authority to check for local restrictions.

Clean Air Zone maps can be found at:  
<http://www.ecan.govt.nz/air-rules>

## **Conditions**

Where outdoor fires are allowed, the following conditions must be met:

- Check first whether a district or city council fire ban currently applies.
- Burn only untreated wood, paper or card and dry green waste from your own property and up to two adjacent properties.
- Any fire must be 100 metres upwind or 50 metres in any other direction from a boundary or sensitive activity such as a hospital or school.
- Avoid smoke from your fire causing a nuisance beyond your boundary or creating a hazard by reducing visibility on a public road.

## **Exceptions**

Until January 2011, the burning of polyethylene agricultural wrap, more often called bale or silage wrap, is allowed without a resource consent, providing the conditions described above are met.

From January 2011, burning silage wrap will become a restricted discretionary activity, which means that a resource consent will be needed.

From January 2014, it will be a prohibited activity.

*Together we can improve our air*

### ***Alternatives to burning bale wrap***

There are now well-established recycling alternatives available. Collection sites and recycling services for bale wrap exist throughout Canterbury. Visit [www.plasback.co.nz](http://www.plasback.co.nz) or [www.agrecovery.co.nz](http://www.agrecovery.co.nz) for more details.

### ***Resource Consents for outdoor burning***

Where a fire requires a resource consent, you will need to make an application and pay a deposit, currently \$1,472 (gst inclusive, price correct for October 2010). However, there is no guarantee a resource consent will be granted. Visit our website to find out how to apply for a resource consent or call Customer Services at Environment Canterbury.

Having an outdoor fire without resource consent where you need one could mean a fine of \$300 for each offence, rising to \$1050 for persistent offending. Illegal commercial burning could mean a fine of \$1000 for a first offence.

### ***More information***

Visit [www.ecan.govt.nz/air](http://www.ecan.govt.nz/air) or phone Customer Services on **03 353 9007** from within Christchurch or **0800 324 636** from elsewhere in Canterbury.

To report a fire nuisance or illegal fire, call the 24-Hour Pollution Hotline on **0800 76 55 88**.