

Canterbury Water Management Strategy (CWMS)

Hurunui – Waiau Zone Committee & LUWQ Project

Ian “Whit” Whitehouse
Zone Facilitator

The logo for Canterbury Water, featuring a stylized blue and yellow wave icon to the left of the text "Canterbury Water".

Canterbury Water

CWMS – a new paradigm

- A shift from effects-based management of individual consents to integrated management of Zones
- Management of cumulative effects of water abstraction and land-use intensification
- Water allocation decisions that address sustainable environmental limits
- Actions to protect and restore freshwater biodiversity, amenity values and natural character
- “Local” people planning locally – Zone and Regional Committees conduit for community discussion and development of solutions
- Solutions deliver environmental, economic, cultural and social outcomes together (“parallel development”)
- Collaboration and partnership

The logo for Canterbury Water, featuring a stylized blue and yellow wave icon to the left of the text "Canterbury Water".

Canterbury Water

CWMS Fundamental principles

First order priorities – environment, customary use, community supplies and stock water

Second order priorities – irrigation, renewable electricity generation, recreation and amenity.

Primary principles – sustainable management, regional approach and tangata whenua

Supporting principles – natural character, indigenous biodiversity, access, quality drinking water, recreational opportunities, and community and commercial use.

CWMS Fundamental Principles are part of the Environment Canterbury (Temporary Commissioners and Improved Water Management) Act 2010.



Parallel development

Water management solutions to achieve economic, cultural, social and environmental outcomes, **together**.

- Committed **targets** across all outcomes:

• Ecosystem health & biodiversity	• Kaitiakitanga
• Braided river natural character, processes & ecological health	• Recreational & amenity opportunities
• Drinking water	• Water-use efficiency
• Irrigated land area	• Energy security & efficiency
• Indicators of regional & national economies	• Environmental limits

- Targets for 2010, 2015 and 2040



Water Management Committees

10 Zone Committees and 1 Regional Committee

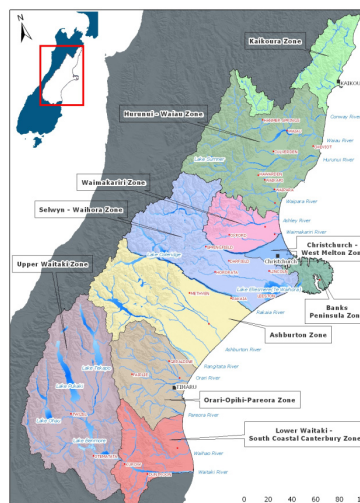
Zone Committees:

Develop strategies, tactics and activities (Zone Implementation Programme) to give effect to the CWMS fundamental principles and targets for the Zone.

Regional Committee:

Focus on infrastructure associated with managing large scale storage and transfer of water across Canterbury, and with related issues such as energy generation and region-level biodiversity issues:

- Strategic assessment of “ponds and plumbing”;
- Funding & financing approaches



Hurunui – Waiou Zone Committee

Membership:

Andrew Harris	David Eder	John Faulkner
Ken Hughey	Michele Hawke	Mike Hogden
Tony Hawker		
David Bedford	Winton Dalley	
Kaikoura runanga	Tuahuriri runanga	

Purpose:

- Develop & facilitate enduring water mgmt solutions that are
 - giving effect to CWMS vision, principles & targets;
 - Developed & implemented with community, stakeholders & water users.
- Make recommendations on an implementation programme of projects and activities to ECan & HDC (to undertake and/or fund work required to achieve solutions).

Hurunui – Waiau Zone Committee

Committee **WILL NOT:**

- Decide resource consents (e.g. for taking, using or discharging water);
- Be involved in Hurunui Water Conservation Order
- Decide Waiau Environmental Flow & Allocation Plan;
- Decide on Hurunui Water Project;
- Determine policies or rules in Regional Plans (or other RMA plans)

Zone Committee & LUWQ project

Water mgmt priorities for Zone likely to include water quality:

- Expect LUWQ to inform Zone Committee, including possible solutions that Committee would discuss with community, water users & stakeholders, and, if buy-in, Committee would recommend through Zone Implementation Programme;
- LUWQ will help Committee understand water quality in the Zone;
- Help achieve CWMS targets (relating to water quality)



CWMS targets and LUWQ project

Ecosystem health/biodiversity & drinking water targets include:

	By 2015	By 2020	By 2040
	<ul style="list-style-type: none"> • Set catchment load limits for nutrients consistent with the principles of the Strategy. • Identify areas not meeting catchment load limits and implement actions to ensure no further enrichment. • Demonstrate in implementation programmes how land will be managed to achieve catchment load limits. • Achieve nutrient efficiency targets for the zone on all new irrigated land. 	<ul style="list-style-type: none"> • Achieve nutrient efficiency targets for the zone on all new irrigated land and 80% of rural properties 	<ul style="list-style-type: none"> • Achieve nutrient efficiency targets on all new irrigated land and 100% of other rural properties. • Average annual nitrate levels in all groundwater wells is below 50% of maximum allowable value for drinking water.

