

Air

but not as
we know it ...

Winter in Canterbury often means still, frosty mornings, blue skies & clear days. However, there is a downside. The winter months bring air pollution to many towns & cities.

EXPLORE THE WEB to learn more about this problem!

SEE IF YOU CAN FILL IN THE BLANKS BELOW:

go to: www.ecan.govt.nz/air

In general Canterbury has _____
air quality. However during the winter
months, levels of _____
cause a serious _____.

There are three main causes of PM₁₀
pollution in Canterbury towns & they are
_____, _____
& _____.

The burning of _____ & _____ for
home heating during winter is the major
offender & will need to be considerably
reduced by the year _____ to meet the
National Environmental Standard set by the
Ministry for the Environment.

WORD BANK

transport PM₁₀ pollution wood
good industry health risk 2013
home heating coal

What can you see in your community?



Take a walk (with an adult) around your neighbourhood just before dark each night for a week. How many smoking chimneys can you see?

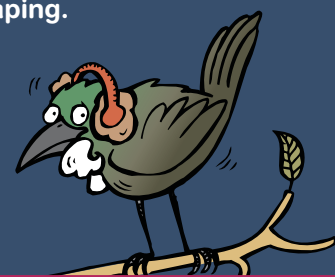
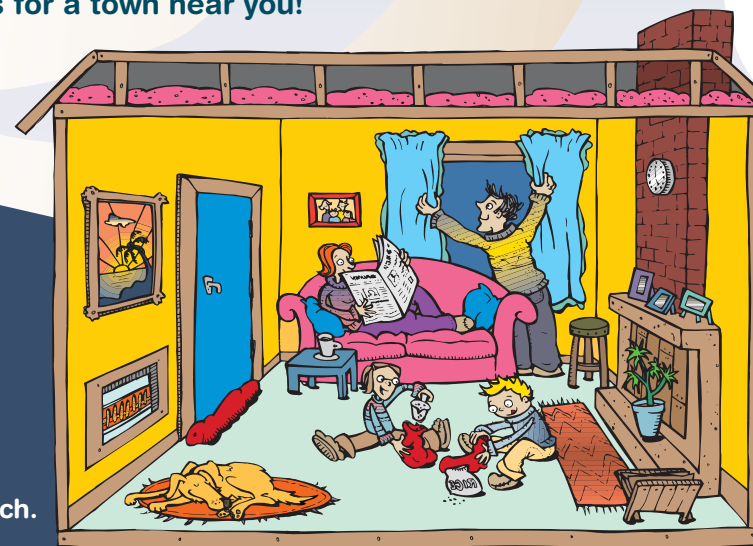
Look at the street lights – how clear do they look? Do they look different on still nights & windy nights?

Is there a link between what you've seen & the air pollution reading on the website the next day? Check out www.ecan.govt.nz/todaysair & read the statistics for a town near you!

Take Action!

What can you & your family do to help?

- ★ **Wear warm clothes** so your house does not have to be heated too much.
- ★ **Insulate, insulate, insulate** – floors, walls, ceilings – & close your curtains at night to stop the heat escaping.
- ★ **Check out www.cleanheat.co.nz**. If you live in Rangiora, Kaiapoi, Christchurch, Ashburton or Timaru you may qualify for subsidies!
- ★ **Stop the draughts** ... find & fill the gaps where draughts are getting through. Make a Door Snake & board up old fire places.
- ★ **Only burn dry firewood** – wood that has been cut & stored allowing time for moisture & sap to dry.



Vice regal visitor drops in on Le Bons Bay School

Banks Peninsula's Le Bons Bay School earlier this year hosted some important New Zealanders – our Governor-General, the Honourable Anand Satyanand and his wife Susan. The school is part of the Enviroschools* programme and works with the Department of Conservation on penguin conservation. During the visit, students presented their work and community efforts on trapping penguin predators, talked about the school's waste reduction programme and Le Bons River stream restoration.

"The Governor-General and his wife were very encouraged by the student and community involvement in the Enviroschools programme," said Department of Conservation educator Phillipa Gardner. "The students showed a high awareness and understanding of sustainability and conservation issues."

*Enviroschools Canterbury is a partnership between Environment Canterbury, Christchurch City Council, Department of Conservation and the Waimakariri, Kaikoura and Timaru District Councils, promoting environmental awareness through education. Contacts: www.ecan.govt.nz/education or email lebons.bay@xtra.co.nz

