



Purpose

The Purpose of the catchment workshops is to **inform** and **support** the development of a preferred approach to managing the cumulative impact of nutrients on water quality within the catchment by:

- taking into consideration the link between land, people and water and the four well beings: Environmental, Economic, Social and Cultural and
- using a multi-stakeholder deliberative approach that enhances collective learning of all the participants

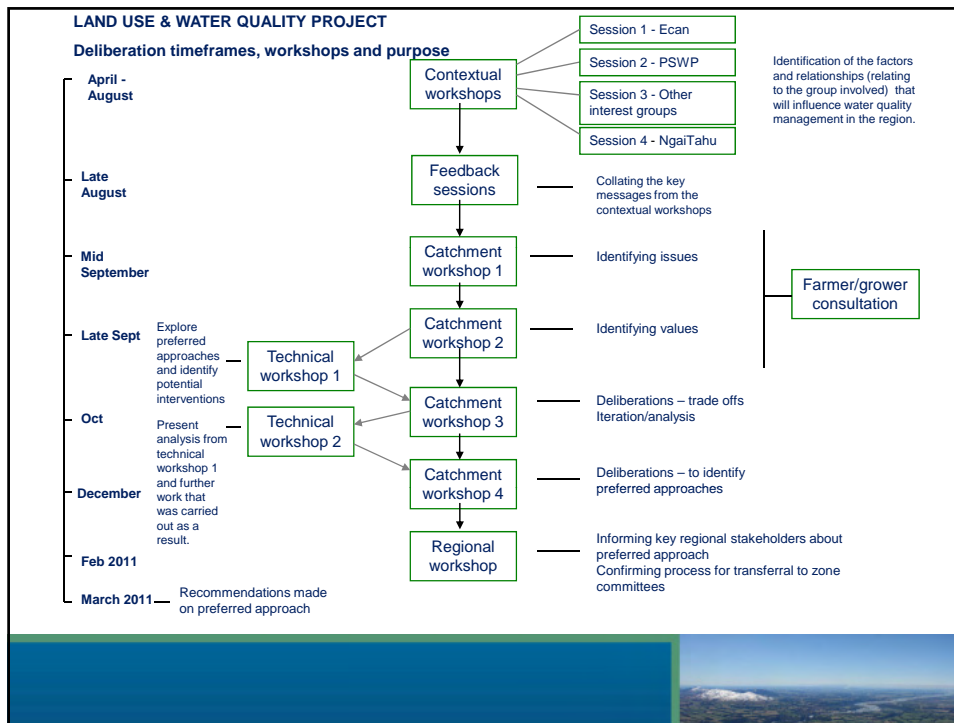


Stakeholders

- The workshops will involve a range of stakeholders chosen from within and outside of the community to represent a range of viewpoints. Criteria for choice are those impacted by water quality state, those impacted by the approaches put in place to manage water quality and those that care.
- Role of the stakeholder groups is to inform a preferred approach recommendation
- Role of the science group is to inform the stakeholders and to use the stakeholder deliberations to identify and fill gaps in knowledge, and to guide future analysis
- The recommendation(s), endorsed by the project governance group, will be presented to the commissioners, and to the ECan Directors. The Commissioners are the decision makers

Stakeholders participating

- Iwi
- Primary sector: pastoral, arable and horticulture
- Rural Woman
- Rural advisors and suppliers
- Environmental NGOs
- Recreationists
- Energy
- Tourism
- Hurunui District council
- Hurunui Zone committee



Workshop 1 Informing and understanding the system Catchment

•Together the stakeholders will develop a mutual understanding of the linkages between water quality, land use, economics, social and cultural outcomes through presentations from the science group describing:

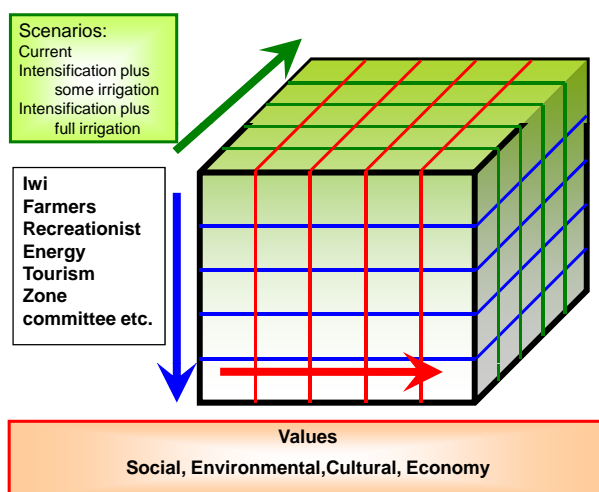
- the hydrology, and land use within the catchment (Tim Davies)
 - the current socio-economic status of the catchment (Simon Harris)
 - the impact of land use on nutrient leakage (Ross Monaghan)
- and
- Development of a map using the stakeholder knowledge of the links between land, water and people in the catchment
 - Introduction to the stakeholders of a set of values for their consideration and guidance to choosing their own, for assessing the impact of future scenarios, nutrient loads and preferred approaches

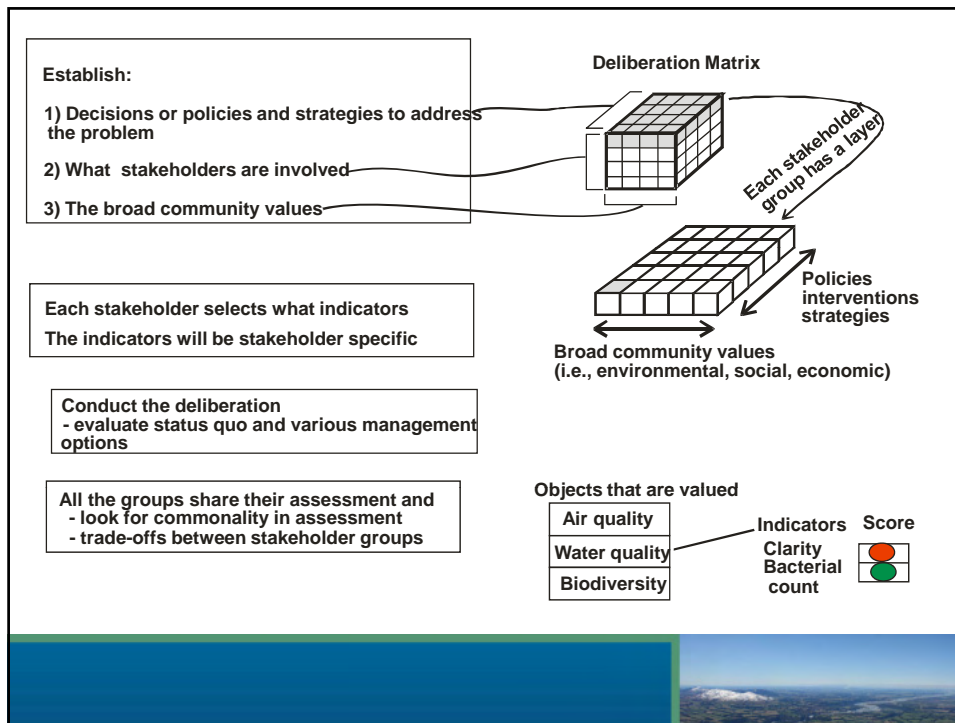
Workshop 2

Deliberating the impact of the current state of land and water and two future land use intensification scenarios:

- The science group will present the stakeholders with information on the current state of land use and two future intensification scenarios
- The stakeholder groups will identify a set of values that they will use to assess the impact of the three states
- The stakeholder groups will then make a judgement on the acceptability of the three states
- The reasons for the choice will be recorded
- This information will allow the different stakeholder judgements to be made transparent and the process allows for in depth conversations that will inform the design of preferred approaches.

Organising the deliberation





Workshop 3 Deliberating the impact of nutrient loads

- Between workshop 2 and 3 the science group will work with the judgements that the stakeholder groups made around the impact of the three states and this will contribute to the development of nutrient loads
- A presentation will be given by the science group on how the loads were obtained and the impact on land use in the catchment
- The stakeholder groups will then make a judgement on the acceptability of the loads across their chosen sets of values
- The Deliberation will make transparent the judgements of stakeholders and where win-win and trade offs exist
- This information will be fed back to the science group

Workshop 4

Deliberating the impact of preferred approaches

- Between workshop 3 and 4 the information will be used by the science group to contribute to the development of potential preferred approach options
- A presentation by the science group will outline the assumptions and reasons for the choice of options
- The stakeholder groups will assess the impact of the preferred approaches on their value sets.
- Together the stakeholder groups will deliberate the outcomes from the assessment.
- This information will be used to inform the recommendation of preferred approaches

