



Legal and Planning Framework

Land Use and Water Quality Project
A collaborative project between Environment Canterbury, primary sector and non-governmental organisations.


Tami Woods
Environment Canterbury

Decision-making under RMA

Part II of the Act sets out its governing purpose and principles which infuse its decision-making and policy-formulating procedures. Of these, the purpose (being the promotion of sustainable management as defined in s 5) is paramount.

High Court: Falkner v Gisborne District Council [1995]

Land Use and Water Quality Project

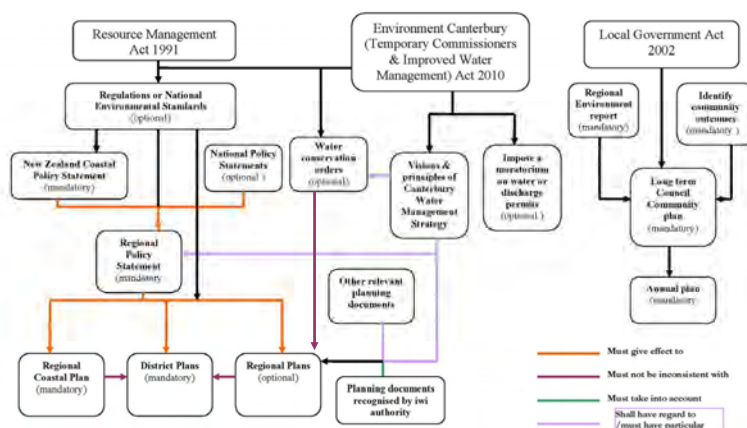


Sustainable Management

Manage the use, development, and protection of natural and physical resources in a way, or at a rate, which enables people and communities to provide for their social economic and cultural wellbeing and for their health and safety while:

- (a) Sustaining potential of resources to meet future generations
- (b) Safeguarding life supporting capacity of air, water soil and ecosystems
- (c) Avoiding remedying, or mitigating any adverse effects of activities on the environment

Legal and Planning Framework



CWMS

Vision

- To enable present and future generations to gain the greatest social, economic, recreational and cultural benefits from our water resources within an environmentally sustainable framework.

Primary Principles

- Sustainable Management
- Regional Approach, includes:
 - Planning guided by:
 - 1st order priority considerations: Environment, customary use, community supplies and stock water
 - 2nd order priority considerations: Irrigation, renewable electricity generation, recreation and amenity
 - Consistent regulatory approach
- Kaitiakitanga

Proposed Natural Resources Regional Plan

- Sets water quality objectives with measurable outcomes for different 'types of rivers and lakes and groundwater'.
- Seeks where outcomes are being met that water quality be maintained, where not - managed to achieve.