

# Wholly Water

ECan Laboratory's Newsletter

## Who we are

ECan Laboratory is an independent business unit within Environment Canterbury guaranteeing confidentiality to our clients.

## Where to Park

We have customer parking at the back of our building off Chester Street West, or via Kilmore Street.

10 minute parking on the street outside our building.

There are two 10 minute offstreet parks off Kilmore Street.

## Automation helps reduce prices

Read further to find out about our new technology.

## Turnaround times

We aim for 10 working days to complete your analyses.

## Issue No. 1

October 2005

Welcome to the first Newsletter of ECan Laboratory. We thought it was about time we introduced our staff and outlined what they do for you.

Also included is our latest Price List for your information.

We plan on doing this newsletter quarterly – any suggestions re content and delivery (e.g. by email) would be appreciated.

## FREQUENTLY ASKED QUESTIONS

**Q** *Are you IANZ Accredited or a Ministry of Health recognised Laboratory?*

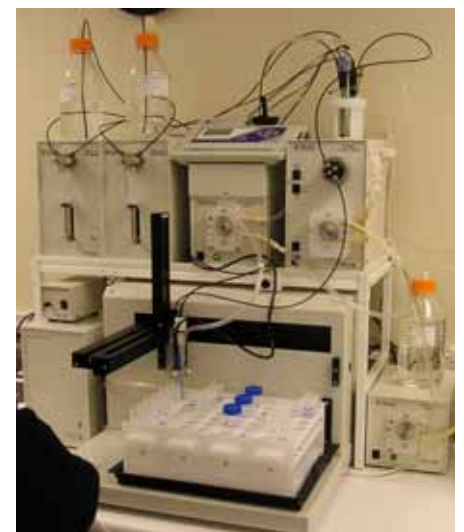
**A** Yes – we are 21 this year. We have been Accredited by IANZ since 1984. How's that for experience?

**Q** *Do you do Drinking Water tests?*

**A** Yes – we do test water for potability. We provide a Drink Water kit which contains 3 bottles and sampling instructions. The tests we do are: pH, Turbidity, Nitrate Nitrogen, Iron, Manganese, Copper, Arsenic, Hardness (Calcium/Magnesium), and E.coli. The cost per test is \$126 + GST.

## AUTOTITRATOR

Our Mantech Autotitrator is the first of this type in New Zealand. We have set it up with an autosampler to measure four parameters on the same sample i.e. pH, conductivity, alkalinity and turbidity (these are usually manually intensive tests). For this reason, and other efficiency gains, we have been able to pass on some lower prices to our clients.



## FARM DAIRY WATER TESTING

This is a service we are qualified to provide. See our price list for Turbidity and E.coli costs.

## Supply of Bottles

We have a range of bottles to suit your specific water samples, please contact us for more information.

Please contact us on: (03) 353 9720 to discuss discounts on large or regular sampling runs.

"Never test the depth of water with both feet."



**Sue Steel**  
Laboratory  
Administrator



**Paul Woods**  
Laboratory  
Supervisor and  
Senior Chemist



**Bridget Gould**  
Senior Chemical  
Technician



**Frances Kenny**  
Chemical  
Technician



**Andrew Latimer**  
Microbiologist



**Fay Farrant**  
Microbiologist



**Sue Seymour**  
Laboratory Business Unit  
Manager

PRICE LIST 2005 - 2006					
	Services Provided	ex GST		Services Provided	ex GST
MICRO	Faecal Coliforms (FC)	\$23	NUTRIENTS	Ammonia Nitrogen (NH3N)	\$12
	Coliforms TC/FC by MPN	\$30		Nitrate + Nitrite Nitrogen (NNN)	\$12
	Escherichia coli - (E.coli)	\$25		Dissolved Reactive Phosphorus (DRP)	\$12
	Total Coliforms & E.coli (T.col/E.coli)	\$25		Total Nitrogen (TN)	\$21
	Pres-Ab Total Coliforms & E.coli (P/A)	\$15		Total Phosphorus (TP)	\$21
	Enterococcus (MEI - Ent.)	\$23		Nitrate Nitrogen (NO3N) - Dirty samples	\$24
	Heterotropic Plate Count @ 35°C (HPC)	\$21		Nitrite Nitrogen (NO2N)	\$12
	Swimming Pool Tests - (4 analyses) (Staph., Pseudomonas, Faecal Coliforms, HPC)	\$60		Total Kjeldahl Nitrogen (TKN)	\$34
OTHERS	Chlorophyll A (plankton)	\$30	ANIONS CHEM	Dissolved Inorganic Nitrogen (DIN)	\$24
	Chlorophyll A (stone)	\$30		Fluoride (F)	\$10
	Ash free dry Wt/Loss on ignition	\$17/\$35		Chloride (Cl)	\$10
	Dissolved Oxygen by Meter/Winkler (DO)	\$6		Bromide (Br)	\$10
	Biological Oxygen Demand (BOD)	\$35		Nitrate Nitrogen (NO3N) - GW	\$12
	Biological Oxygen Demand (Soluble) (BOD)	\$70		Ortho-Phosphate (PO4)	\$10
	Rhodamine (dye tracing)	\$10		Sulphate (SO4)	\$10
	Colour	\$10		Boron (B)	\$15
	% Transmission	\$10		Reactive Silica (RSI)	\$12
	Dissolved Organic Carbon (DOC)	\$25		METALS CHEM	Calcium (Ca) Chromium (Cr) Copper (Cu)
CHEMISTRY	pH	\$6	Chrome (6)/Chrome(3) speciation		POA
	Conductivity (also Salinity)	\$9	Iron (Fe) Lithium (Li)		\$10 ea
	Turbidity	\$9	Magnesium (Mg) Manganese (Mn)		\$10 ea
	Total Suspended, Dissolved & Vol. Solids	\$17, \$17, +\$4	Potassium (K) Sodium (Na)		\$10 ea
	Acidity to pH 8.3	\$13	Strontium (Sr) Zinc (Zn)		\$10 ea
	Alkalinity as (HCO3) or as (CaCO3)	\$13	Total Hardness (Ca + Mg Hardness)	\$20	
	Free CO2 - Calc only	\$5	Ion Balance	\$0	
	Langelier Saturation Index	\$50	TRACE	Arsenic (As) Chromium (Cr)	\$24 ea
	Absorbance 270 & 400nm	\$10		Aluminium (Al) Cadmium (Cd)	\$24 ea
	Chlorine (residual or free, total combined)	\$25		Copper (Cu) Lead (Pb) Nickel (Ni)	\$24 ea