

Waimakariri River Regional Park Kaiapoi Island

About:

Just 10 kilometres from the city, the Kaiapoi Island section of the Waimakariri River Regional Park is a valuable and unique natural recreational area where you can relax and enjoy a range of activities from picnicking, mountain biking, walking to running.

Access:

The main entrance to Kaiapoi Island is off the Main North Road if you are coming from Christchurch. There is also access along the stopbanks by foot or cycle from Raven Quay, Kaiapoi (see map).

History:

Prior to European settlement, the Waimakariri River had split into two main channels in the lower reaches forming a number of islands about eight kilometres from the coast.

Kaiapoi Island was the largest of these and covered some 2800 ha.

Maori called the island Te Rakai a Hewa 'the adornment of the deluded one'. The island was an important site, both spiritually and as an education facility, due to the nearby settlements.

In the early 1850's, European settlers were moving into North Canterbury. In 1854, a pastoral lease of 5000 acres of the island was taken up by William Smith. The lease was transferred almost immediately to George Day and then became known as "Day's Run".

As the settlement on the north east corner of the island grew, the town and the island became known by the areas Kai Tahu (Ngai Tahu) name, Kaiapoi, after the pa located nearby at the present day Woodend.

Today, the lower reaches of the Waimakariri River are highly modified and bear little resemblance to how it looked 150 years ago. The present day Clarkville marks the centre of the former island.

For more information visit
www.ecan.govt.nz/waimakpark

Poynter Nature Reserve

The focus for recreation at Poynter Nature Reserve is on the nature walks, open grassland and river margin. Cycle and walking tracks link to upstream destinations and to areas outside the park including the Kaiapoi township.

The section has river and coarse fishing, offers great river bird viewing and a variety of picnic settings.

Wright's Cut

Here the focus is on water based and river margin activities. The section has two large river fans which allow access to the water's edge for swimmers, anglers, whitebaiters and kayakers.

The launching ramp and surrounds provide for jet boats.

The central grass area between the bridges acts as a start/finish point for cyclists and walkers using the looped tracks.

Day's Run

Day's Run offers a large open grassland area and use of the Smith Stream.

The trail bike area caters for a wide range of skills and user types, with an area set aside for family group use.

Smith Stream is great for walkers, mountain bikers and picnickers.

Remember

- River levels can rise rapidly and never enter dirty floodwater
- Off road driving and horse riding are not permitted at Kaiapoi Island
- Road rules apply within the park
- Check the notice board at the park entrance for up to date information
- You can contact the rangers on 353 9725.

58 Kilmore Street
PO Box 345
Christchurch

Web: www.ecan.govt.nz
Phone: 03 365 3828
or 0800 EC INFO

This brochure was printed on 100% recycled elemental chlorine free paper. E84 Dec07.

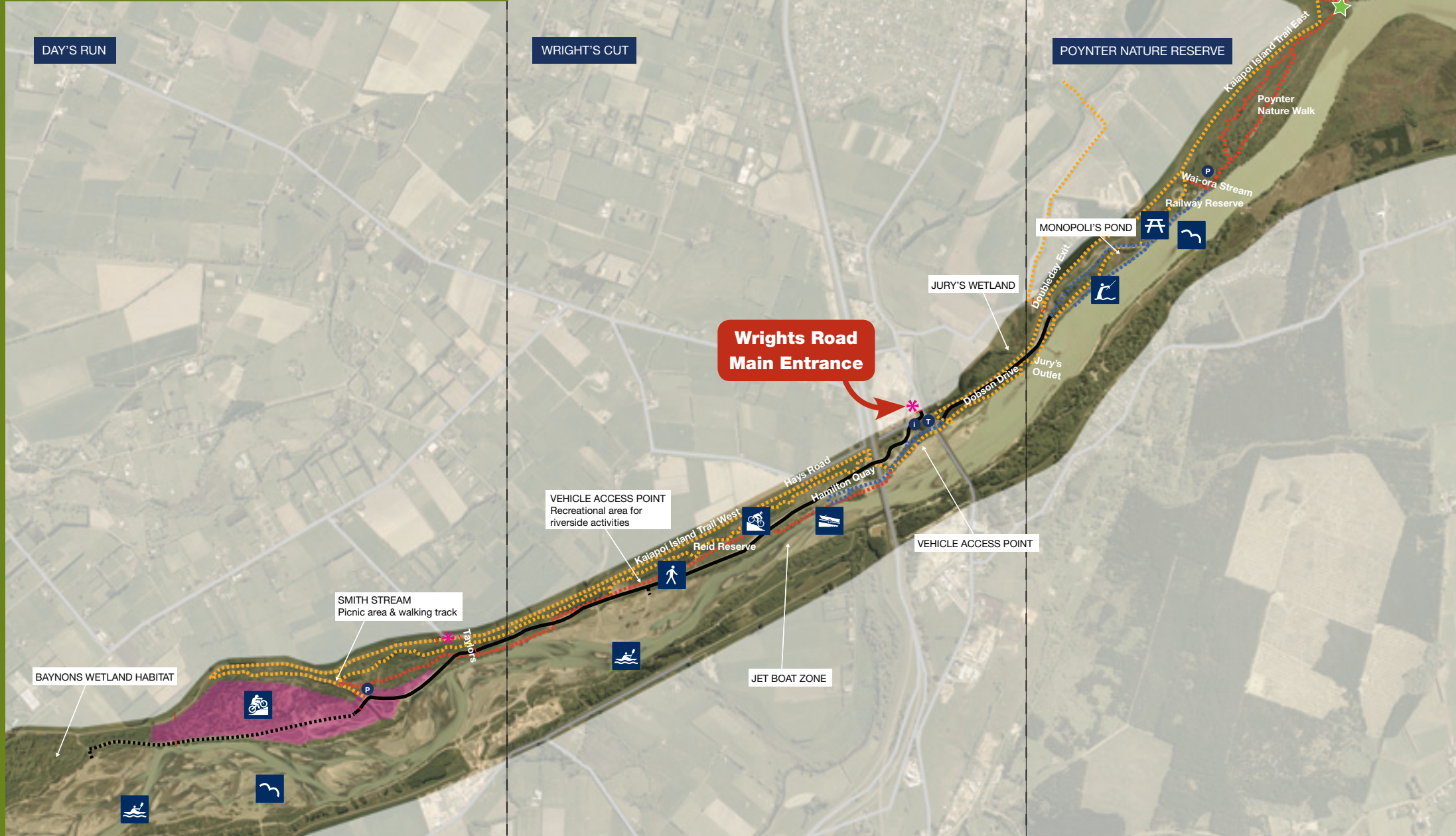
Kaiapoi Island



Waimakariri River Regional Park



Kaiapoi Island Map



Finding your way

- i Information
- P Parking
- T Toilets
- * Entry point
- ★ Feature
- Trail bike area
- Cycle/walkway
- Walking track
- Recreation vehicles
- Shingle extraction/recreation vehicles
- Shingle extraction vehicles only



Waimakariri River Regional Park