

winter air report

Rangiora

October 2006

Rangiora's smog creates major difficulties for people with respiratory problems and ruins the image of clean, green New Zealand. The source of the problem, however, is not motor vehicles or industry – around 80% of the particles discharged into our air are estimated to come from solid fuel burning for home heating.

2013 and beyond

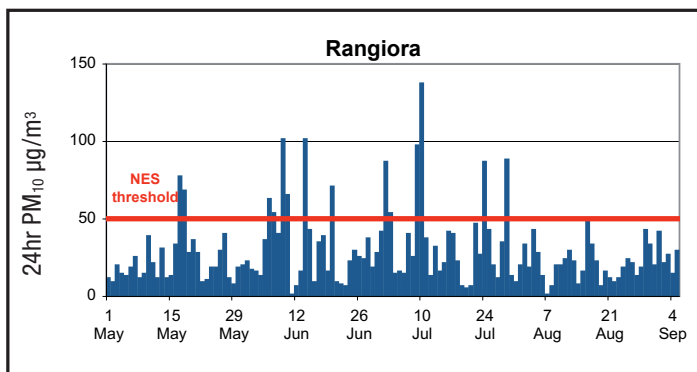
Winter air pollution from home fires is a real problem. It damages the image of Canterbury and seriously affects the health and well-being of its people. The National Environmental Standards for Air Quality (NES) require improvement in air quality between now and 2013 if we are to avoid potential limitations on our regional economy.

The NES requires all regions to have no more than one high pollution day per year after 1 September 2013. The NES also includes woodburner standards. Environment Canterbury's Proposed Air Plan is one way of working towards achieving this requirement.

Winter 2006

This winter, Rangiora had 14 high pollution days to the end of September. This number is the highest number in the four years that Rangiora has been monitored. In previous years the number of high air pollution days ranged from 6 to 11 days. The highest concentration this winter was 136 compared to the highest in previous years of 99.

The number of high pollution days that occur each winter depends on the weather as well as how much pollution is going into the air. Calm weather experienced by inland towns this winter played a part in the higher number of air pollution days in Rangiora.



Guide to graph: NES is the National Environmental Standards threshold and is set at 50 micrograms of particulate per cubic metre of air which should not be breached more than once a year by 2013.

Keeping warm

Canterbury residents can now easily access information about the rules for open fires, woodburners and other solid fuel burners.

A new brochure, "The rules for keeping warm in Canterbury", has been produced by Environment Canterbury. The brochure includes information about properties inside and outside Christchurch Clean Air Zones, with some differences for those smaller or larger than 2 hectares. There is also information about saving money on running costs and what types of wood to use.

For a copy of the brochure, please call Environment Canterbury's Customer Services on 03 353 9007 or 0800 324 636, or visit www.ecan.govt.nz/air.

The rules for keeping warm in Canterbury

If you live in Canterbury these are the rules for open fires, woodburners and other solid fuel burners.



What's happening with the Air Plan?

Submitters on Chapters 1-3 of the Proposed Canterbury Natural Resources Regional Plan (Proposed Air Plan) have had the opportunity to be heard. These hearings were adjourned in January 2006 and the Hearing Commissioners are expected to report to Council with their recommendations in late 2006. Council will then notify its decisions in 2007. If there are no appeals, the Air Plan will be treated as operative.

Environment Canterbury

0800 EC INFO

0800 324 636

www.ecan.govt.nz/air

ecinfo@ecan.govt.nz

