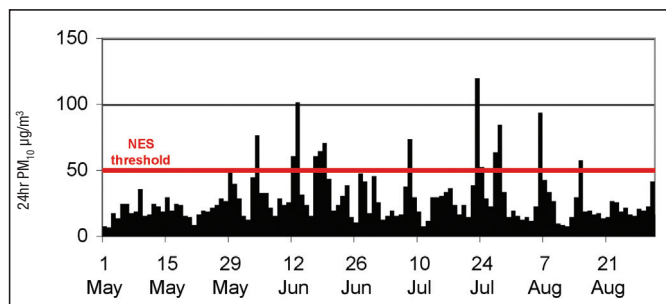


winterairreport - Christchurch

May - August 2007

Winter-time air pollution affects the way people view Christchurch. Solid fuel fires create 80% of the city's air pollution, compared to 10% from motor vehicles. Environment Canterbury is working with your local communities and council to clear the air.



NES is the National Environmental Standards threshold and is set at 50 micrograms of particulate per cubic metre of air. Only one exceedance of this level is allowed after 1 September 2013.

Christchurch's air pollution this winter

Christchurch had 13 high air pollution nights this winter to 31 August 2007, the lowest number since Environment Canterbury started monitoring the city's air quality in 1988. The maximum concentration recorded at the representative site of St Albans was 119 on July 23. Last winter there were 27 high air pollution nights at the St Albans site. The worst winter was 2001 when there were 51 high pollution nights. In each of the years from 1999 to 2002 the highest concentration was greater than 200.

The number of high pollution nights each winter depends on the weather as well as how much air pollution is produced. The worst pollution usually happens after sunset on clear, calm and cold nights, often when a frost is forecast. Cloudy evenings, fewer frosts and windier weather over the town contributed to the lower number of air pollution readings in Christchurch this winter, combined with a reduction in the number of woodburners being used. In the last four years, Environment Canterbury's Clean Heat Project has helped convert over 10,000 homes to cleaner heating options.

2013 – just six years away!

Only one high pollution night a year is the target of the National Environmental Standards for Air Quality (NES). The deadline for this is 1 September 2013 – just six years away! We all need to work together to make this happen. Converting your home to clean heat appliances, burning dry wood and insulating your home makes all the difference.

Air pollution damages health

Air pollution is damaging to people's health. Babies, young children, people with breathing problems and older people are most affected by the tiny, invisible pollution particles that lodge in people's lungs – even indoors when the doors and windows are shut. We need to clear the air for everybody's sake.

For more information about Environment Canterbury's Air Plan, visit www.ecan.govt.nz/Air/AirPlan.

Clean Heat Project makes a difference

More than 10,000 Christchurch residents have already converted to clean heat options for their home. Now is the time to book your clean heat assessment with Environment Canterbury's Clean Heat Project so you will be ready for next winter. At this time of year waiting times for appointments are very short. The project provides financial assistance to homeowners and landlords to make the change to cleaner forms of heating. If eligible, options include a full or partial heating and insulation subsidy, a landlord subsidy or an interest-free loan for insulation and heating which is paid back through the homeowner's rates bills. Register now for the Clean Heat Project by visiting www.cleanheat.org.nz or telephone 353 9276.

Knocking on Christchurch doors

As part of the Clean Heat Project, one of Environment Canterbury's Clean Heat Project team is presently visiting homeowners in Woolston, one of the most polluted suburbs in Christchurch. If you want to find out when someone may be visiting your area, call now on 353 9276.

Building or renovating: think clean heat and insulation

If you are renovating or building now is the time to think about including clean heat options and insulating ceilings, floors and walls to keep your house warm. More than 40% of any heat generated inside your home escapes through the ceilings. Windows and doors should also be sealed for draughts and curtains closed at sunset to retain as much heat as possible.

A wide range of clean heat options to suit you

If you are considering changing to cleaner heating options for your home, the list of authorised heating appliances has been updated. Heat pumps and pellet fires are a popular choice for many Christchurch residents, along with low-emission woodburners. For more information visit Environment Canterbury's website www.ecan.govt.nz/approved-woodburners. By clicking on a map of your area you will see a list of all heating appliances that can be installed in your home.

You can now also easily access information about the rules for open fires, woodburners and other solid fuel burners. "The rules for keeping warm in Canterbury" contains information about whether you need a resource consent for your solid fuel burner and there are also ideas about how you can save money on your running costs and what types of wood to use. For a copy of the brochure please call Environment Canterbury Customer Services on 353 9007 or visit www.ecan.govt.nz/air.

The rules for keeping warm in Canterbury

If you live in Canterbury these are the rules for open fires, woodburners and other solid fuel burners.

