

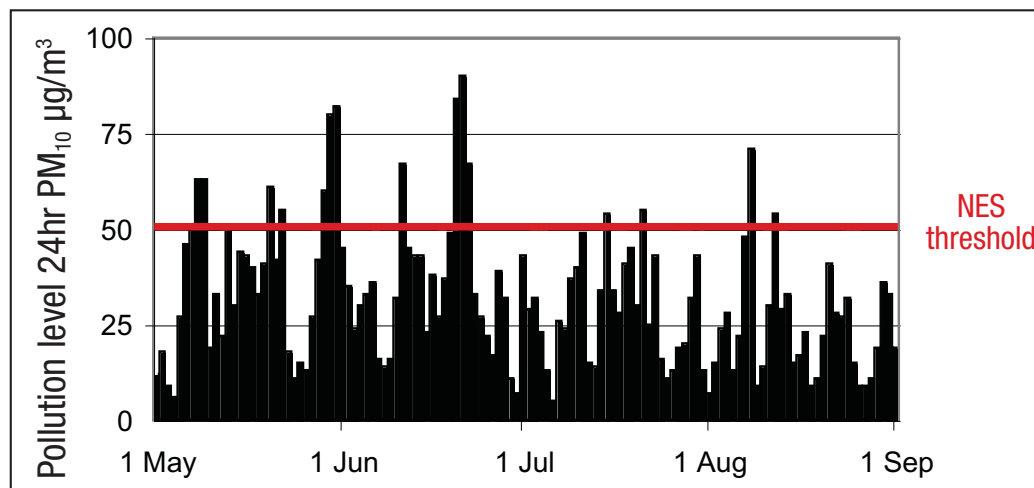
Every winter high air pollution levels affect the health of many Ashburton residents. Old woodburners and open fires are the main cause of this pollution which typically happens on cold, still nights.

So how bad was the air pollution this year?

### Air pollution levels

The number of days with high air pollution was slightly higher than last winter (15 days in 2008, 13 in 2007). In the past Ashburton has had between 13-25 high pollution days a year. The windy and cloudy weather in June and July, typically the months with the highest air pollution levels, kept the number of high pollution days down this year.

The highest concentration was  $90\mu\text{g}/\text{m}^3$ , the same as last winter. The National Environmental Standard (NES) for Air has set a maximum of  $50\mu\text{g}/\text{m}^3$  and only one exceedence per year is allowed by 2013.



### The future for woodburners and open fires

New rules restricting the use of woodburners and open fires have been proposed and you can only install an MfE approved burner.

Environment Canterbury is working with local councils and communities to clear the air.

For more information about financial assistance available, visit [www.cleanheat.org.nz](http://www.cleanheat.org.nz) or call 0800 329 276