

winterairreport Timaru, Geraldine, Waimate

May - August 2008

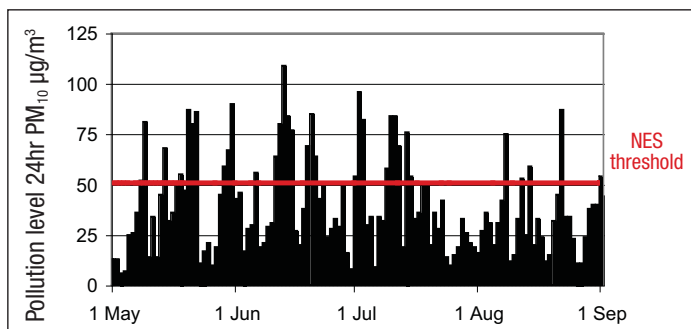
Every winter high air pollution levels affect the health of many Timaru, Geraldine and Waimate residents. Old woodburners and open fires are the main cause of this pollution which typically happens on cold, still nights.

So how bad was the air pollution this year?

Timaru

The number of days with high air pollution was slightly higher than last winter (37 days in 2008, 36 in 2007). In the past Timaru has had between 33-50 high pollution days a year.

The highest concentration was $109\mu\text{g}/\text{m}^3$ compared to $120\mu\text{g}/\text{m}^3$ last winter. The National Environmental Standard (NES) for Air has set a maximum of $50\mu\text{g}/\text{m}^3$ and only one exceedence per year is allowed by 2013.



Geraldine

The number of days with high air pollution was higher than last year (6 days in 2008, 2 in 2007). In the past Geraldine has had between 2-5 high pollution days a year.

The highest concentration was $72\mu\text{g}/\text{m}^3$ compared to $55\mu\text{g}/\text{m}^3$ last winter. The National Environmental Standard for Air has set a maximum of $50\mu\text{g}/\text{m}^3$ and only one exceedence per year is allowed by 2013.

Waimate

In contrast to last year, Waimate experienced a number of high pollution days (7 days in 2008, none in 2007). In the past Waimate has had between 1-10 high pollution days a year.

The highest concentration was $60\mu\text{g}/\text{m}^3$ compared to $50\mu\text{g}/\text{m}^3$ last winter. The National Environmental Standard for Air has set a maximum of $50\mu\text{g}/\text{m}^3$ and only one exceedence per year is allowed by 2013.

Environment Canterbury is working with local councils and communities to clear the air.

For more information about financial assistance available, visit www.cleanheat.org.nz or call 0800 329 276