

**Plan Change 5  
to the  
Natural Resources Regional Plan**

**Operative 16 June 2012**

## CANTERBURY REGIONAL COUNCIL

### **Plan Change 5 to the Natural Resource Regional Plan**

Prepared under the Resource Management Act 1991

14 June 2012

Report Number R12/54

ISBN

978-1-927210-62-8 (Hard Copy)

978-1-927210-63-5 ( CD)

978-1-927210-64-2 (web page)

I hereby certify this is a true and correct copy of Plan Change 5 (previously known as Variation 17) to the Natural Resources Regional Plan prepared by the Canterbury Regional Council, at it's meeting on the 31<sup>st</sup> May 2012.

This document is part of a statutory regional plan prepared by the Canterbury Regional Council in accordance with the requirements of the Resource Management Act 1991.

The Plan Change will be publicly notified on 8<sup>th</sup> June 2012 and will become part of the Natural Resources Regional Plan on 16<sup>th</sup> June 2012

The Common Seal of Canterbury Regional Council was fixed in the presence of:



**Bill Bayfield**  
Chief Executive  
Canterbury Regional Council



**Dame Margaret Bazley**  
Chair  
Canterbury Regional Council

31 May 2012

I hereby certify this is a true and correct copy of Plan Change 5 (previously known as Variation 17) to the Natural Resources Regional Plan prepared by the Canterbury Regional Council, at it's meeting on the 31<sup>st</sup> May 2012.

This document is part of a statutory regional plan prepared by the Canterbury Regional Council in accordance with the requirements of the Resource Management Act 1991.

The Plan Change will be publicly notified on 8<sup>th</sup> June 2012 and will become part of the Natural Resources Regional Plan on 16<sup>th</sup> June 2012

The Common Seal of Canterbury Regional Council was fixed in the presence of:



**Bill Bayfield**  
Chief Executive  
Canterbury Regional Council



**Dame Margaret Bazley**  
Chair  
Canterbury Regional Council

**31 May 2012**

After the proposed Variation 17 and Waipara Plan were notified, the proposed NRRP became operative, as of the 11 June 2011. This meant Variation technically became a Plan Change. But because it got so far through the process the council continued to call it a variation as changing the name would cause confusion.

Variation 17 has now gone through the hearing process, and had no appeals, it has been decided to correct its name to Plan Change 5.

Plan Change 5 was developed to provide clarity as to how the Natural Resources Regional Plan (NRRP) and the standalone proposed Waipara Catchment Environmental Flow and Allocation Regional Plan (hereafter Waipara Plan) would work together. Plan Change 5 amends NRRP Chapter 5 so that the NRRP provisions for taking, use, damming or diverting of surface water or groundwater do not apply in the Waipara catchment. It also amends tables Chapters 4, 6 and 7 to explain the relationship between existing plans and the NRRP.

## Chapter 4

*A new row has been added to Table WQL4 Relationship between existing regional plans and water conservation orders and the NRRP Chapter 4, as follows:*

Waipara Catchment Environmental Flow and Allocation Regional Plan	<p>Waipara Catchment Environmental Flow and Allocation Regional Plan provides for the taking, use, damming or diverting of surface water or groundwater within the Waipara catchment. Chapter 4 applies within this area.</p> <p>Where any activity is expressly addressed in the Waipara Catchment Environmental Flow and Water Allocation Plan the provisions in that plan apply within the Waipara Catchment, otherwise the NRRP applies.</p>
---	--

## Chapter 5

*NRRP Chapter 5, Section 5.6 Regional Rules, page 5-130 has been amended by adding the following words to the end of the second sentence “or the activity and the catchment are listed below.” The second sentence now reads:*

“Each rule in the index table below applies everywhere in the region landward of the Coastal Marine Area unless the area covered by the rule is specifically limited to the area identified in the left hand column of the Index adjacent to a rule, or the activity and catchment are listed below.

*Two new sentences have been added after sentence two, which now reads:*

### **“Activities and Catchments not covered by Chapter 5 of the NRRP:**

(a) The taking, use, damming or diverting of surface water or groundwater within the area shown as the Waipara Catchment in Schedule WQN 18. In the Waipara Catchment, the provisions of the Waipara Catchment Environmental Flow and Water Allocation Plan apply to these activities, except where listed below. Where an activity is expressly provided for in

the Waipara Catchment Flow and Allocation Plan, the provisions in the Waipara Plan shall apply in the Waipara Catchment. For other activities, the provisions in the NRRP apply.

**Exceptions:**

Notwithstanding (a) above, the following provisions of Chapter 5 of the NRRP apply in all or part of the Waipara Catchment:

- NRRP rules WQN 27 to 28 for the planting of plantation forests in flow-sensitive catchments continue to apply in the Waipara Catchment.
- The NRRP Chapter 5 provisions apply to the taking or use of groundwater within that part of the Waipara Catchment shown as being part of the Culverden Groundwater Allocation Zone in Schedule WQN 18

*A new row has been added to Table WQN3: Relationship between existing regional plans and NRRP Chapter 5, as follows:*

Waipara Catchment Environmental Flow and Allocation Regional Plan	<p>Within the area shown as the Waipara Catchment in Schedule WQN18; The provisions of Chapter 5 do not apply to the taking, use, damming or diverting of surface water or groundwater, except for the taking or use of groundwater within the area shown as being part of the Culverden Groundwater Allocation Zone. The NRRP rules WQN 27 to WQN 28 for the planting of plantation forests in flow-sensitive catchments continue to apply in the Waipara Catchment; as do the provisions for taking or use of groundwater within the Culverden Groundwater Allocation Zone.</p> <p>Where any activity is expressly addressed in the Waipara Catchment Environmental Flow and Water Allocation Plan the provisions in that plan apply within the Waipara Catchment, otherwise the NRRP applies.</p>
---	--

## Chapter 6

*A new row has been added to Table BLR1: Relationship between existing regional plans and NRRP Chapter 6, as follows:*

Waipara Catchment Environmental Flow and Allocation Regional Plan	<p>Waipara Catchment Environmental Flow and Allocation Regional Plan (WCEFARP) provides for the taking, use, damming or diverting of surface water or groundwater within the Waipara catchment. Chapter 6 applies within this area.</p> <p>Where any activity is expressly addressed in the Waipara Catchment Environmental Flow and Water Allocation Plan the provisions in that plan apply within the Waipara Catchment, otherwise the NRRP applies.</p>
---	--

--	--

## Chapter 7

*A new row has been added to Table WTL1 Relationship between existing regional plans and NRRP Chapter 7 as follows:*

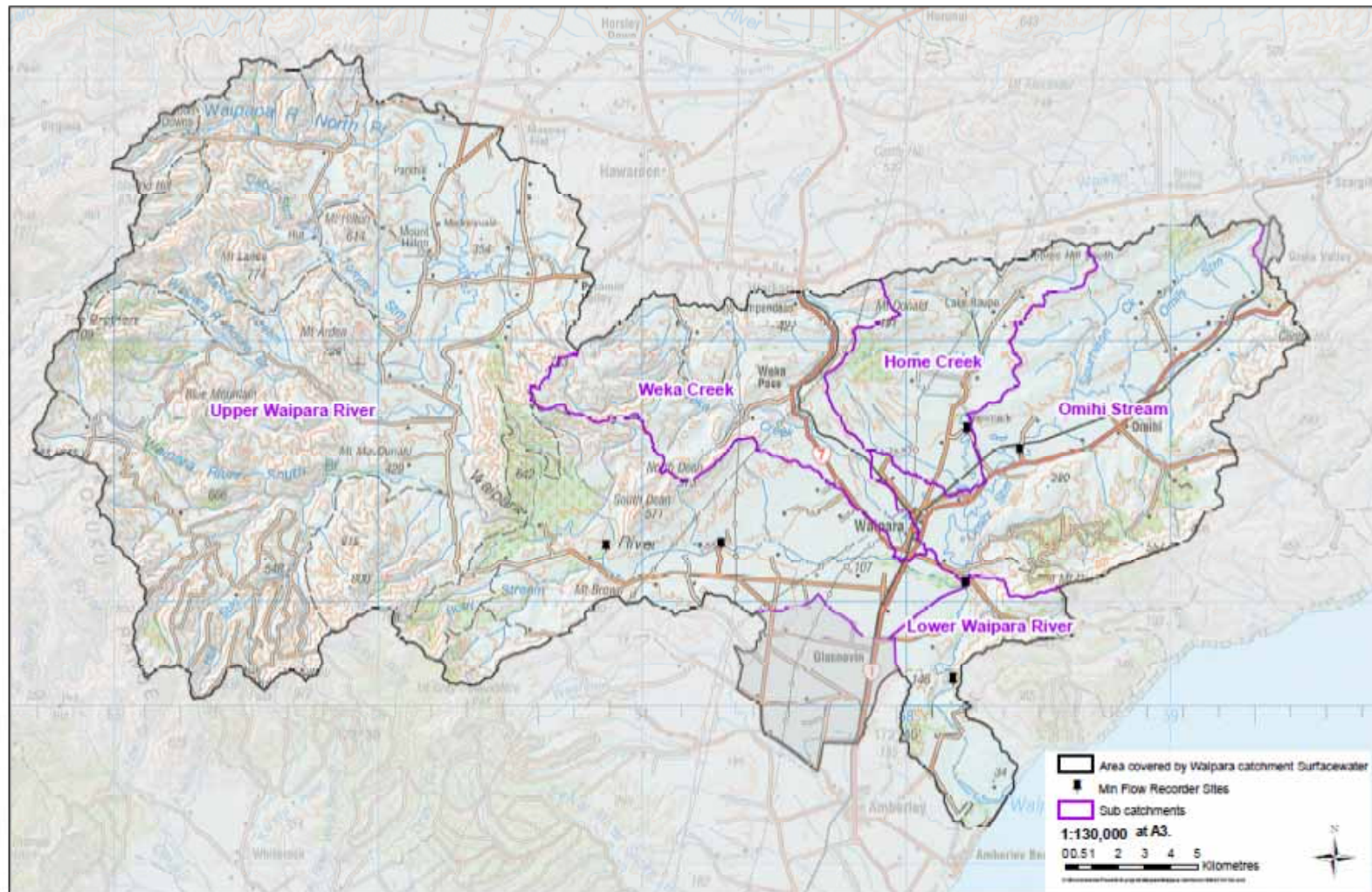
Waipara Catchment Environmental Flow and Allocation Regional Plan	<p>Waipara Catchment Environmental Flow and Allocation Regional Plan (WCEFARP) provides for the taking, use, damming or diverting of surface water or groundwater within the Waipara catchment, but not with the classification of wetlands or other activities that may affect wetlands. Therefore Chapter 7 applies within this area.</p> <p>Where any activity is expressly addressed in the Waipara Catchment Environmental Flow and Water Allocation Plan the provisions in that plan apply within the Waipara Catchment, otherwise the NRRP applies.</p>
---	--

## New Schedule WQN 18 in Chapter 5

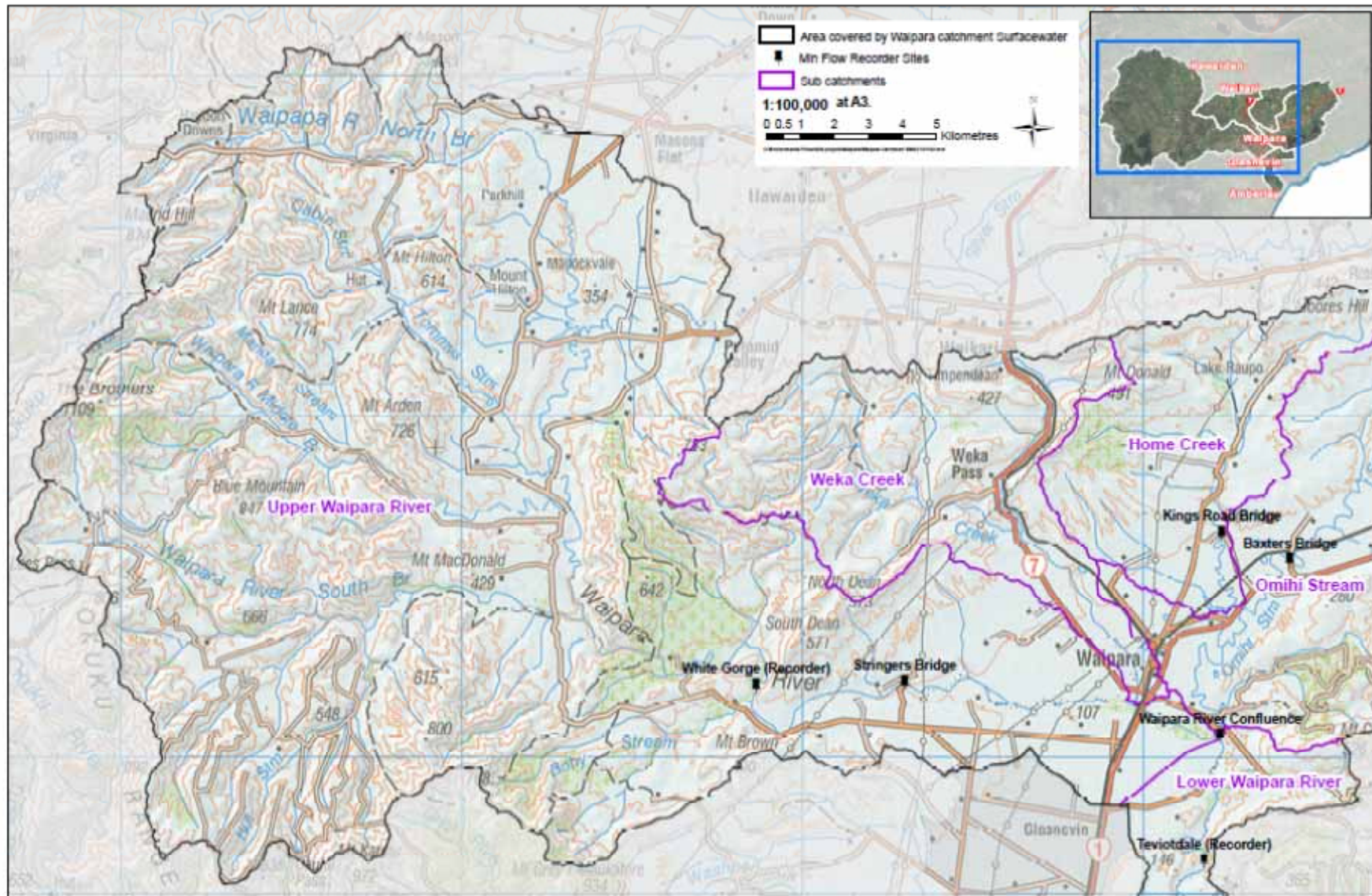
*A new Schedule WQN18 has been added to Chapter 5 showing the attached maps of the Waipara Catchment.*



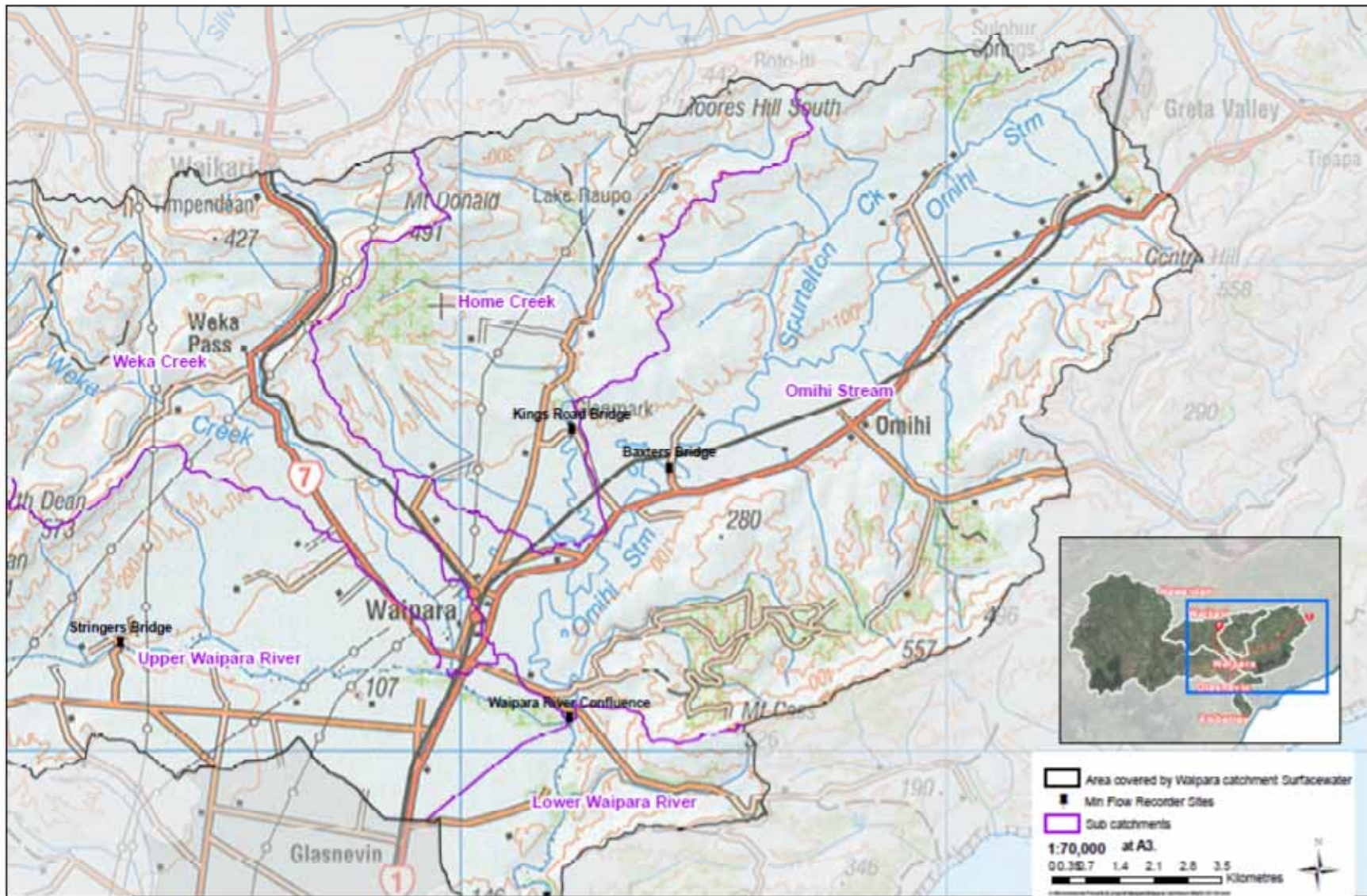
## Schedule WQN 18 – Maps Showing Waipara Catchment Area and Boundaries





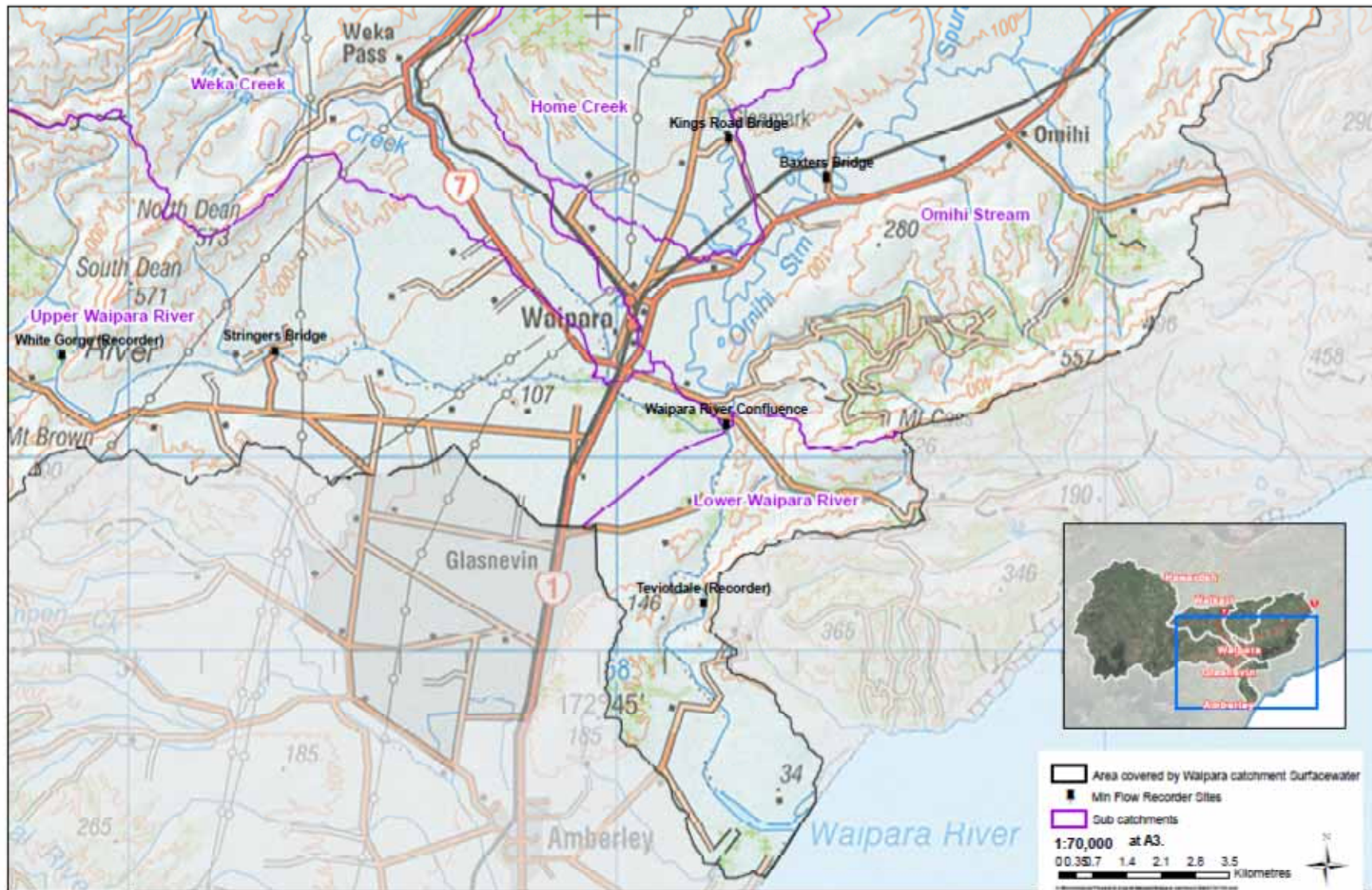






**Map 1b: Waipara Catchment and Sub-Catchments**





**Map 1c: Waipara Catchment and Sub-Catchments**



