

# Incident response in the Hurunui Waiau zone

The public play an important role in protecting our region’s natural resources. Every year, we receive about 4,000 reports regionwide regarding incidents with potential to harm the quality of our air, land or water.

In the Hurunui Waiau zone, we received nearly 180 reports. The majority of these were related to discharges of air, followed by discharges to water and land.

We respond to environmental incidents and consent breaches with a range of enforcement procedures, to remediate adverse effects, educate those responsible, and prevent similar incidents recurring.

Due to the high volume of reports, we respond to the most serious incidents first. If it involves a potentially serious environmental incident or offence, a Resource Management Officer will make a site visit. Our priority when responding is the safety of our officers, followed by minimising any adverse effect, and then investigating the incident.

Our staff call upon expertise from other technical staff (scientists, engineers), city and district council staff, and external consultants as the situation demands.

Breaching the Resource Management Act can amount to serious criminal offending. Our investigative practices are carried out to police standards, including conducting thorough scene examinations and evidence gathering.

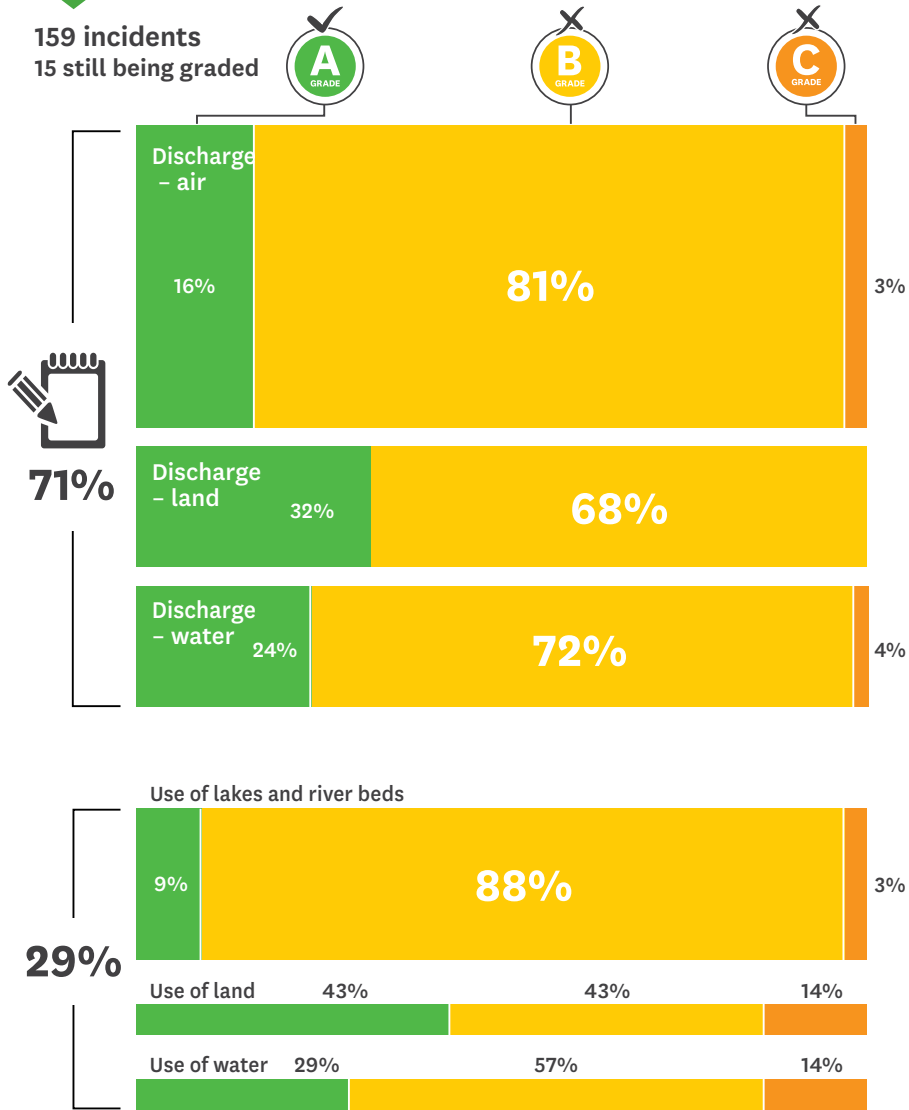
If you’re concerned an activity may be damaging our environment, please call us on 0800 765 588 (24 hours) to report it, or use the Snap Send Solve app to report it from your mobile phone

\*See over for grading explanation

## 174 incidents

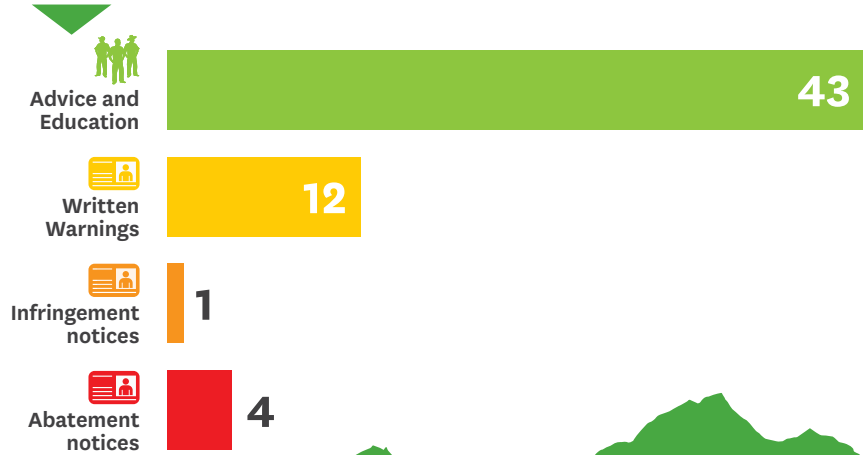
What we found

159 incidents  
15 still being graded



Due to rounding, percentages will not always add up to 100% exactly.

## How we responded to reduce environmental damage



# Compliance monitoring and incident response 2019-20 SNAPSHOT REPORT

## Protecting the environment is our top priority

In the last year, the zone team has:

- responded to 174 incidents,
- targeted 263 consents with a focus on water use,
- we focused on high-risk consents with planned visits as well as spot checks, and
- worked with farmers to provide guidance on fencing to keep stock out of waterways (see below).

### Keeping stock out of our waterways

Stock in our waterways can have a direct impact on water quality or ecological values and is a major area of concern.

Our work in this area is multi-pronged; we respond to calls about this and we also work with farmers to provide guidance to ensure compliance with rules.

In the last year, we’ve continued our work with landowners and seen more fences put up which is building on great progress from previous years. Unfortunately, if there isn’t a fence then we might get a call to report stock in a waterway.

When this happens our first priority is to get stock out of the waterway to make sure there is no further damage. We then investigate to determine what action should be taken, including enforcement.

However, by working with landowners to ensure they’re compliant with the rules it helps us deal with environmental risks before they turn into incidents and cause damage.

This work highlights how our whole zone team - from the land management advisor to the resource management officer to the incident response officers - all play an important role in protecting our environment.

- ▶ See inside for our consent compliance results.
- ◀ See the back for our incident response results.



Marco Cataloni  
Zone Lead  
Email: marco.cataloni@ecan.govt.nz  
Phone: 027 241 7951

Taking action together to shape a thriving and resilient Canterbury, now and for future generations.  
Toitū te marae o Tāne, toitū te marae o Tangaroa, toitū te iwi.

www.ecan.govt.nz

# Compliance monitoring

JULY 2019 – JUNE 2020 REPORT

## Why this matters

We are working with land managers, individuals and industry to improve compliance to ensure the best long-term environmental results.

### Consenting rules

- Resource consents allow people or organisations to do something that may have an effect on the environment, but this comes with conditions to protect the environment.
- It is important consent holders comply with their conditions otherwise they can have a negative impact on the environment.

### What the grades mean

- (Full compliance)** Full compliance with all relevant consent conditions, plan rules, regulations and national environmental standards
- (Low risk Non-Compliance)** Compliance with most of the relevant consent conditions, plan rules, regulations and national environmental standards. Carries a low risk of adverse environmental effects.
- (Moderate non-compliance)** Non-compliance with some of the relevant consent conditions, plan rules, regulations and national environmental standards. Some environmental consequence.
- (Significant non-compliance)** Non-compliance with many of the relevant consent conditions, plan rules, regulations and national environmental standards. Significant environmental consequence.

### How we respond to improve compliance grades

If there is an issue, our first response is to work with individuals and businesses to stop any immediate environmental damage.

We then investigate to determine what actions should be taken, including enforcement.

**Education** can achieve better outcomes and is valued by consent holders who need help. If education does not get the right results, there are a range of compliance actions as set out below:

**Formal written warnings** notify of an offence and require action to be taken.

**Infringement notices**, which include a fine, are issued for more significant breaches.

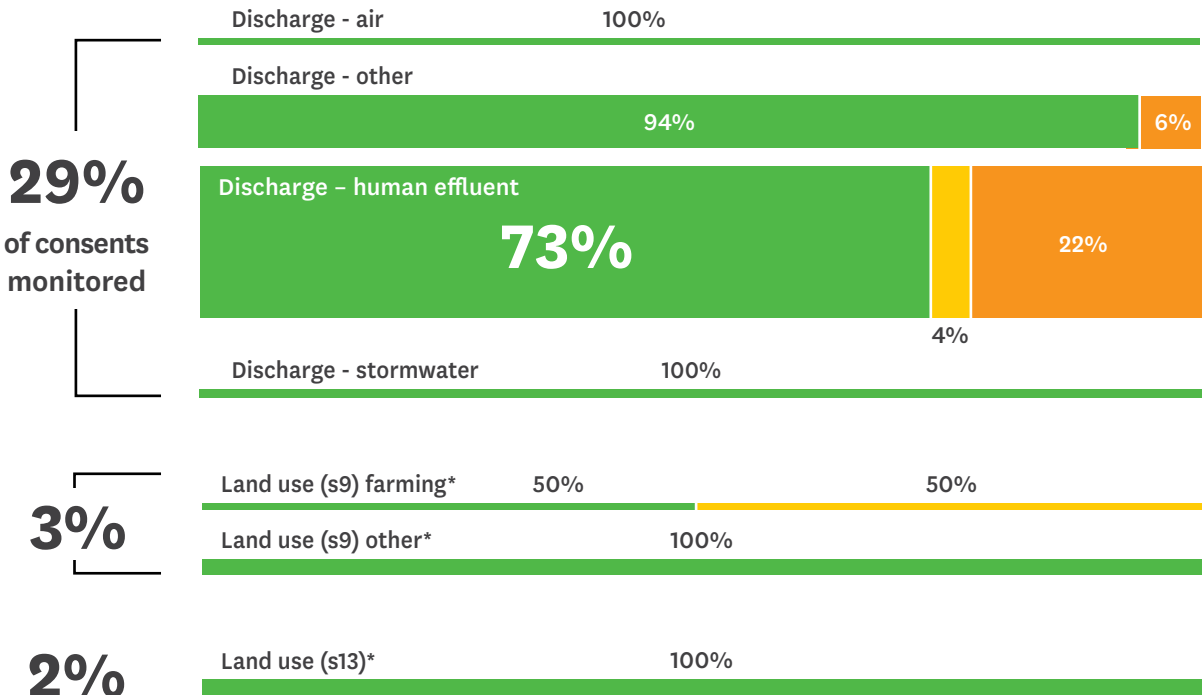
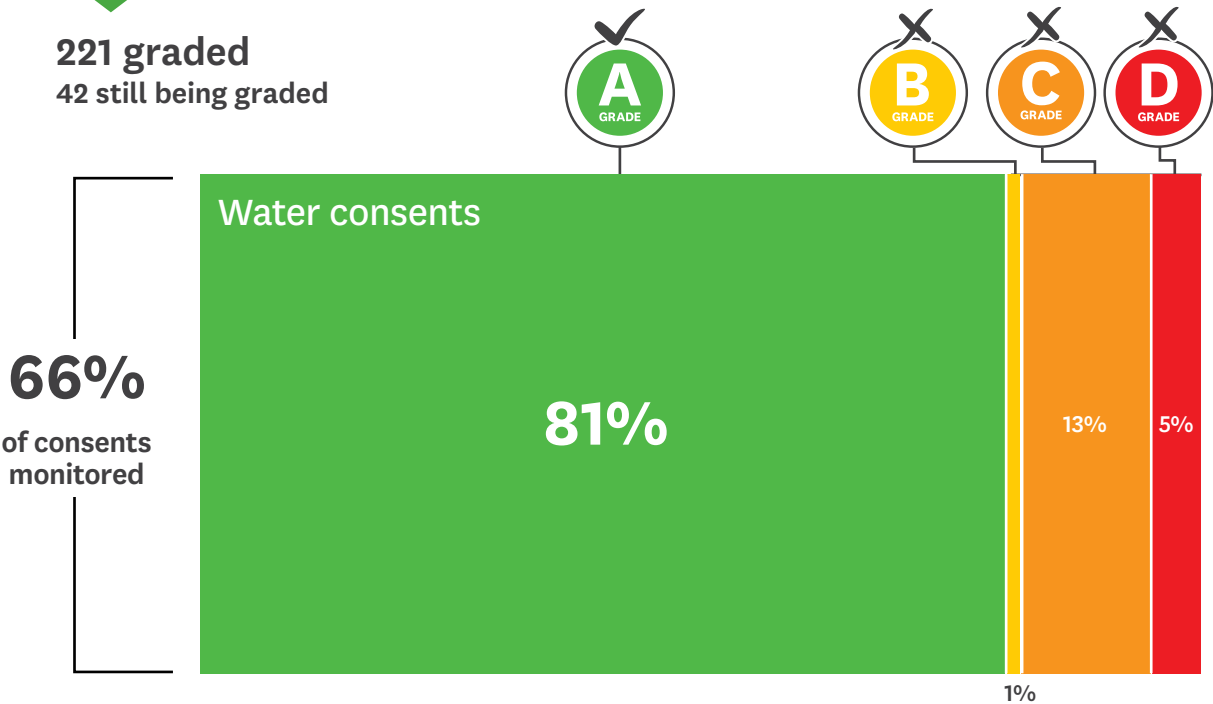
**Abatement notices** are a formal written direction, requiring certain actions to be taken or to cease within a specified time.

**Prosecution** is reserved for offences so serious that warrant court proceedings.

# 263 consents targeted

## What we monitored

221 graded  
42 still being graded

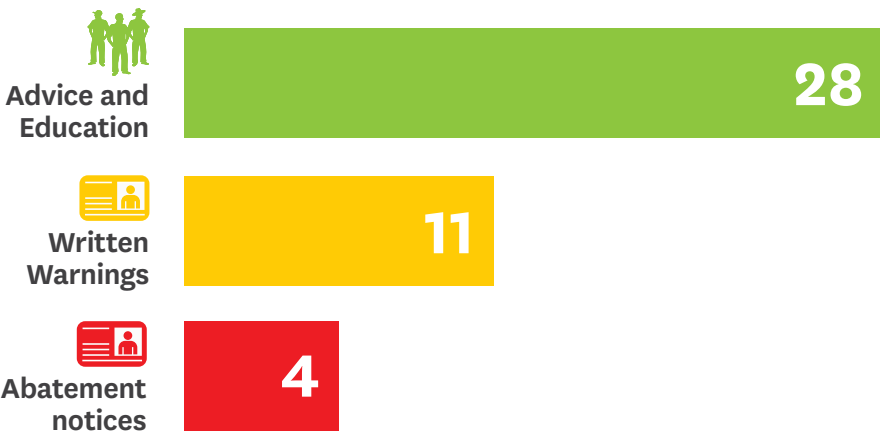


Due to rounding, percentages will not always add up to 100% exactly.

Note: Only data for completed monitored visits shown.

\*Please refer to sections 9 & 13 of the land use section of the Resource Management Act.

## How we responded to improve compliance grades



## 5,339 inspections by zone

Some consents have multiple inspections, these include those with a C or D compliance rating, as well as those identified as high-risk which are subject to more regular monitoring.

