



LAWA water quality

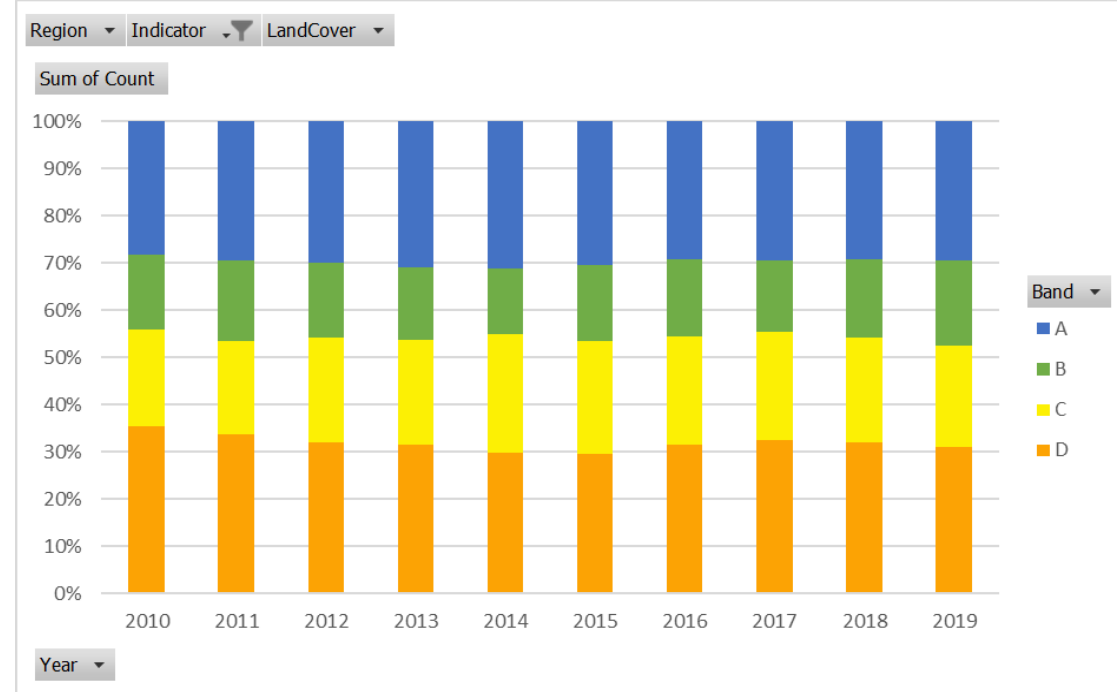
Rangitata River, Canterbury

Land, Air Water Aotearoa (LAWA)

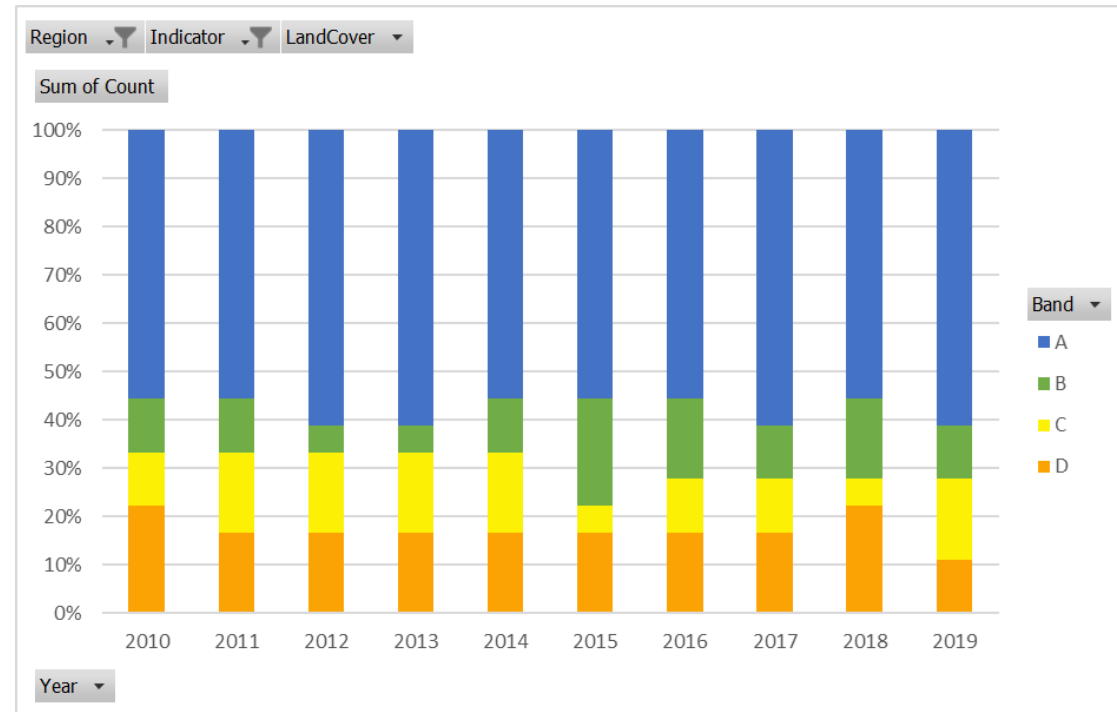
- Powerful tool for quickly looking at water quality
- National summary comes out annually when data are updated
- At the national level the state of water quality has not changed markedly over the past 10 years

Dissolved phosphorus state with time

- National summary
- Based on 5 years of data for every year displayed (i.e. by design it will be slow to change)

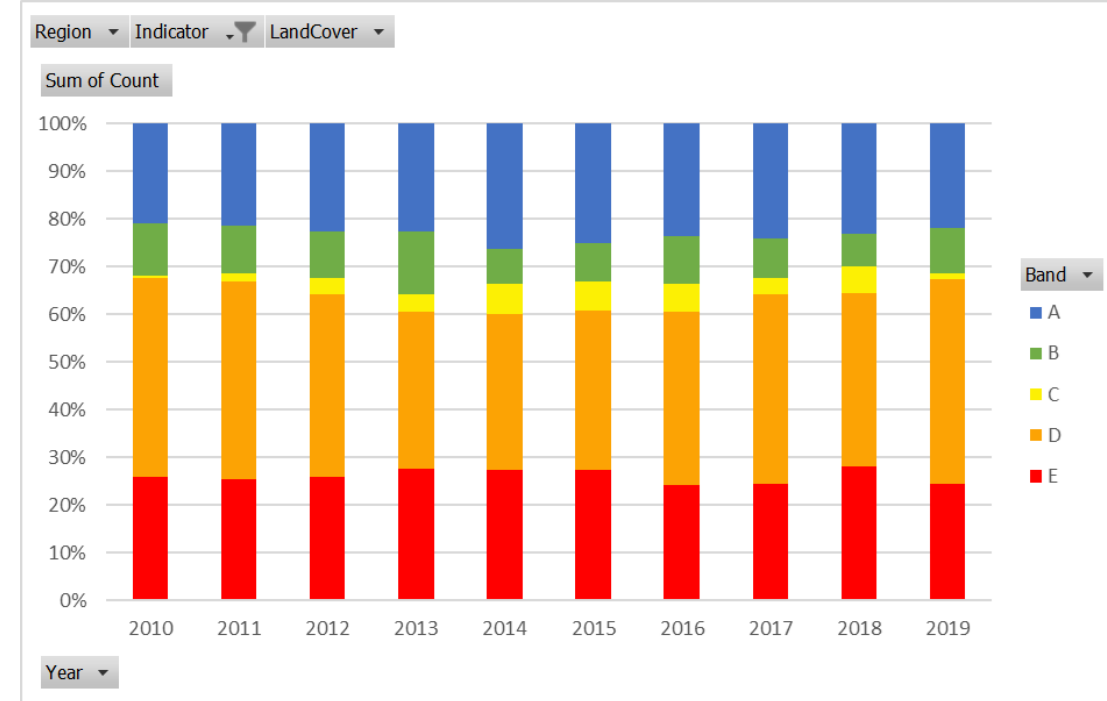


- Canterbury same display
- But only 18 sites with enough data (monthly for 15 years)

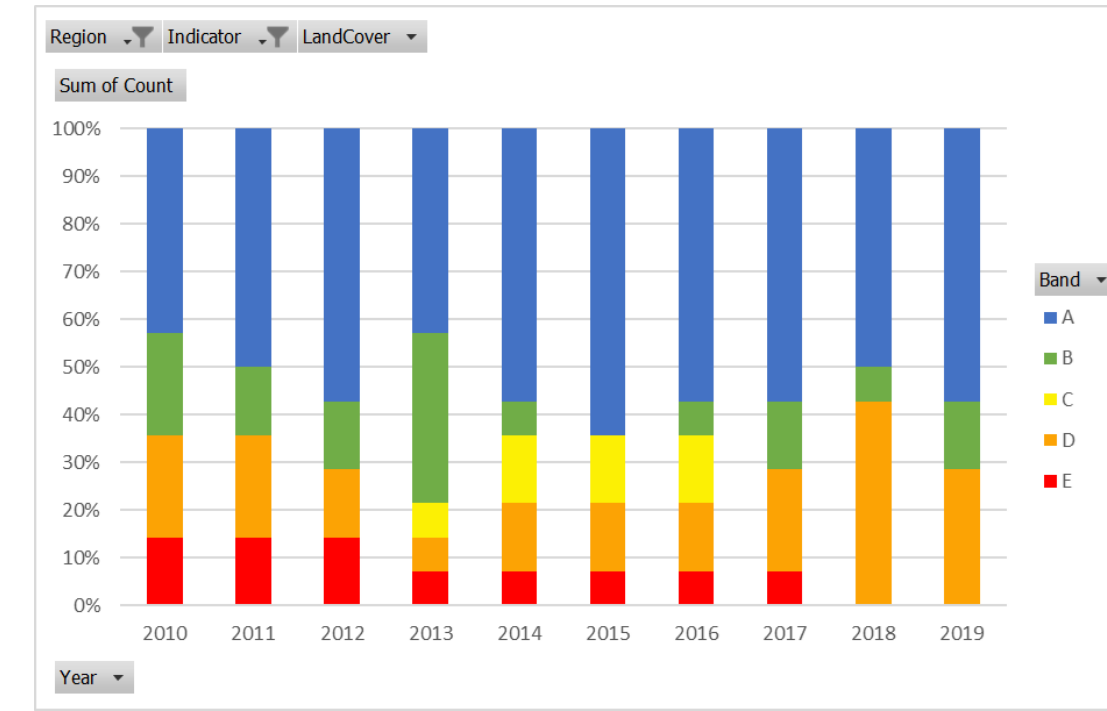


E. Coli state with time

- National summary
- Based on 5 years of data for every year displayed (i.e. by design it will be slow to change)

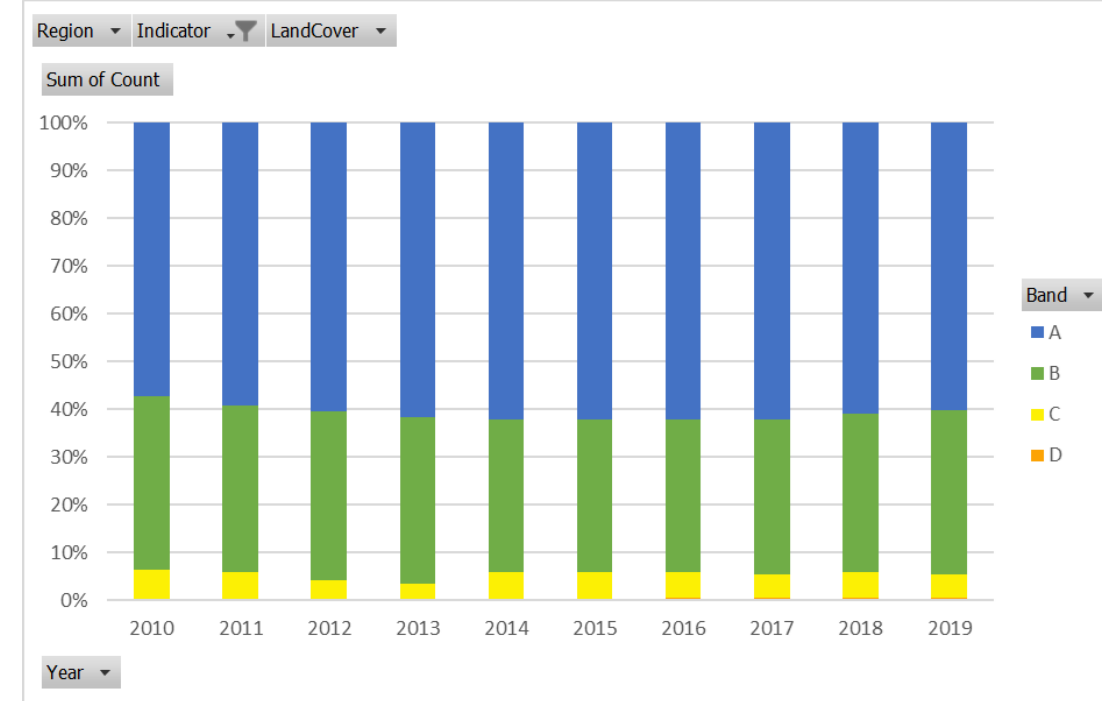


- Canterbury same display
- But only 14 sites with enough data (monthly for 15 years)

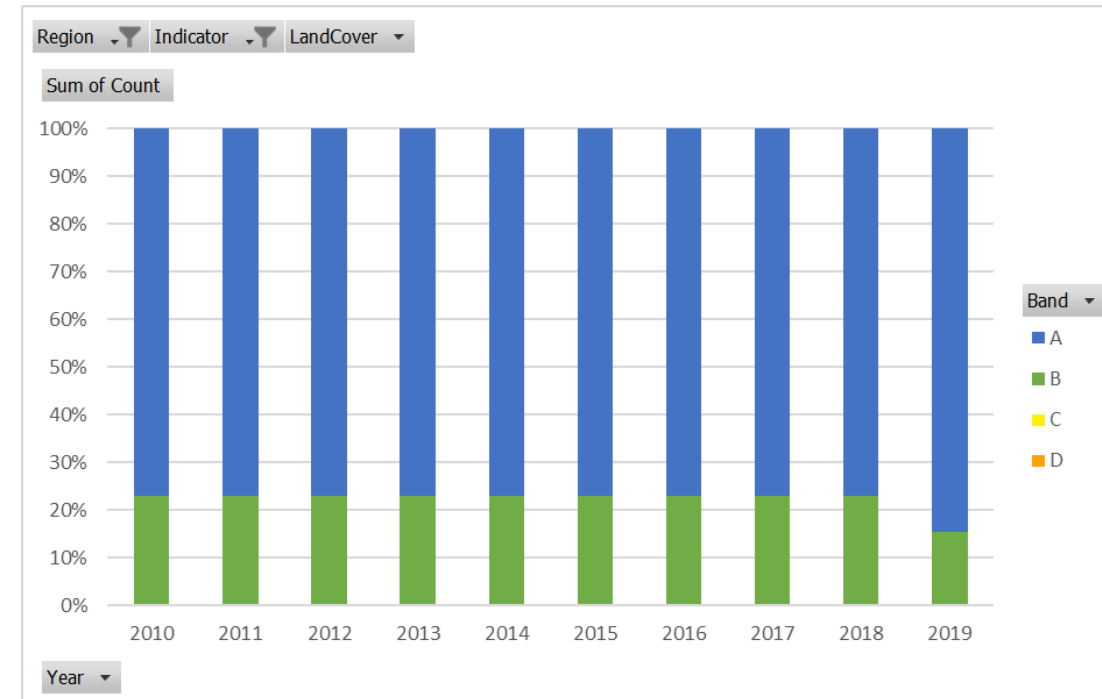


Ammonia state with time

- National summary
- Based on 5 years of data for every year displayed (i.e. by design it will be slow to change)



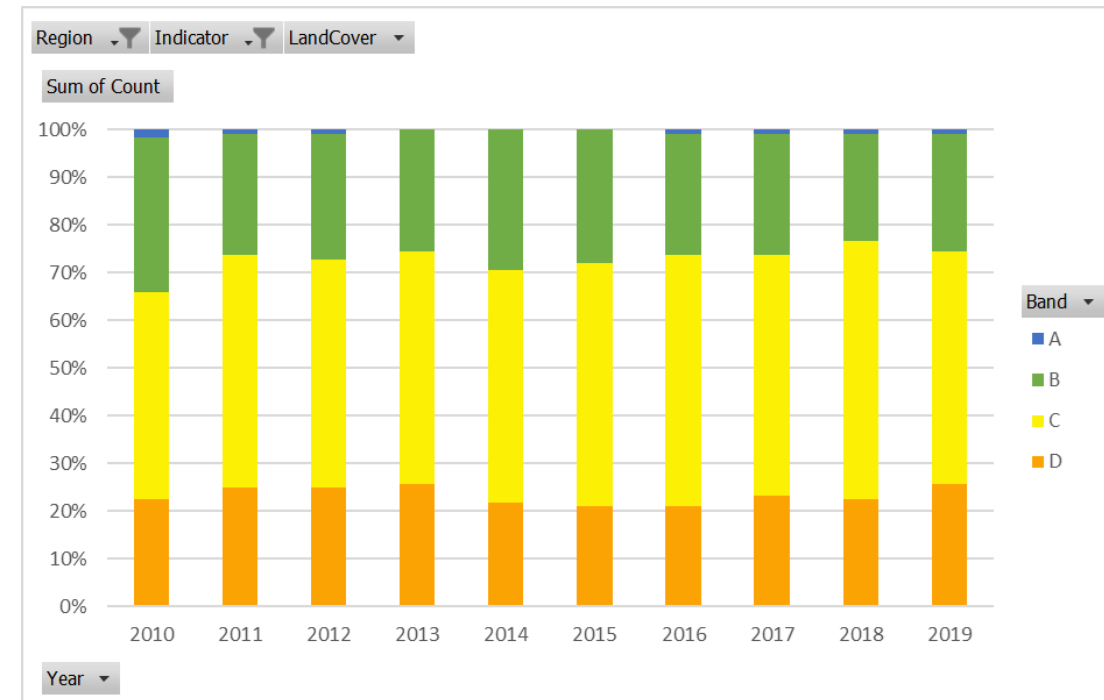
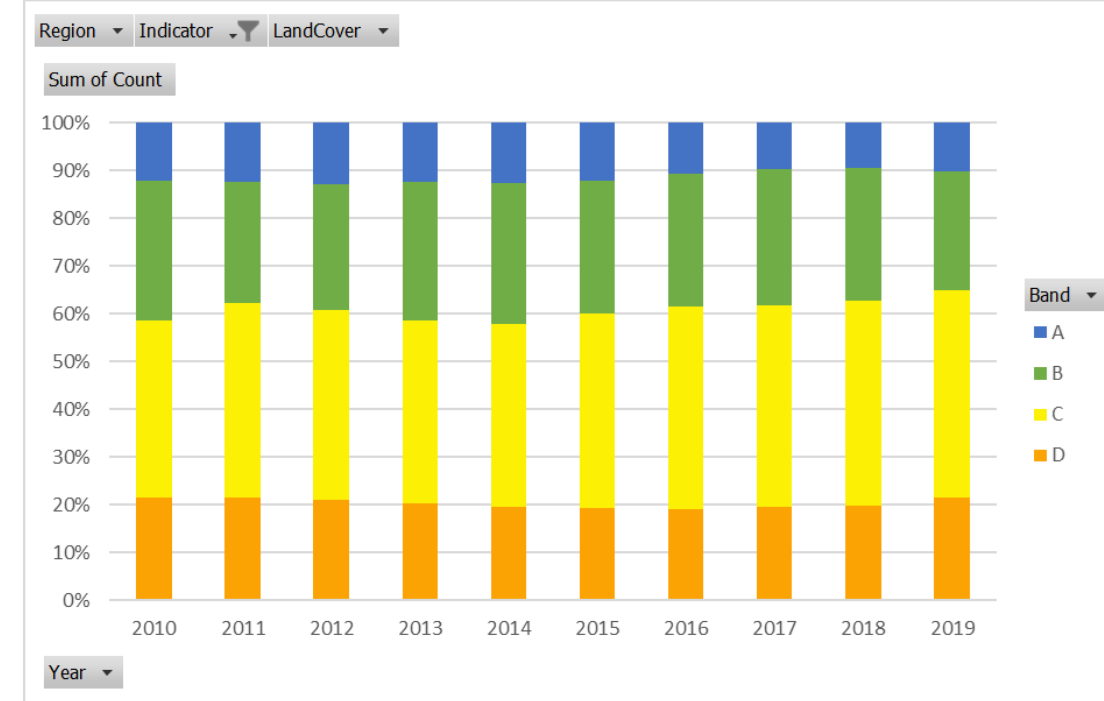
- Canterbury same display
- But only 13 sites with enough data (monthly for 15 years)



Macroinvertebrates state with time

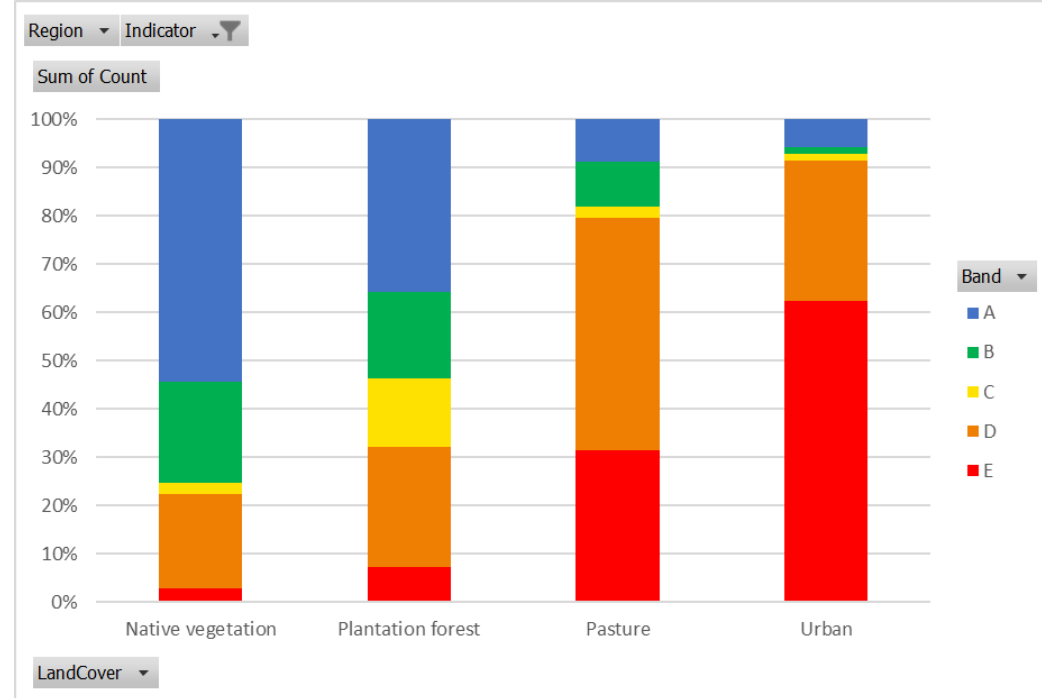
- National summary
- Based on 5 years of data for every year displayed (i.e. by design it will be slow to change)

- Canterbury same display
- 129 sites with enough data

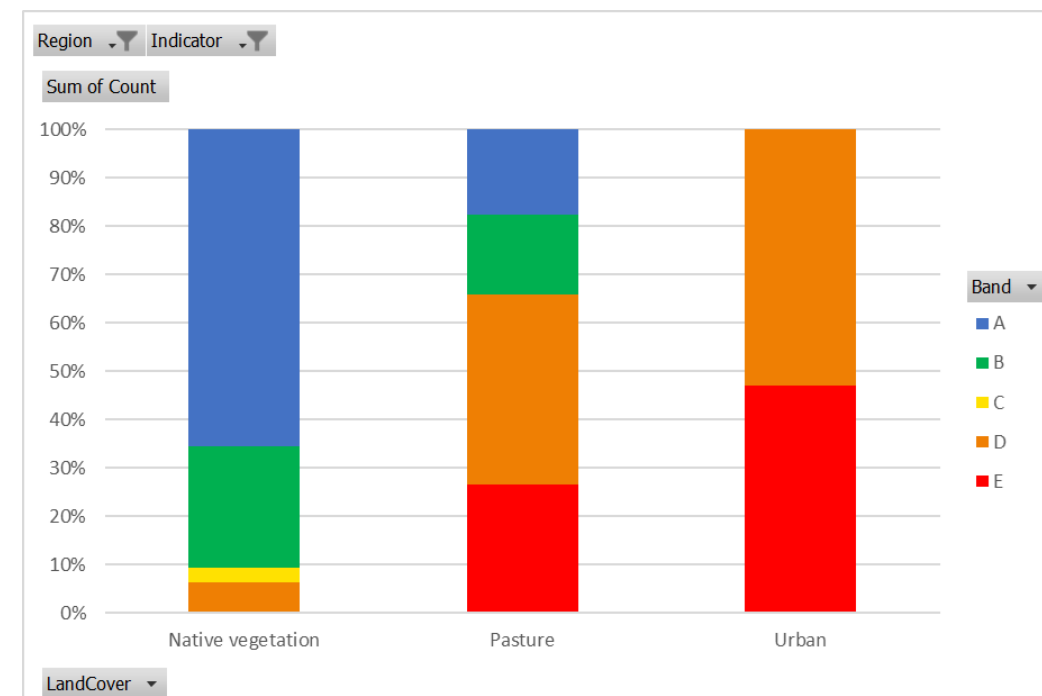


E. coli by land use

- National summary using REC classes
- Last two years data shown here

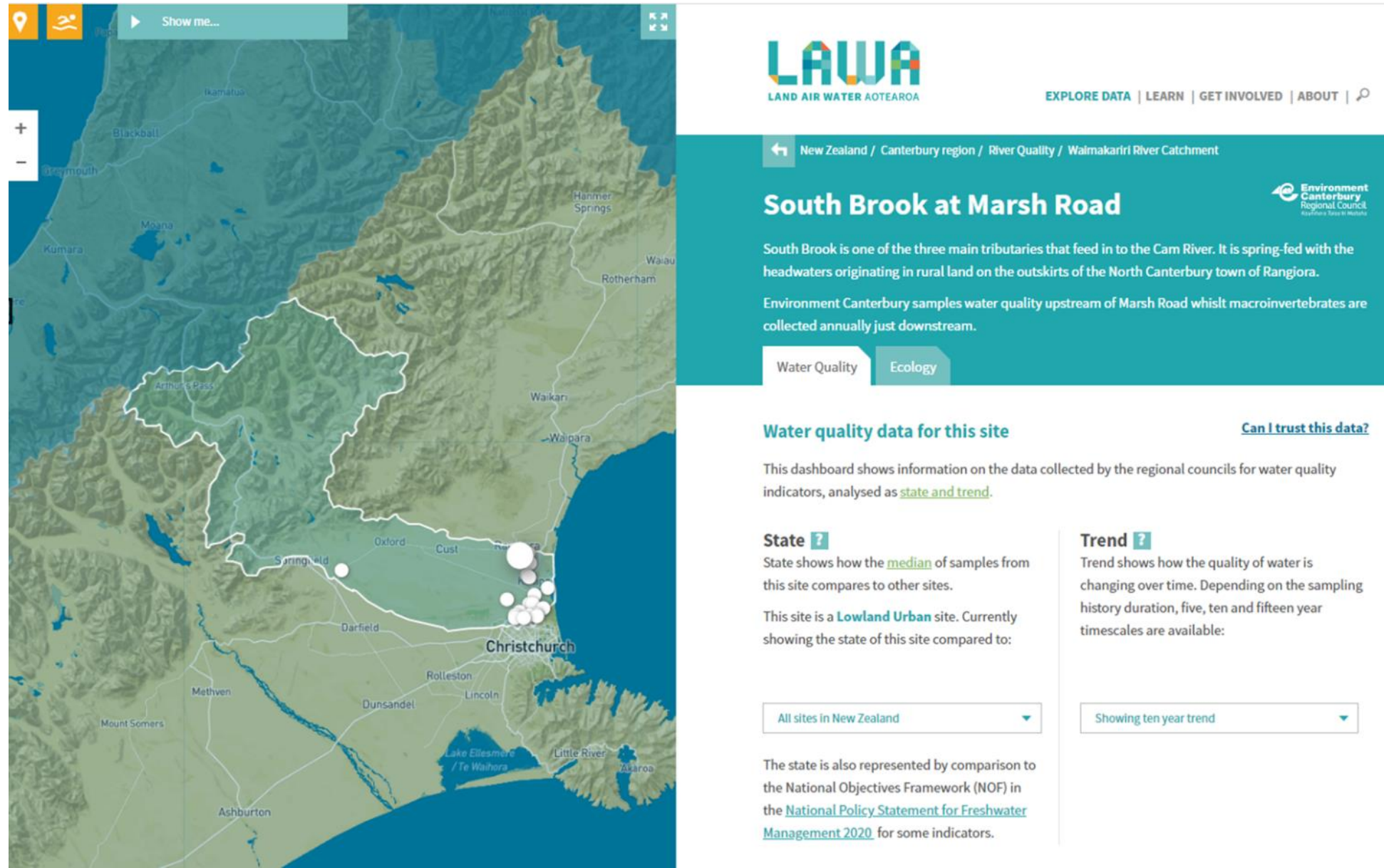


- Canterbury same display
- 145 sites (including 34 urban)



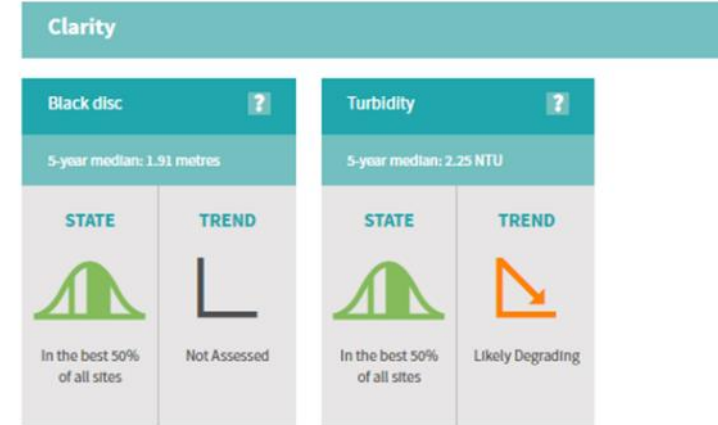
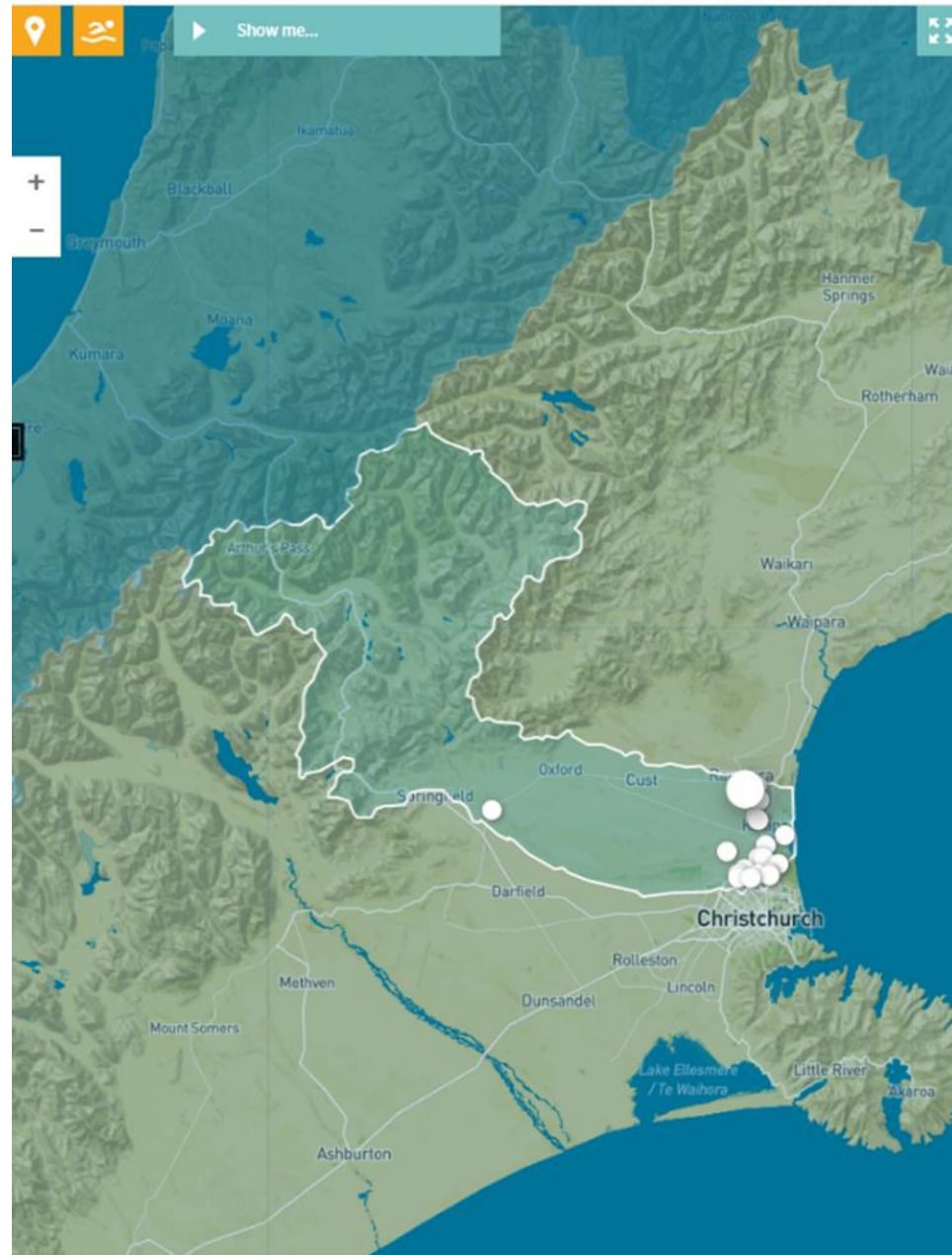
Find your site on LAWA

- Text



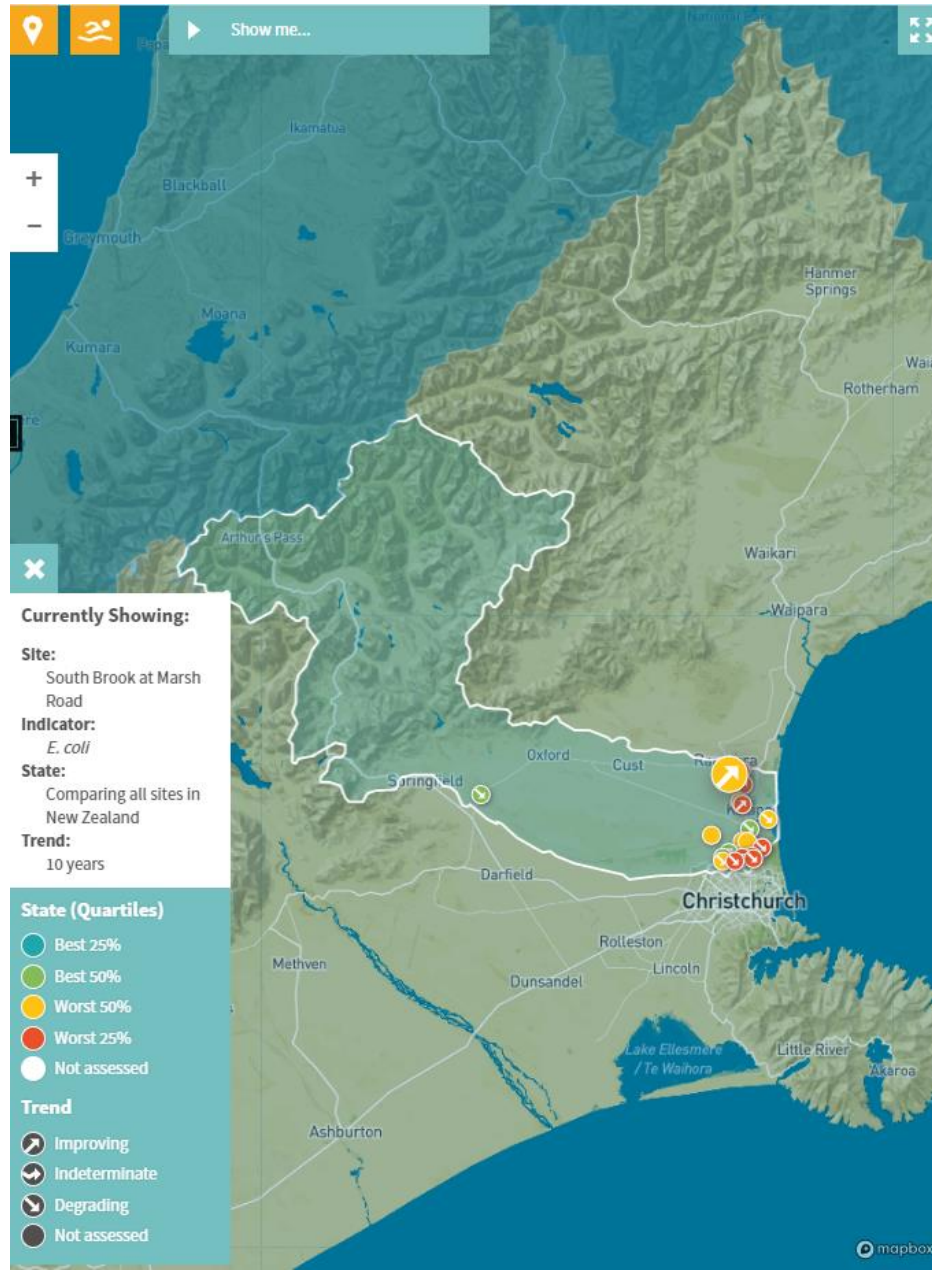
Water quality parameters for your site

- E. coli
- Clarity measures
- Three forms of nitrogen (including ammonia)
- Two forms of phosphorus



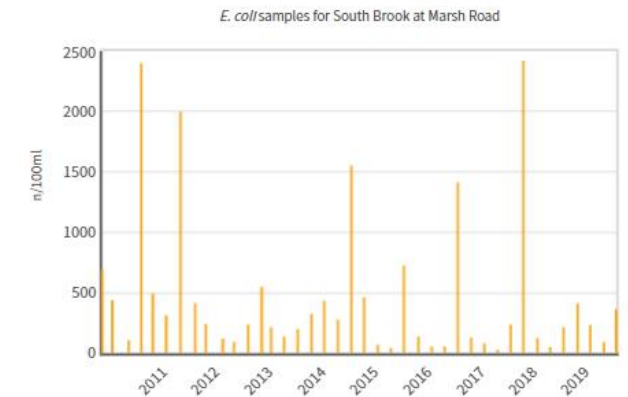
Detail on *E. coli*

- Show data used for state and trend



Sample history at this site

Showing: 2010 - 2019



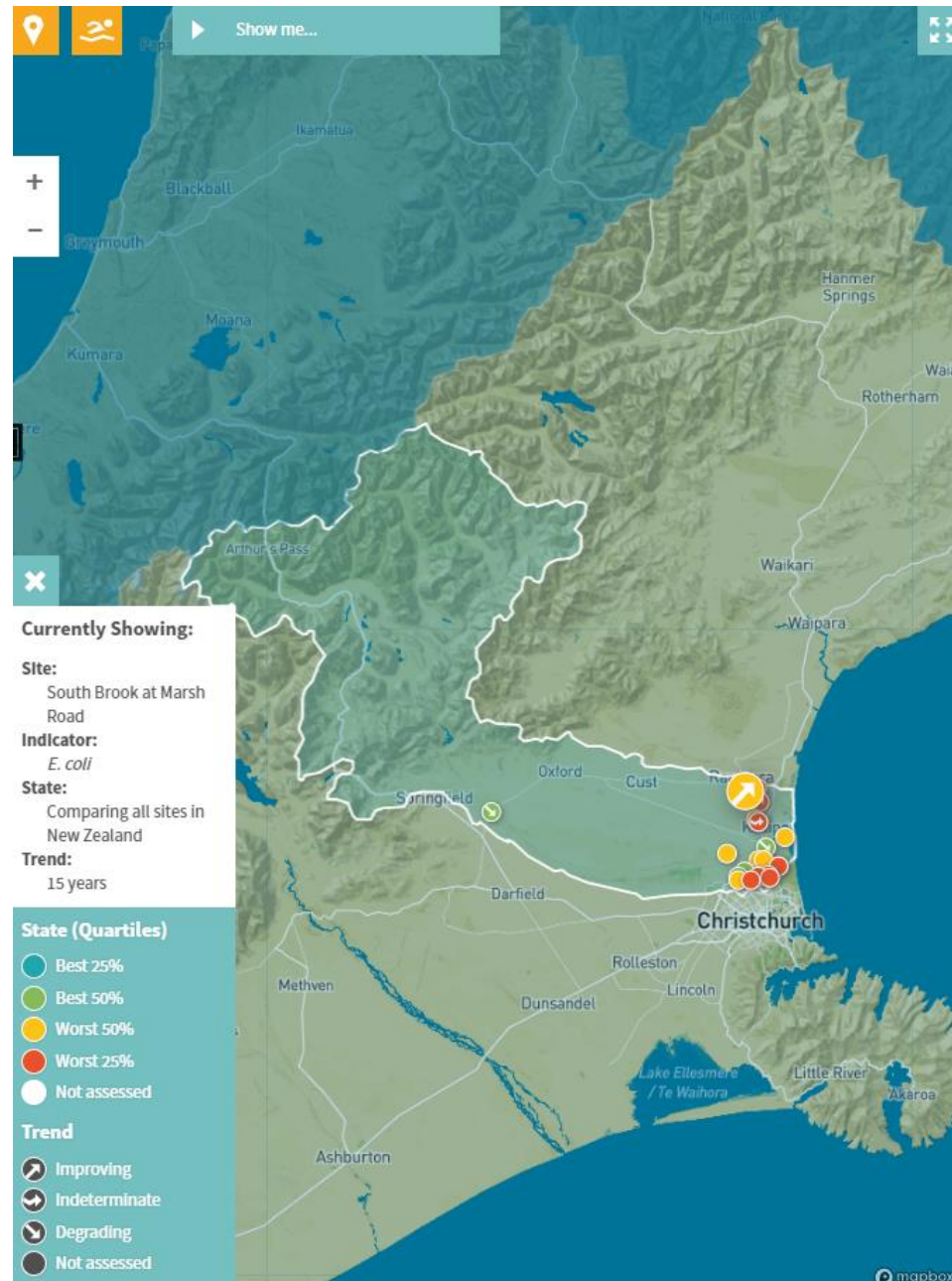
What is this graph showing me?

This graph is displaying *E. coli* concentrations over the selected time period. You can adjust this period by changing the dropdowns. These records form the basis for the state and trend indicators displayed on the dashboard.

Find out about how [State](#) and [Trend](#) are calculated.

Longer time series for *E. coli*

- Can extend period of data and trend
- Showing 15 year trend



the [National Policy Statement for Freshwater Management 2020](#) for some indicators.

Bacteria

E. coli

5-year median: 133 n/100ml

STATE



In the worst 50% of all sites

STATE



NOF Band

TREND

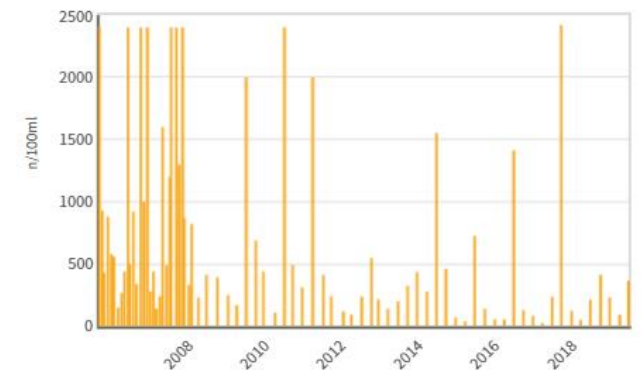


Very Likely Improving

Sample history at this site

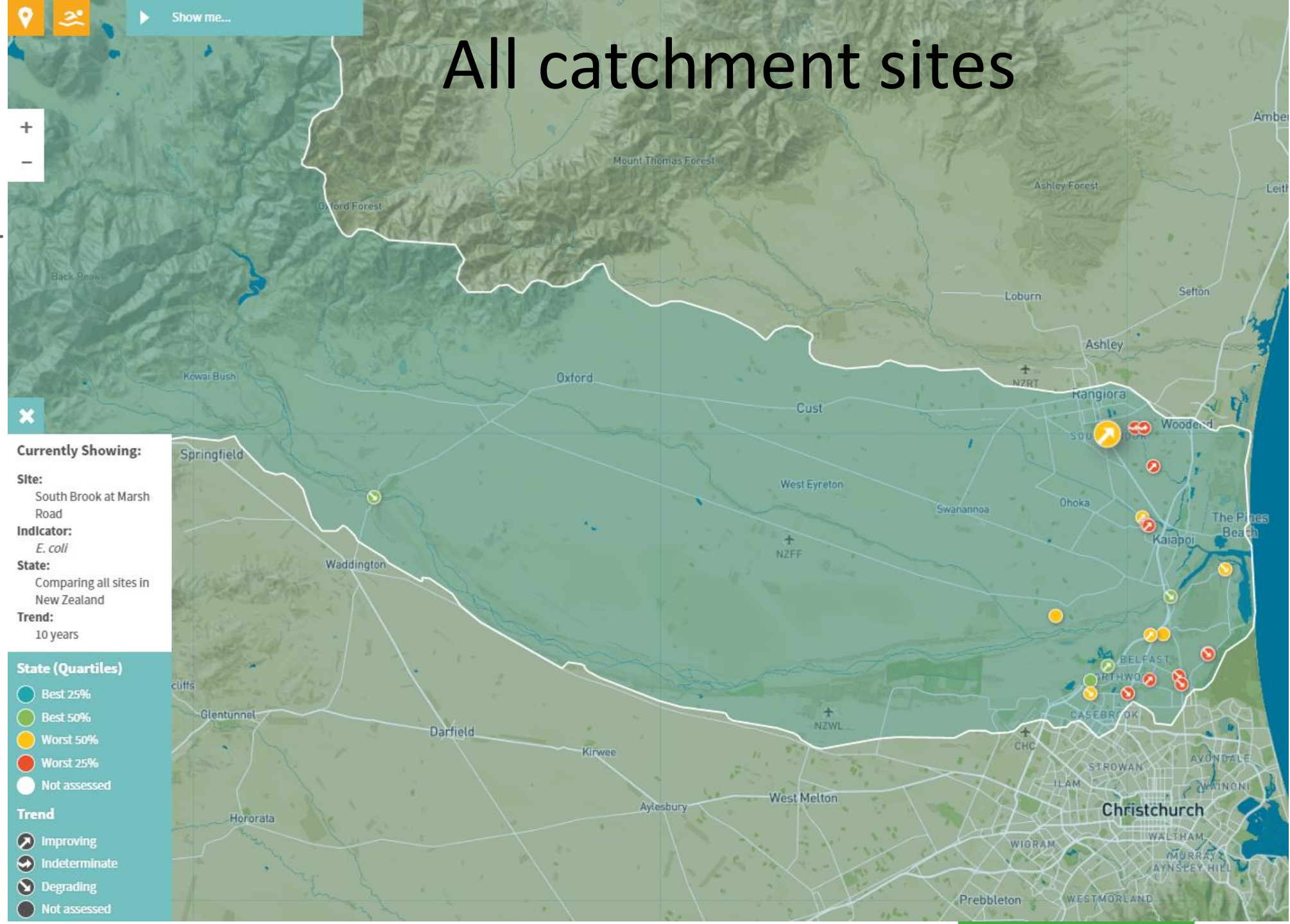
Showing: 2006 - 2019

E. coli/samples for South Brook at Marsh Road



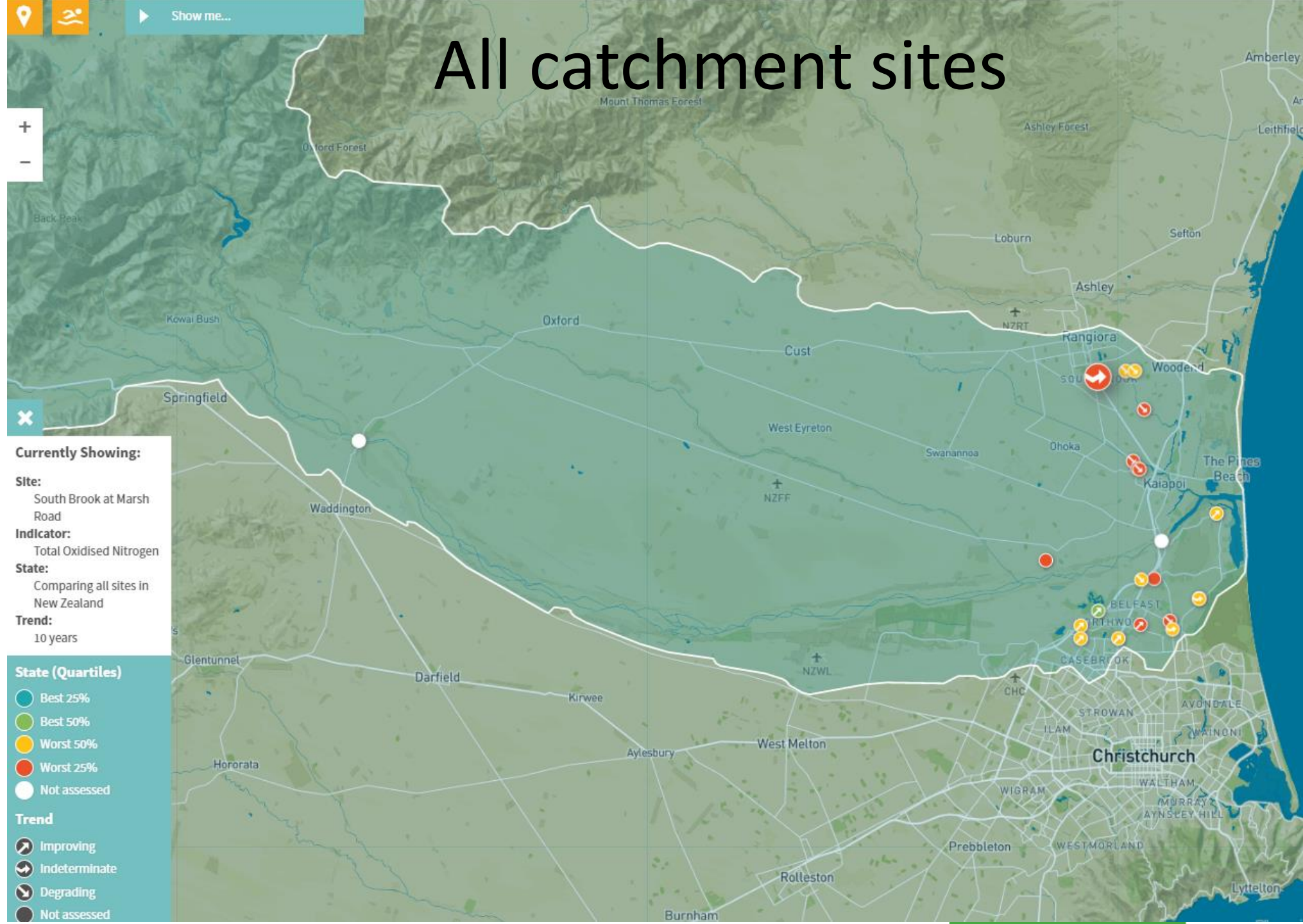
All catchment sites

E. coli state and 10-year trend for all sites in catchment



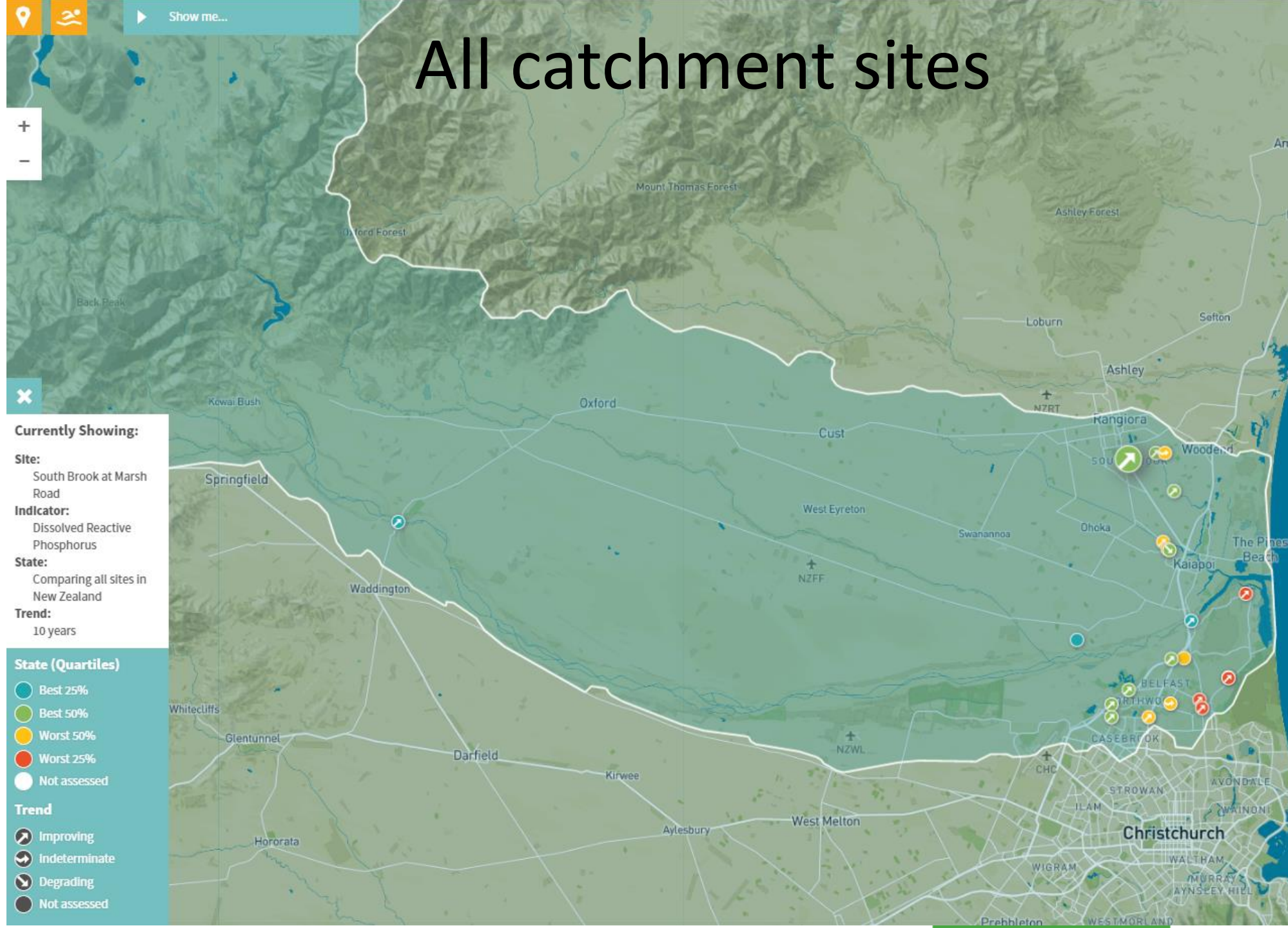
All catchment sites

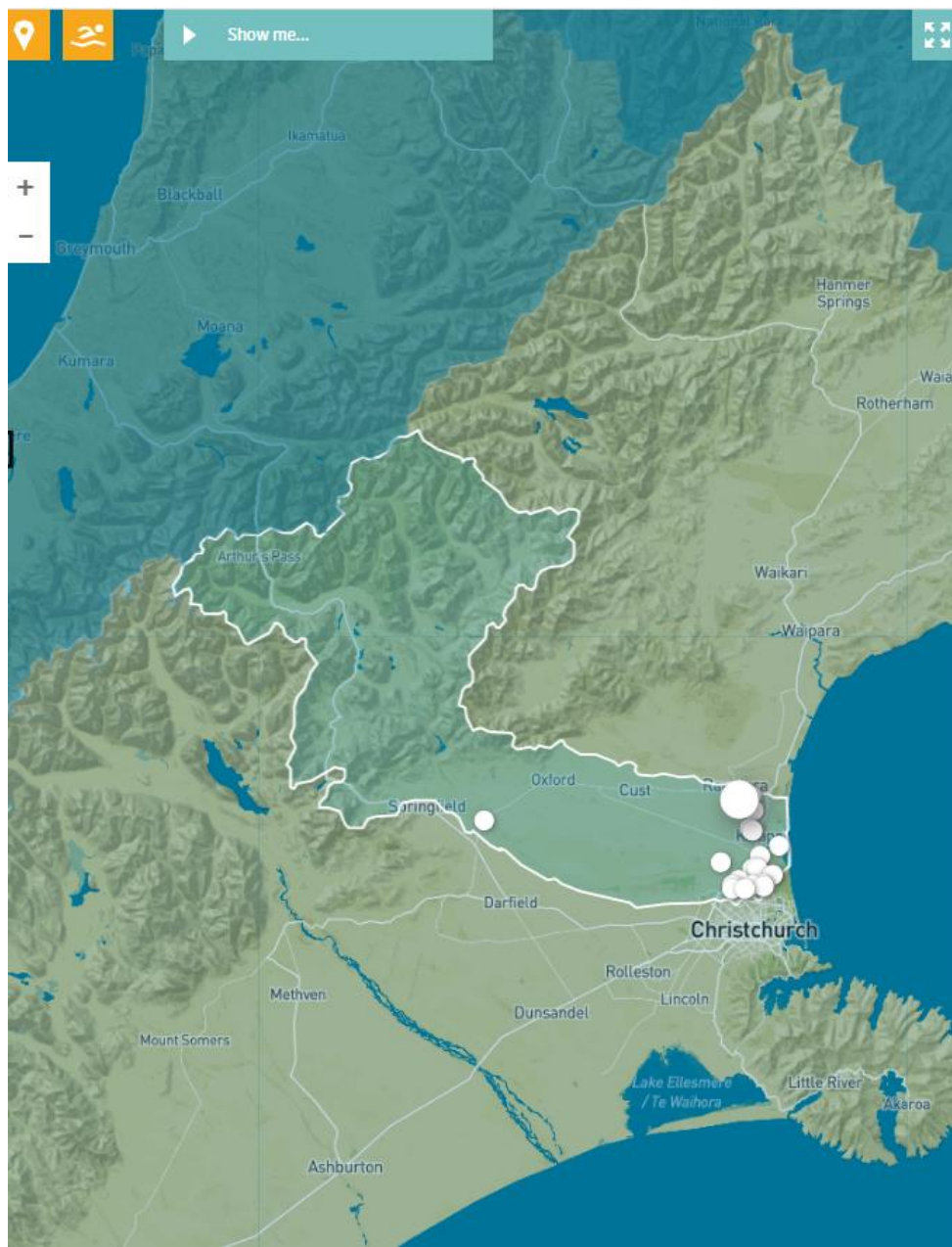
Nitrate/nitrite state
and 10-year trend
for all sites in
catchment



All catchment sites

Dissolved phosphorus state and 10-year trend for all sites in catchment





[EXPLORE DATA](#) | [LEARN](#) | [GET INVOLVED](#) | [ABOUT](#) |

[New Zealand](#) / [Canterbury region](#) / [River Quality](#) / [Waimakariri River Catchment](#)

South Brook at Marsh Road



South Brook is one of the three main tributaries that feed in to the Cam River. It is spring-fed with the headwaters originating in rural land on the outskirts of the North Canterbury town of Rangiora.

Environment Canterbury samples water quality upstream of Marsh Road whilst macroinvertebrates are collected annually just downstream.

Water Quality

Ecology

Water quality data for this site

[Can I trust this data?](#)

This dashboard shows information on the data collected by the regional councils for water quality indicators, analysed as [state and trend](#).

State ?

State shows how the [median](#) of samples from this site compares to other sites.

This site is a **Lowland Urban** site. Currently showing the state of this site compared to:

All sites in New Zealand

The state is also represented by comparison to the National Objectives Framework (NOF) in the [National Policy Statement for Freshwater Management 2020](#) for some indicators.

Trend ?

Trend shows how the quality of water is changing over time. Depending on the sampling history duration, five, ten and fifteen year timescales are available:

Showing ten year trend



**Environment
Canterbury**
Regional Council
Kaunihera Taiao ki Waitaha

*Facilitating sustainable development in
the Canterbury region*

www.ecan.govt.nz