

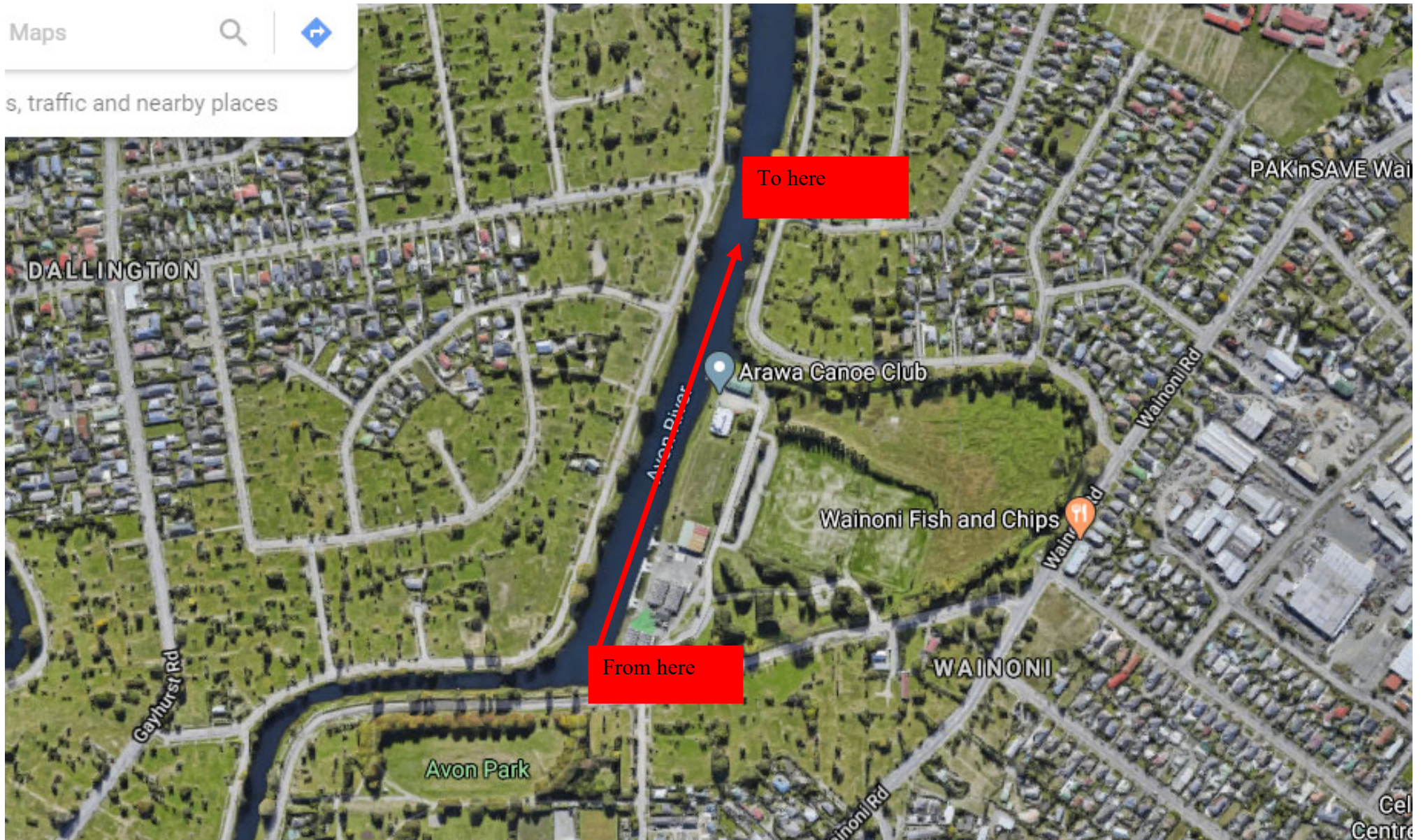
Temporary Reservation Certificate, issued pursuant to:  
Canterbury Regional Council Navigation Safety Bylaw 2016  
Clauses 12 and 32.

Name of holder:	Samantha Holland T/A Samevents
Period:	From: 11am, Saturday 28 <sup>th</sup> March 2020 to 5pm Saturday 28 <sup>th</sup> March 2020 unless revoked by the Harbourmaster.
Reserved Area:	Avon River, Kerrs Reach, Christchurch. (As per map attached)
Map attached:	Yes
Purpose:	Duck Down non- powered craft event on the Avon river.
Reservation:	No vessel shall navigate within the Reserved Area as listed above except with the express permission of, and in a manner explicitly approved by, the certificate holder, his delegate or the Harbourmaster.
Conditions:	
Publication of notice of Reservation:	At least 7 days prior to event being undertaken, notification to known affected groups including Rowing NZ, Canterbury Rowing and Arawa Canoe Club, notifications on appropriate websites and social media; notices at known boat ramps and key access points, public notices in the Christchurch Press and Star.
Notice of Reservation to be:	Displayed at: <b>As above.</b> Displayed by: Samantha Holland (or delegate). Removed by: Samantha Holland (or delegate).
A copy of the Temporary Reservation Certificate to be carried by:	Samantha Holland
Safety conditions:	<ul style="list-style-type: none"><li>• All vessels are required to be identified as per part 20 of the Navigation Safety Bylaw 2016.</li><li>• All persons on vessels are required to comply with part 5 of the Navigation Safety Bylaw 2016 relating to the wearing of lifejackets (PFDs)</li><li>• The organisers shall be responsible for supplying sufficient marshalls at the event to advise other users of the reserved area.</li><li>• Any powered vessels are not to exceed 5 knots or create a wake that causes disturbance.</li></ul>
Temporary Reservation shall not take effect if:	<b>Conditions above are not met.</b>
Issued under delegation by:	Gary Manch: Navigation Safety Officer 18 <sup>th</sup> February 2020
Approval date:	

Maps



s, traffic and nearby places



Our ref: NAVI/BRD/5

Contact: Gary Manch; [harbourmaster@ecan.govt.nz](mailto:harbourmaster@ecan.govt.nz); 0800 32 4636