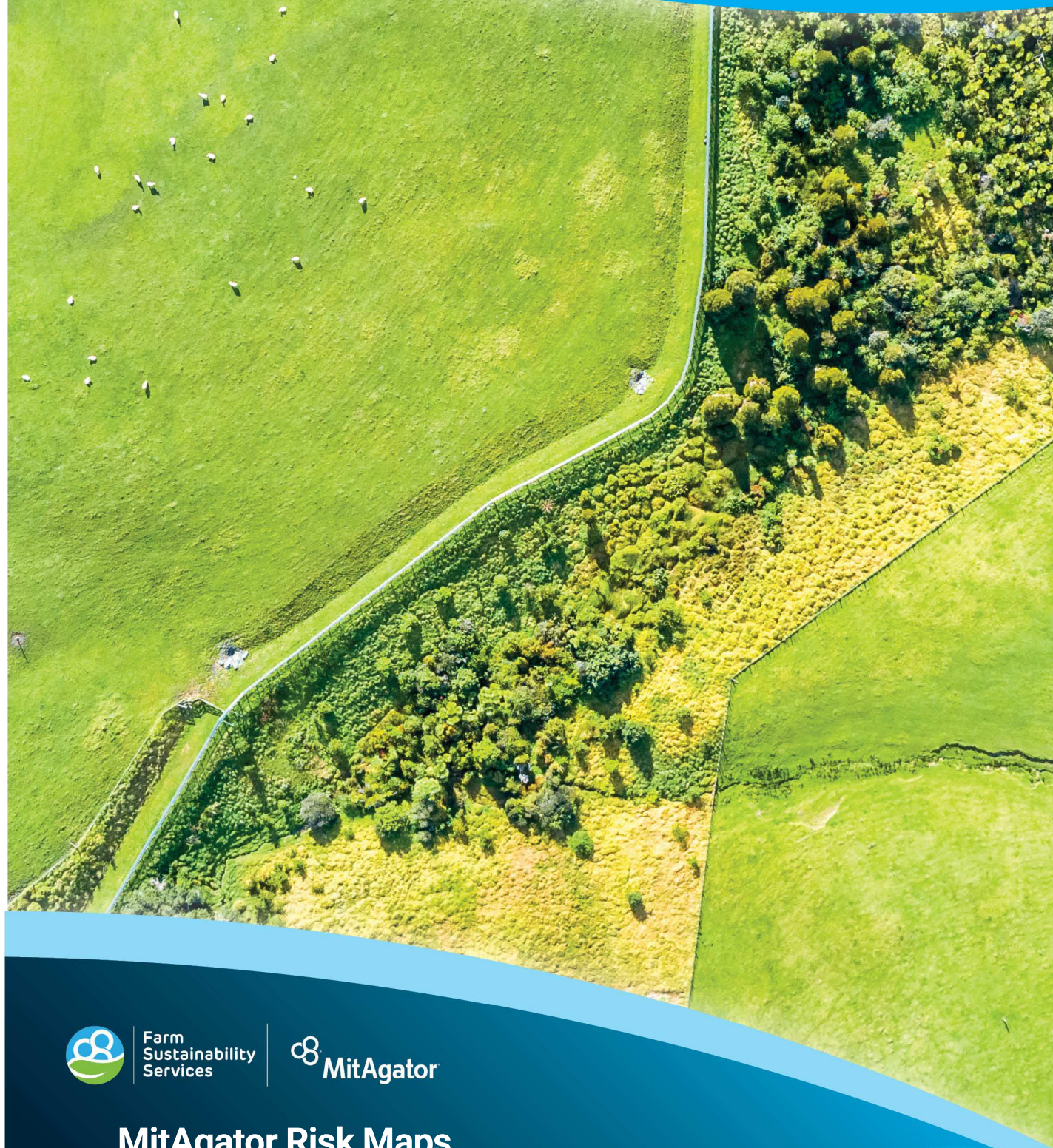




agri-nutrients
Ballance

Together,
Creating the Best
Soil and Feed on Earth



Farm
Sustainability
Services



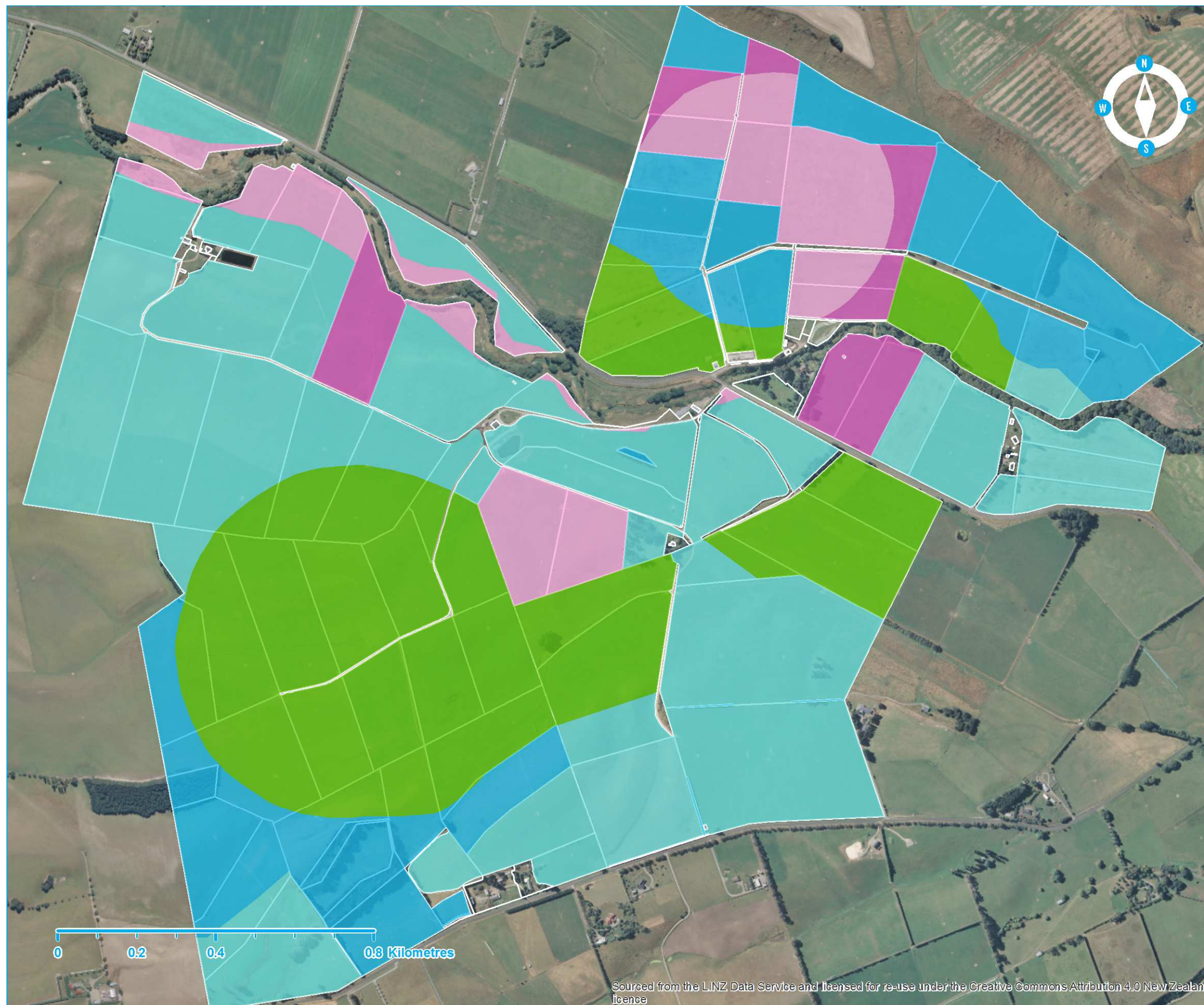
MitAgator

MitAgator Risk Maps

Farm Name
Meadowvale Ltd

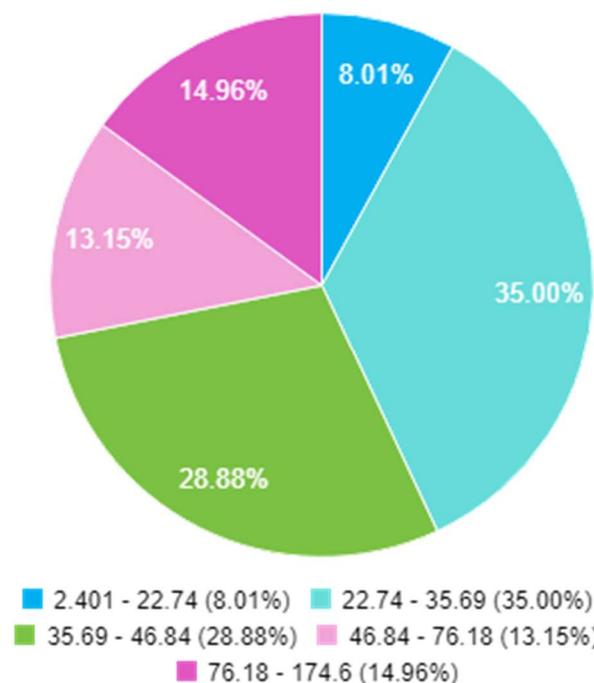
Date Completed
Thursday 8
August 2019

Farm Sustainability Services Contact
jhollever



Risk map Classification: Natural breaks

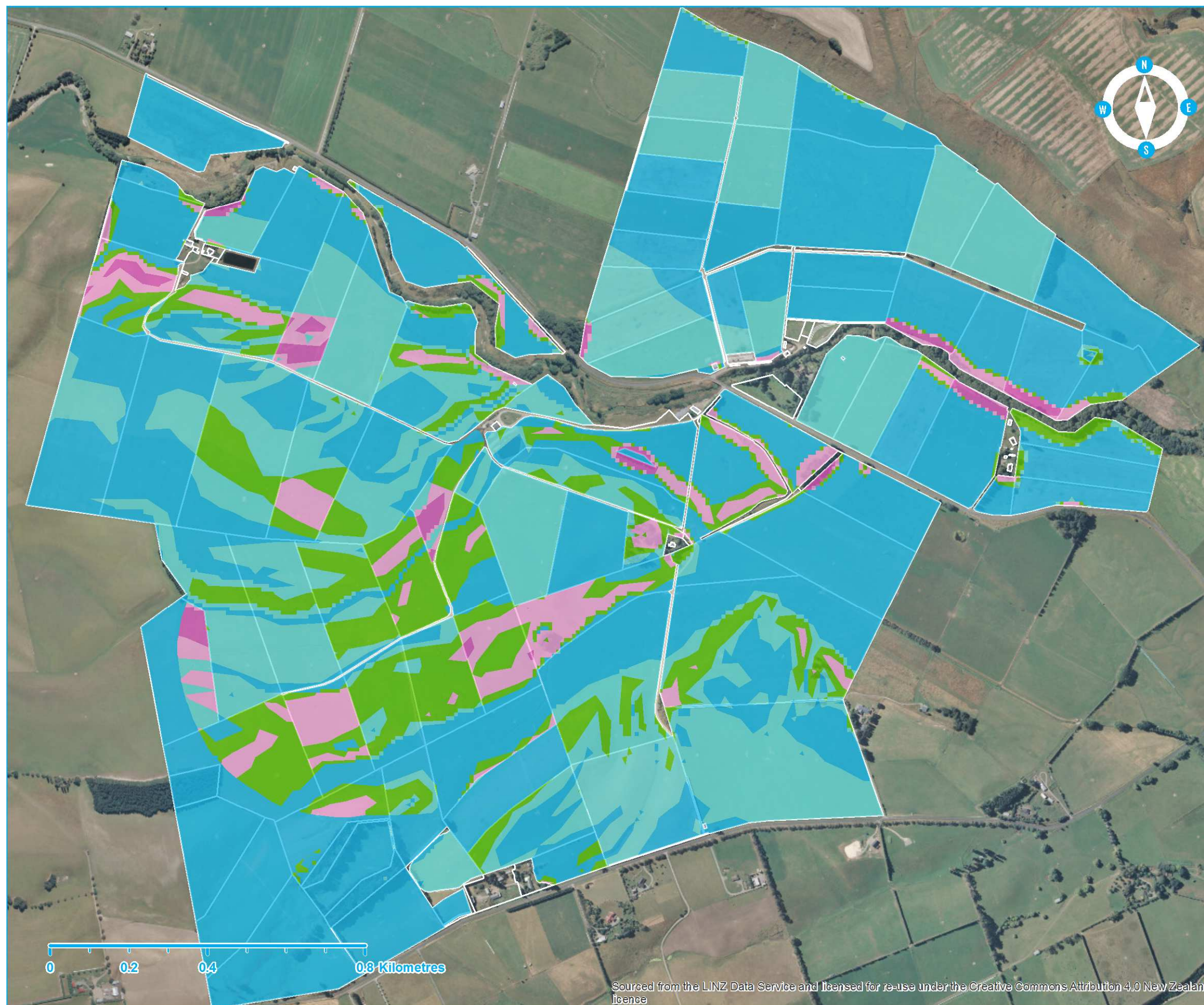
Load Loss(kg/ha/yr)



Definition - Natural breaks groups similar values and best maximizes the differences between classes.

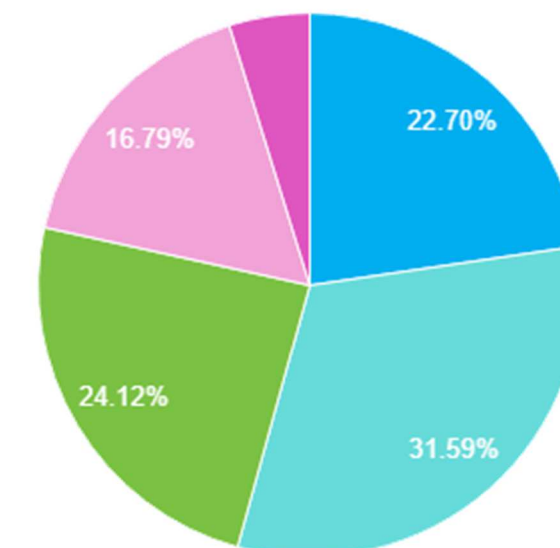
Total loss (kg/yr)	Total loss rate (kg/ha/yr)
15,231.00	39.07

- The high nitrogen (N) risk areas on farm are illustrated by the pink areas on the map. The high N risk area on farm contributes to 28.1% of the total N load. The high N risk ranges from 46.8 kg N/ha/yr – 174.6 kg N/ha/yr.
- The medium risk areas on farm are illustrated by the green area on the map. The medium risk area on farm contributes to 28.9% of the total N load.
- The low N risk areas on farm are illustrated by the light and darker blue areas. The low N risk area on farm contributes to 43.0% of the total N load. The low N risk ranges from 2.4 kg N/ha/yr – 35.7 kg N/ha/yr.



Risk map Classification: Natural breaks

Load Loss(kg/ha/yr)

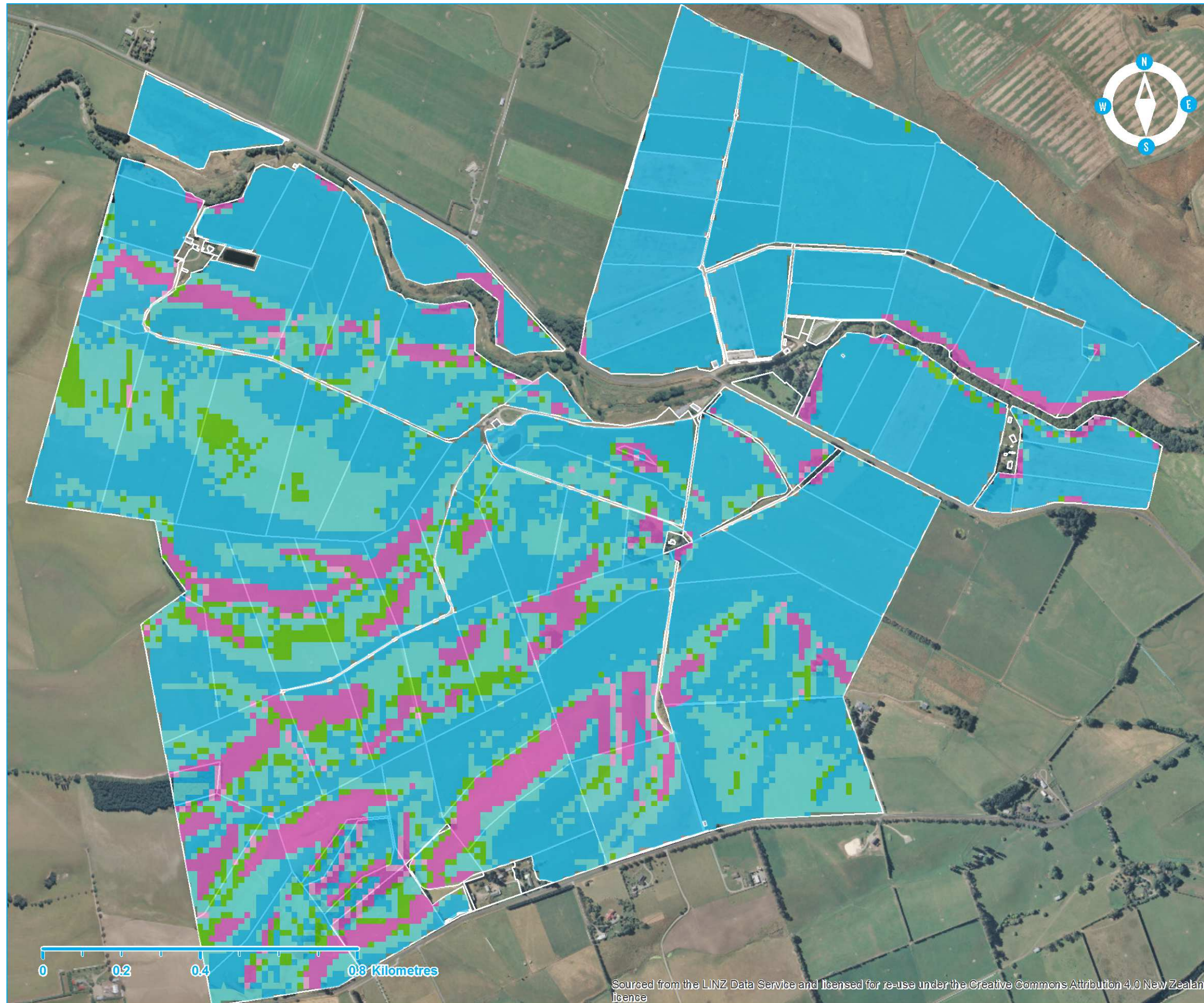


0.01702 - 0.4954 (22.70%) 0.4954 - 1.018 (31.59%)
1.018 - 1.635 (24.12%) 1.635 - 2.392 (16.79%)
2.392 - 4.073 (4.79%)

Definition - Natural breaks groups similar values and best maximizes the differences between classes.

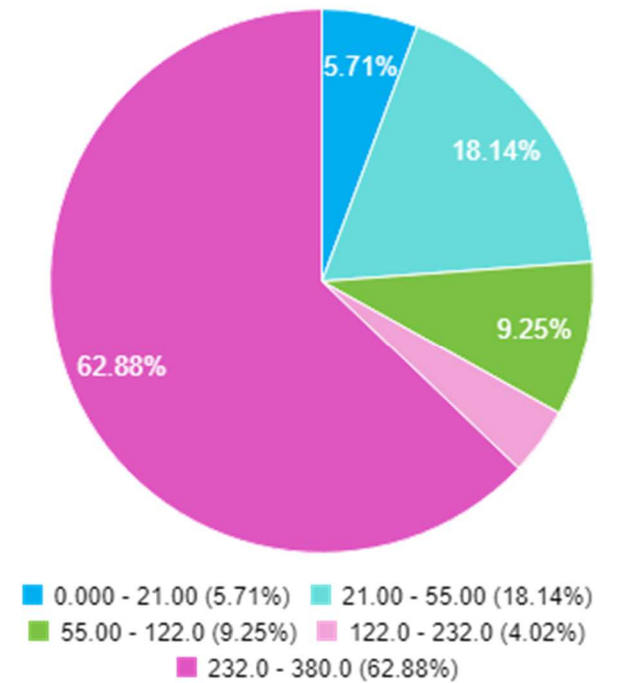
Total loss (kg/yr)	Total loss rate (kg/ha/yr)
245.18	0.63

- The high phosphorous (P) risk areas on farm are illustrated by the pink area on the map. The high P risk area on farm contributes to 21.6% of the total P load. The high P risk ranges from 1.64 kg P/ha/yr – 4.07 kg P/ha/yr
- The medium risk areas on farm are illustrated by the green area on the map. The medium risk area on farm contributes to 24.12% of the total P load.
- The low P risk areas on farm are illustrated by the light and darker blue areas. The low P risk area on farm contributes to 54.3% of the total P load. The low P risk ranges from 0.02 kg P/ha/yr – 1.02 kg P/ha/yr.



Risk map Classification: Natural breaks

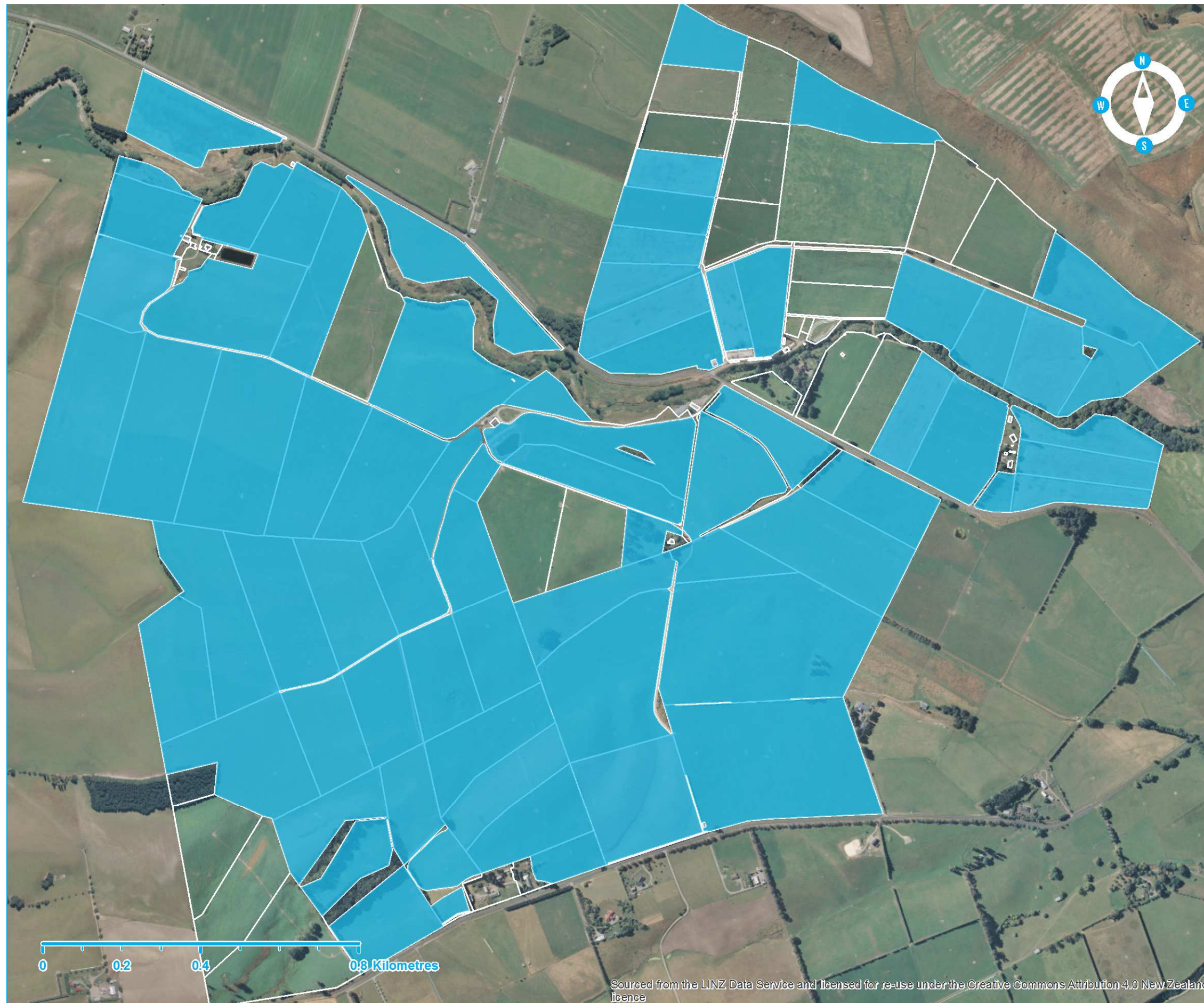
Load Loss(kg/ha/yr)



Definition - Natural breaks groups similar values and best maximizes the differences between classes.

Total loss (kg/yr)	Total loss rate (kg/ha/yr)
15,972.60	40.97

- The high sediment risk areas on farm are illustrated by the pink area on the map. The high sediment risk area on farm contributes to 66.9% of the total sediment load. The high sediment risk ranges from 122 kg/ha/yr – 380 kg/ha/yr.
- The medium risk areas on farm are illustrated by the green area on the map. The medium risk area on farm contributes to 9.25% of the total sediment load.
- The low sediment risk areas on farm are illustrated by the light and darker blue areas. The low sediment risk area on farm contributes to 23.9% of the total sediment load. The low sediment risk ranges from 0 kg /ha/yr – 55 kg /ha/yr.



- The *E. coli* risk across the whole farm is 'Low Risk'
- The *E. coli* risk is reported for pastoral blocks only, however grazed crop paddocks may present a risk if there is surface runoff to waterways or if stock have direct access to waterways.