

Draft:

Long Term Plan 2021-31

Climate Change Strategy

Networking for the Environment Group

12 March 2021



WHAT'S THE
RIGHT
GAME PLAN?



X



What's being proposed in the LTP?

\$13 billion budget over 10 years.

\$1.2 billion on core spending on infrastructure and facilities over the first three years.

\$5.6 billion over next 10 years on day-to-day services.

\$52 million operational savings over the next three years.

5 per cent (\$2.74 a week) – average residential rates increase.

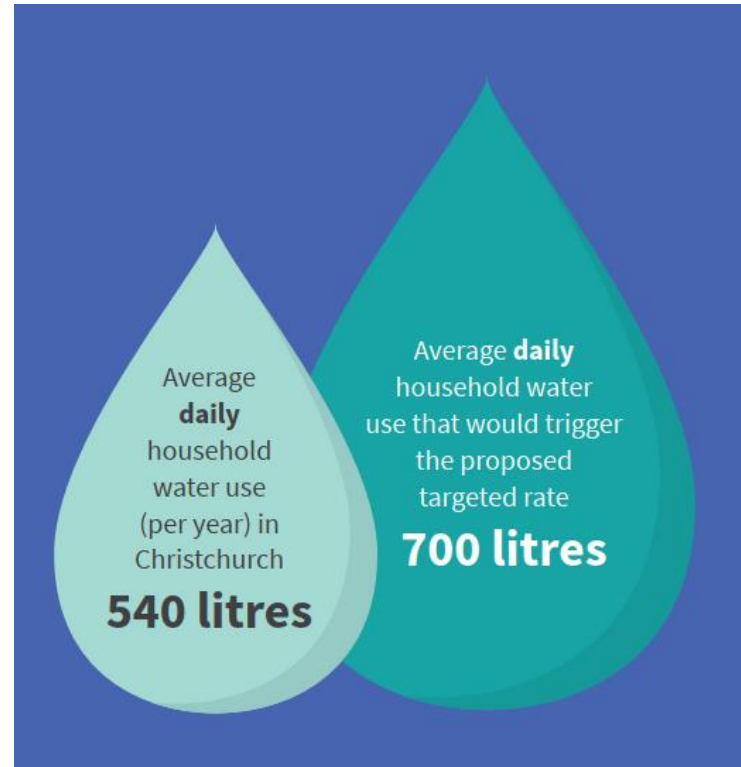
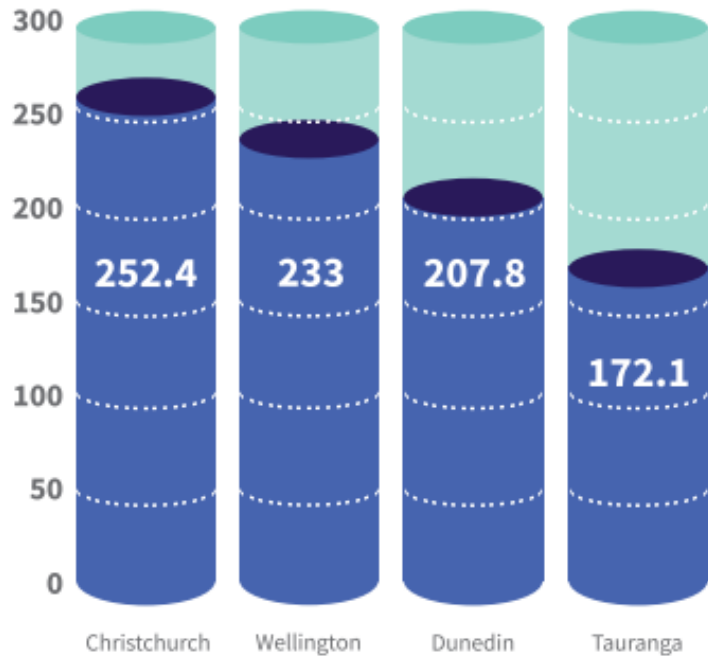




Excess water use targeted rate

We're proposing to introduce an excess water use targeted rate for properties that use more than 700 litres per day.

Average water use
Litres per person per day



Did you know?

The top 20 per cent of household water users in Christchurch use 50 per cent of the total residential water supplied to the city.

Changes to how we rate properties

- Heritage targeted rate – itemises contributions to heritage buildings.
- Arts Centre Te Matatiki Toi Ora targeted rate.
- Land drainage targeted rate.
- Update to rates remission policy.



Ōtākaro Avon River Corridor

- \$316 million for implementing the Ōtākaro Avon River Corridor Regeneration Plan.
- \$21 million to support future plans for Brooklands, Southshore and the Port Hills.



Draft Climate Strategy

Have your say

Draft Ōtautahi Christchurch Climate Change Strategy

Consultation open Friday 12 March
until Sunday 25 April, 2021

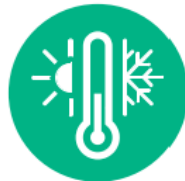
ccc.govt.nz/haveyoursay

Christchurch
City Council

Our climate goals



Net Zero Emission Christchurch



We understand and are prepared for
the ongoing impacts of climate change

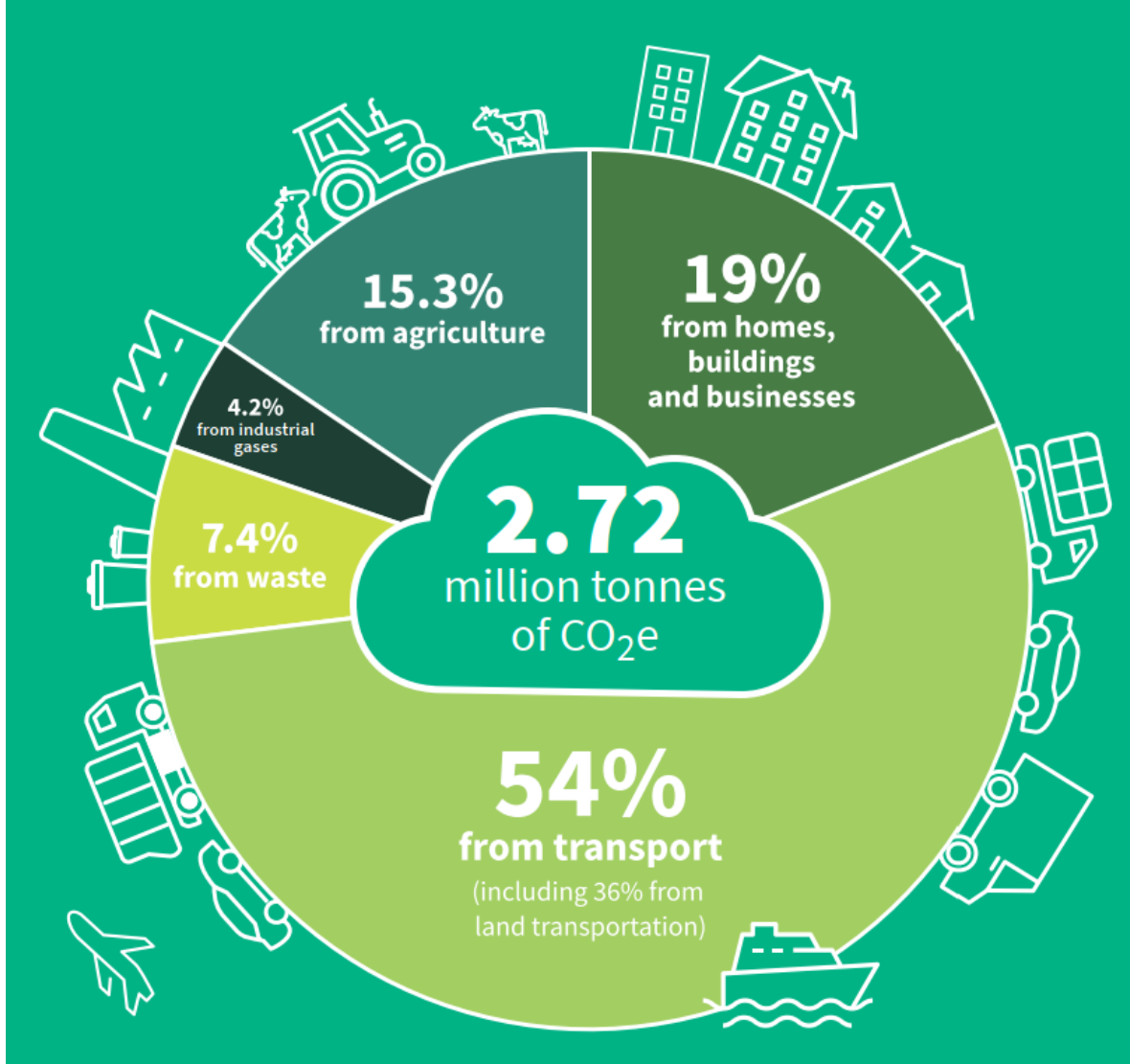


We have a just transition to an
innovative low-emission economy



We are guardians of our natural
environment and taonga

Emissions and targets for Christchurch



Christchurch District targets:

Carbon neutral by 2045
and 50% less by 2030

At least a 50% less methane by 2045
and 25% by 2030

From our 2016/2017 base line

Council target:

Carbon neutral by 2030

Climate Programmes

Building the foundation
- partnerships and
resourcing **1**



Proactive climate
planning with
communities **3**



Carbon removal and
natural restoration **5**



Low-emission
transport system **7**



Towards
zero waste **9**



2 Understanding
the local effects of
climate change



4 Adapting and
greening
infrastructure



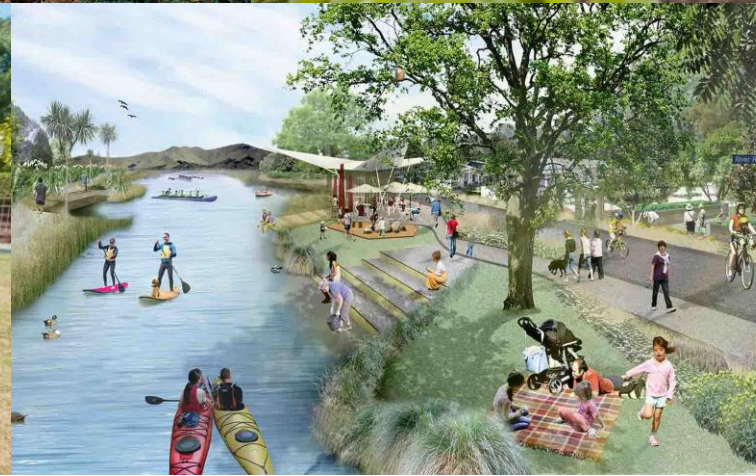
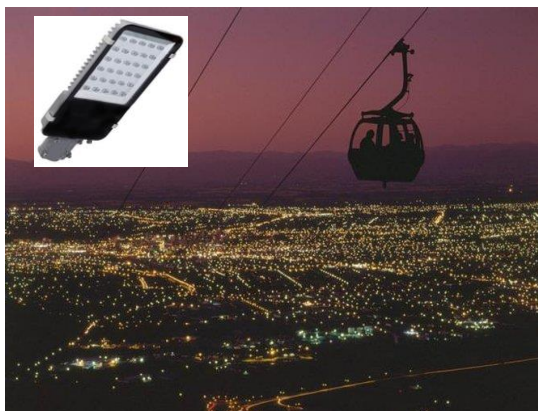
6 Economic
transformation
and innovation



8 Energy efficient
homes and
buildings



10 Sustainable
food system



Sustainability Fund open until 26 April



Relevance

Alignment with climate objectives

Benefit

The nature and scale of public good

Legacy

Ability to deliver ongoing benefits

Deliverable

The project is ready and able to be delivered

Measurable

Has clear measures of success

www.ccc.govt.nz/sustainabilityfund

Have your say before:

Long Term Plan – Sunday 18 April

Climate Change Strategy – Sunday 25 April



Introducing the LTP Tool

Any questions?

